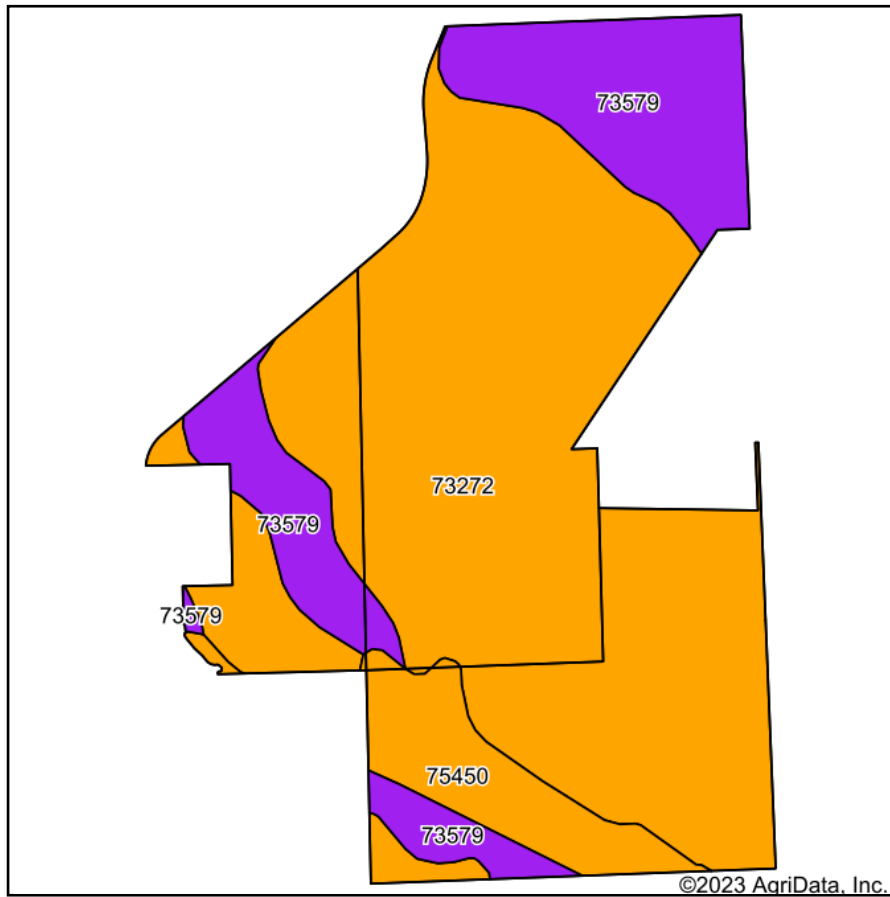
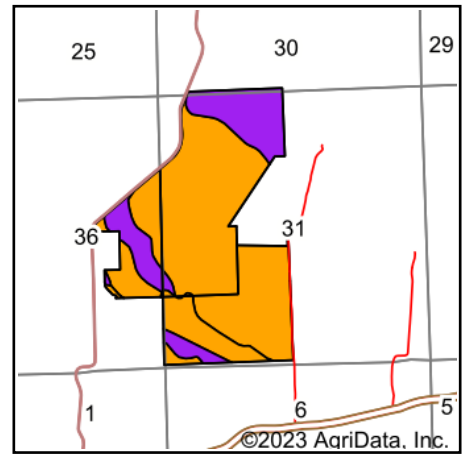


Soils Map



Soils data provided by USDA and NRCS.



State: **Missouri**
 County: **Ste. Genevieve**
 Location: **31-35N-8E**
 Township: **Saline**
 Acres: **308.14**
 Date: **11/21/2023**

Maps Provided By:

 CUSTOMIZED ONLINE MAPPING
 © AgriData, Inc. 2023 www.AgriDataInc.com



Area Symbol: MO186, Soil Area Version: 4

Code	Soil Description	Acres	Percent of field	Non-Irr Class Legend	Non-Irr Class *c	Alfalfa hay Tons	Caucasian bluestem Tons	Common bermudagrass Tons	Orchardgrass red clover Tons	Tall fescue Tons	Warm season grasses Tons	*n NCCPI Overall	*n NCCPI Corn	*n NCCPI Small Grains	*n NCCPI Soybeans
73272	Hildebrecht silt loam, 3 to 8 percent slopes	217.61	70.6%		IIIw	3	6	4	5	5	6	51	51	47	
73579	Wilderness gravelly silt loam, 15 to 30 percent slopes	65.64	21.3%		VIIs	2	4	2	2	2	4	34	34	18	
75450	Bloomsdale silt loam, 0 to 3 percent slopes, frequently flooded	24.89	8.1%		IIIw	2	4	3	2	3	4	74	73	62	
Weighted Average					3.64	2.7	5.4	3.5	4.1	4.2	5.4	*n 49.2	*n 49.2	*n 42	*n 42

*n: The aggregation method is "Weighted Average using all components"

*c: Using Capabilities Class Dominant Condition Aggregation Method

Soils data provided by USDA and NRCS.