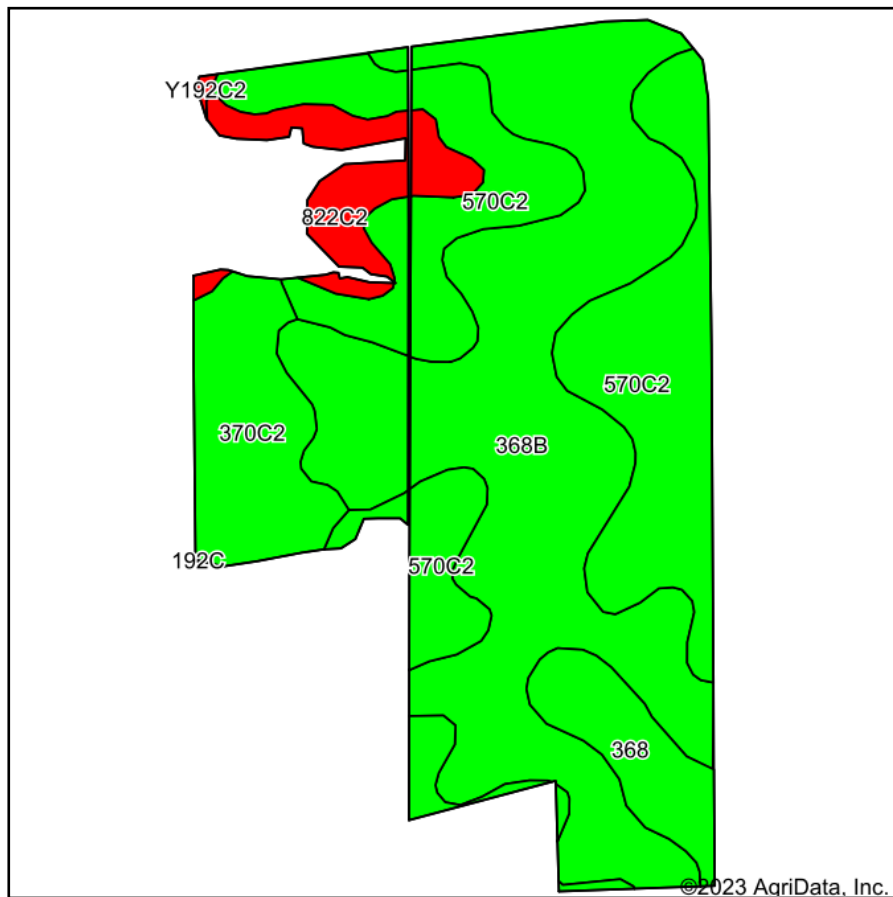
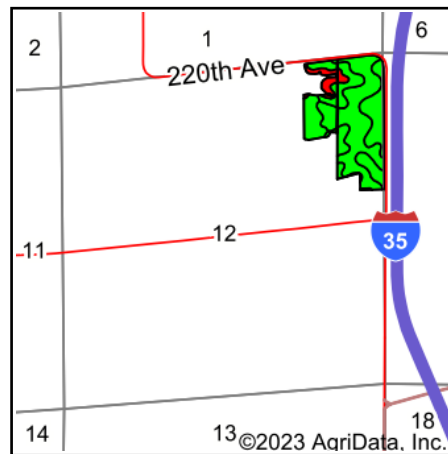


Soils Map



Soils data provided by USDA and NRCS.



State: **Iowa**
 County: **Clarke**
 Location: **12-73N-26W**
 Township: **Washington**
 Acres: **46.72**
 Date: **12/8/2023**

PC PEOPLES
 COMPANY
 INTEGRATED LAND SOLUTIONS

Maps Provided By:

surety
 CUSTOMIZED ONLINE MAPPING
 © AgriData, Inc. 2023 www.AgriDataInc.com



Area Symbol: IA039, Soil Area Version: 29

| Code | Soil Description | Acres | Percent of field | CSR2 Legend | Non-Irr Class *c | CSR2** | CSR | *n NCCPI Overall | *n NCCPI Corn | *n NCCPI Small Grains | *n NCCPI Soybeans |
|------------------|---|-------|------------------|-------------|------------------|--------|-----|------------------|---------------|-----------------------|-------------------|
| 368B | Macksburg silty clay loam, 2 to 5 percent slopes | 21.67 | 46.4% | | Ile | 89 | 90 | 87 | 87 | 79 | 78 |
| 570C2 | Nira silty clay loam, dissected till plain, 5 to 9 percent slopes, eroded | 15.22 | 32.6% | | IIle | 81 | 64 | 84 | 84 | 69 | 69 |
| 370C2 | Sharpsburg silty clay loam, 5 to 9 percent slopes, eroded | 4.44 | 9.5% | | IIle | 80 | 67 | 82 | 82 | 68 | 66 |
| 822C2 | Lamoni clay loam, 5 to 9 percent slopes, eroded | 2.79 | 6.0% | | IIle | 31 | 30 | 59 | 59 | 53 | 47 |
| 368 | Macksburg silty clay loam, 0 to 2 percent slopes | 2.54 | 5.4% | | Iw | 93 | 95 | 87 | 87 | 79 | 79 |
| Y192C2 | Adair clay loam, dissected till plain, 5 to 9 percent slopes, eroded | 0.06 | 0.1% | | IIle | 33 | | 63 | 63 | 56 | 46 |
| Weighted Average | | | | | 2.43 | 82.2 | *- | *n 83.8 | *n 83.8 | *n 73.1 | *n 72.1 |

**IA has updated the CSR values for each county to CSR2.

*- CSR weighted average cannot be calculated on the current soils data, use prior data version for csr values.

*n: The aggregation method is "Weighted Average using all components"

*c: Using Capabilities Class Dominant Condition Aggregation Method

Soils data provided by USDA and NRCS.