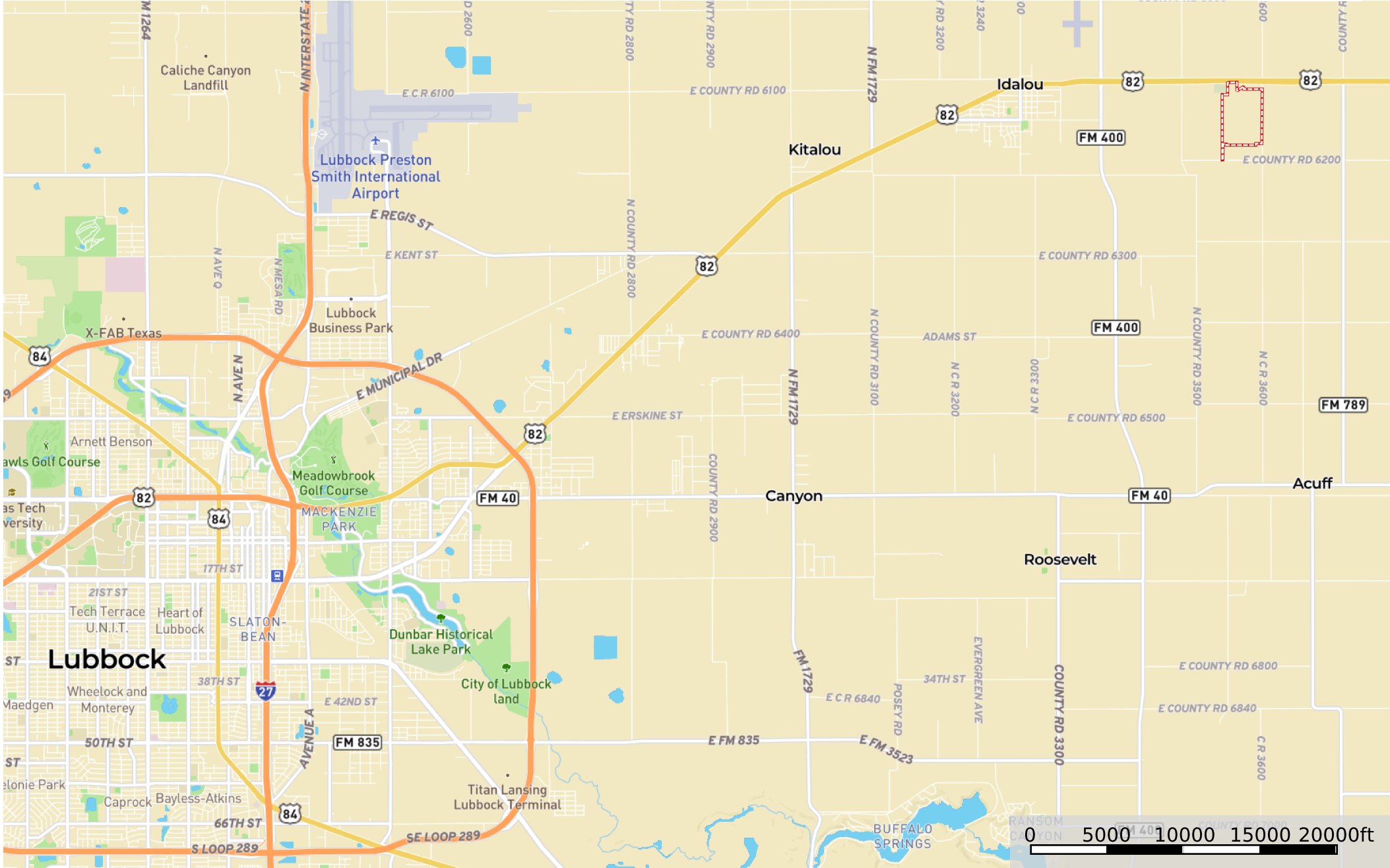
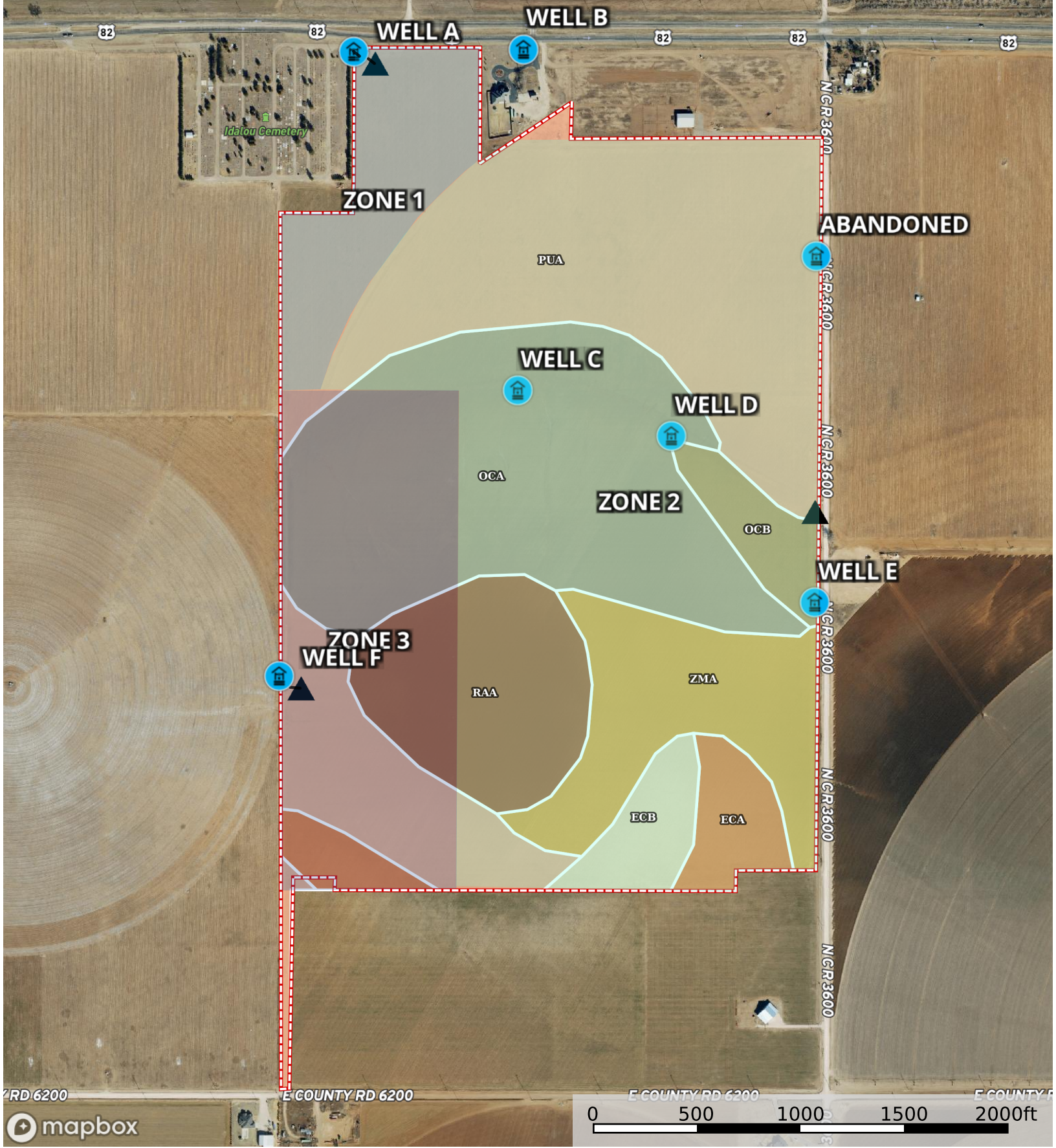


- Triangle
- Well
- Drip 1
- Drip
- Drip 1
- Boundary

Lubbock 27 - Stone Farm
Lubbock County, Texas, 222.7 AC +/-



Boundary



- Triangle
- Well
- Drip 1
- Drip
- Drip 1
- Boundary

Boundary 221.18 ac

SOIL CODE	SOIL DESCRIPTION	ACRES	%	CPI	NCCPI	CAP
PuA	Pullman clay loam, 0 to 1 percent slopes	94.08	42.54	0	45	3s
OcA	Olton clay loam, 0 to 1 percent slopes	59.03	26.69	0	46	2c
ZmA	Zita loam, 0 to 1 percent slopes	22.92	10.36	0	42	3e
RaA	Randall clay, 0 to 1 percent slopes, occasionally ponded	22.57	10.2	0	17	6w
EcA	Estacado clay loam, 0 to 1 percent slopes	9.87	4.46	0	47	2c
EcB	Estacado clay loam, 1 to 3 percent slopes	6.51	2.94	0	48	2e
OcB	Olton clay loam, 1 to 3 percent slopes	6.2	2.8	0	45	2e
TOTALS		221.18(*)	100%	-	42.28	2.94

(*) Total acres may differ in the second decimal compared to the sum of each acreage soil. This is due to a round error because we only show the acres of each soil with two decimal.

Capability Legend

Increased Limitations and Hazards

Decreased Adaptability and Freedom of Choice Users

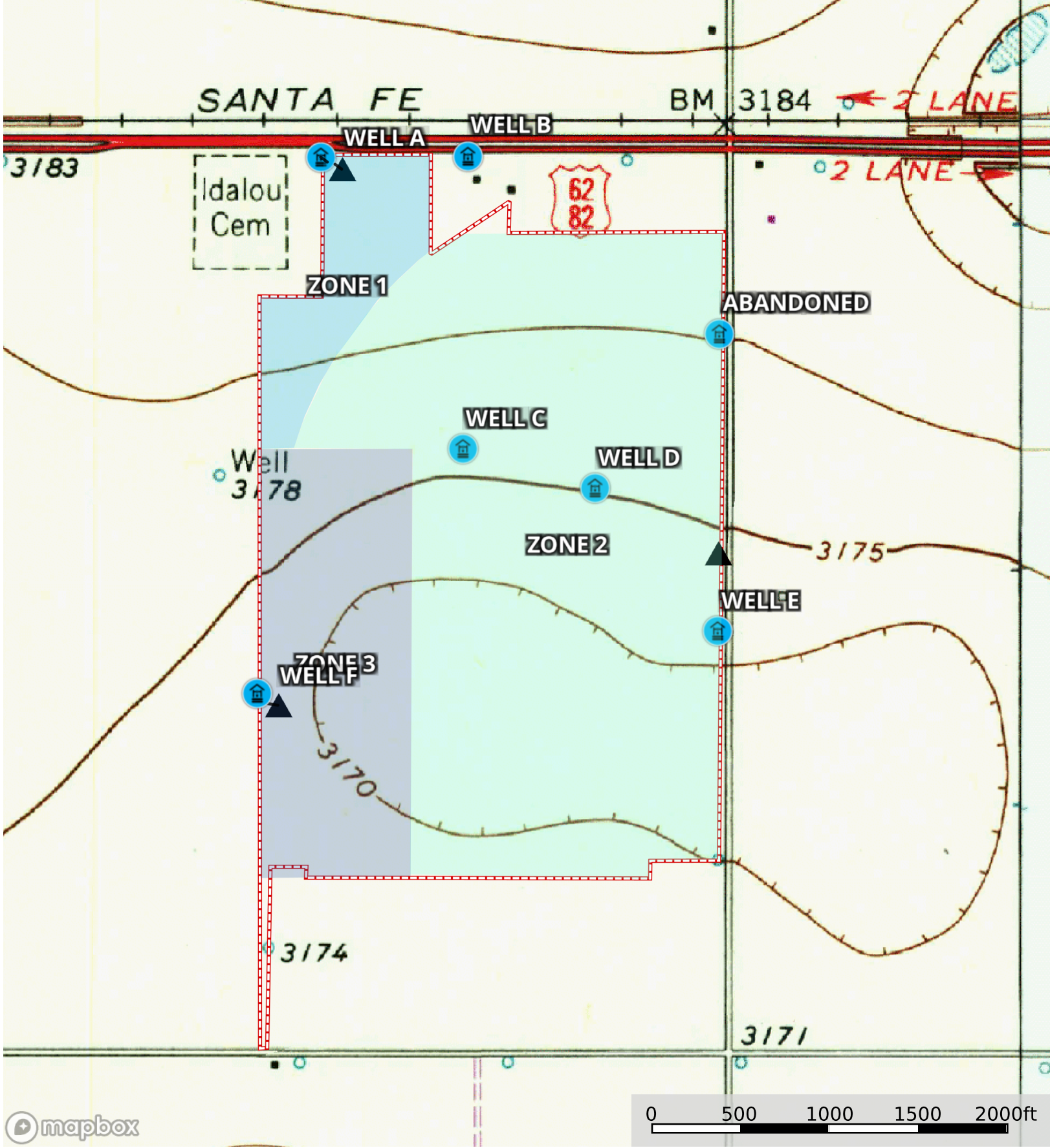
Land, Capability

	1	2	3	4	5	6	7	8
'Wild Life'	•	•	•	•	•	•	•	•
Forestry	•	•	•	•	•	•	•	
Limited	•	•	•	•	•	•	•	
Moderate	•	•	•	•	•	•		
Intense	•	•	•	•	•			
Limited	•	•	•	•				
Moderate	•	•	•					
Intense	•	•						
Very Intense	•							

Grazing Cultivation

(c) climatic limitations (e) susceptibility to erosion

(s) soil limitations within the rooting zone (w) excess of water



Triangle Well Drip 1 Drip 1 Boundary