



Monroe County Highly Tillable Row Crop Farm

697th Avenue, Eddyville, IA 52553

**Hawkeye Farm
Mgmt & Real Estate**

Price: \$460,000

Price/Acre: \$11,500

Acres: 40 +/-

Subject to Survey







PROPERTY DETAILS

- Nearly 100% Tillable
- 80.4 CSR2
- Ladoga & Taintor Predominate Soils
- Full Possession at Closing for Spring Planting
- Located 1.5 Miles North of Highway 137
- Annual Taxes \$948 Estimated

CONTACT US



**Hawkeye
Farm Mgmt &
Real Estate**

 (641) 932-7796
 Hawkeye@UClowa.com
 www.UClowa.com
 1010 S Clinton
Albia, IA 52531



RYAN AMMONS

(641) 777- 2955

Ryan@UClowa.com



NATE AMMONS

(641) 777-2861

Nate@UClowa.com



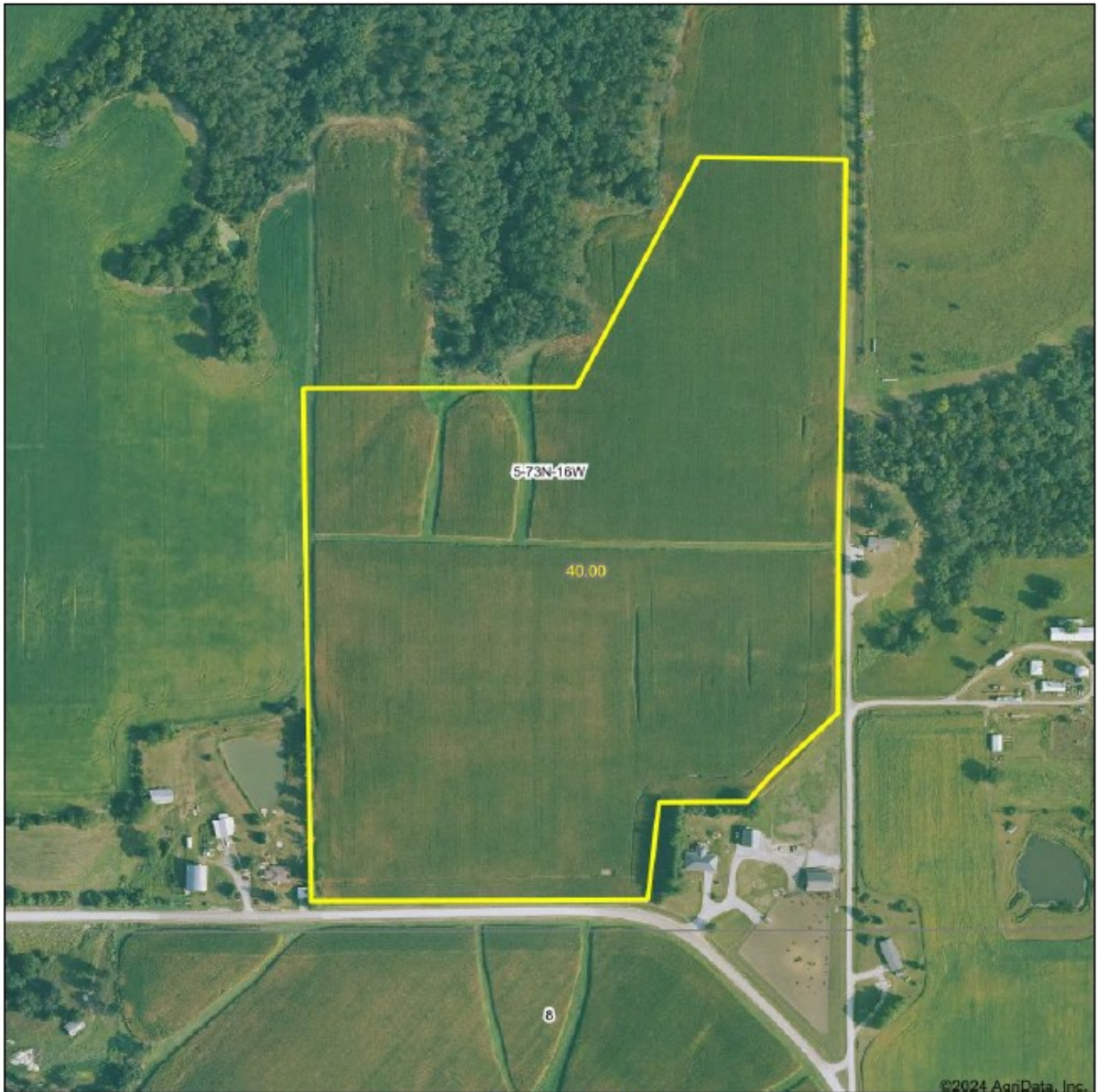
Alan Ammons, Broker, Licensed in Iowa & Missouri. All Agents Licensed in Iowa. The above information, although believed to be accurate, is not warranted or guaranteed by the owner, listing firm, or listing agent.

PROPERTY MAP



**Hawkeye
Farm Mgmt &
Real Estate**

Aerial Map



©2024 AgriData, Inc.

Hawkeye Farm Mgmt & Real Estate



Boundary Center: 41° 8' 59.62, -92° 43' 27.03

0ft 377ft 755ft

**5-73N-16W
Monroe County
Iowa**



Maps Provided By:
surety
CUSTOMER ONLINE MAPPING
© AgriData, Inc. 2023 www.AgridataInc.com

1/29/2024