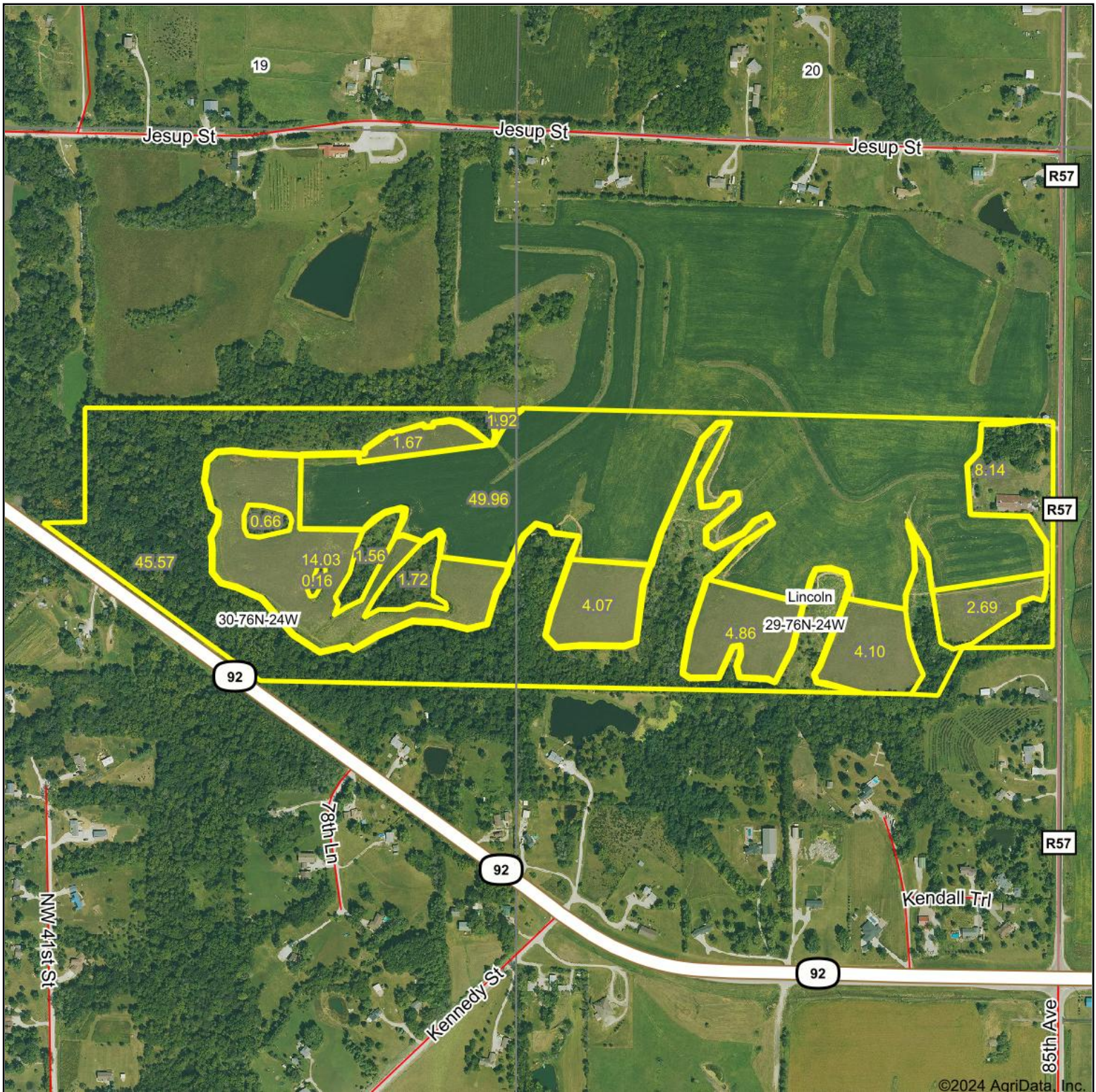


Aerial Map



Boundary Center: 41° 21' 39.67, -93° 39' 15.16

0ft 754ft 1508ft

29-76N-24W
Warren County
Iowa



Maps Provided By:
 **surety**
CUSTOMIZED ONLINE MAPPING
© AgriData, Inc. 2023 www.AgriDataInc.com

1/29/2024