

HERNANDO HOMESITE

6069 N TRAM RD
HERNANDO, FL 34442

Zane Mueller
C: 352.303.9322
zane.mueller@svn.com





Sale Price **\$415,000**

OFFERING SUMMARY

Acreage: **40± Acres**
Price / Acre: \$10,375
City: Hernando
County: Citrus
Property Type: Timberland

PROPERTY OVERVIEW

This 40-acre property in Hernando, Florida, boasts 100% uplands, densely wooded areas, and existing winding riding trails. Located 12 miles from Downtown Inverness and less than 10 minutes from the town of Hernando, Florida, this tract is a prime rural homesite opportunity.

Less than two miles away, it provides convenient access to the Withlacoochee State Forest 2 Mile Prairie Tract, featuring an 8.3-mile horse trail across 2,896 acres. This is an ideal location for equestrian and motocross enthusiasts or those seeking a serene homesite with immediate access to extensive natural trails. Additionally, this central location is perfectly positioned to explore the Nature Coast, whether its world-class flats fishing in Crystal River or diving with Manatees, the saltwater is less than a 30 minute drive away.

Specifications & Features



SPECIFICATIONS & FEATURES

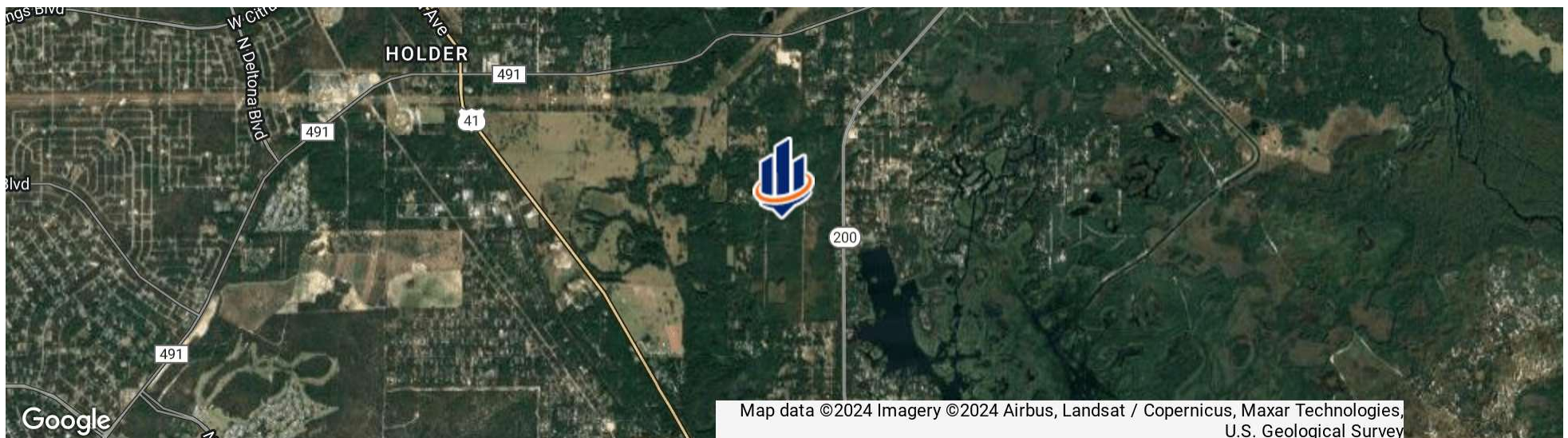
Land Types:	<ul style="list-style-type: none">• Timberland• Transitional
Uplands / Wetlands:	100% Uplands
Taxes & Tax Year:	2023 - \$3,394.62
Zoning / FLU:	LDRMH
Water Source & Utilities:	Electricity is available, no improvements on property
Nearest Point of Interest:	Inverness, Florida
Current Use:	Vacant

Location



LOCATION & DRIVING DIRECTIONS

Parcel:	19E18S02 34000
GPS:	28.951715, -82.383871
Driving Directions:	Heading East from Holder, Turn Right onto N Tram Rd, The property is on the left when the road dead-ends
Showing Instructions:	Call 352-303-9322



Two Mile Prairie



THE TWO MILE PRAIRIE'S HISTORY

This property lies along the southern bank of the Withlacoochee River at the northern end of the Tsala Apopka Lake system. The Withlacoochee River is designated as an Outstanding Florida Water, which makes the river highly suitable for recreation, fishing and wildlife. This location on the river is very attractive to recreation users seeking to experience a serene canoe ride or pleasurable hike along the riverbank. Purchased jointly by the state of Florida and the District, one of the primary purposes for acquisition of the property is its ability to provide significant water recharge and natural flood control.

The Bearhead Hammock horse trail is an 8.3 mile loop with two wet weather bypass routes. In addition to the camping area at the trailhead, there are additional equestrian campsites located along the trail. The Johnson Pond loop hiking trail, with a trailhead along the south side of State Road 39, is approximately 2.6 miles in length. The Oxbow hiking trail is a 3/4 mile loop that winds from State Road 39 to the Withlacoochee River, and provides access to the primitive river campsites.



2,896 ACRES OF ACTIVITIES

Horse Riding

Approximately 8.3 miles of marked trails

Hiking and Biking

Approximately 15 miles of marked trails, including mountain bike trails

Fishing and Canoeing

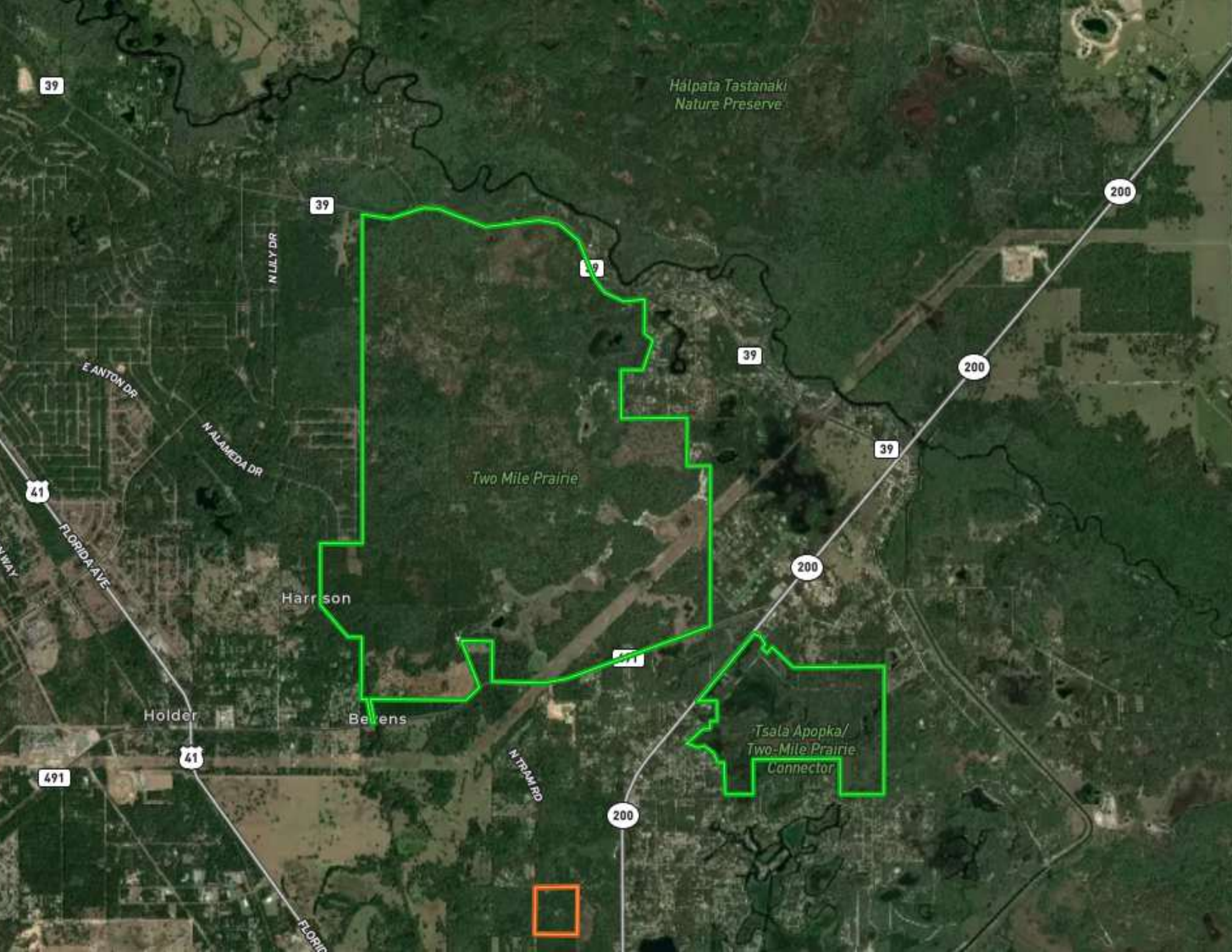
Along miles of the Withlacoochee River, with canoe and kayak launch areas

Camping

Access to primitive riverside and paddle-in campsites along the Withlacoochee River

For More Information and Points of Accessibility:

<https://www.swfwmd.state.fl.us/recreation/two-mile-prairie>



39

Halpata Tastanaki
Nature Preserve

39

N LILY DR

39

39

200

200

E ANTON DR

N ALAMEDA DR

41

FLORIDA AVE

Two Mile Prairie

39

200

Harrison

41

Holder

41

Belens

N TRAM RD

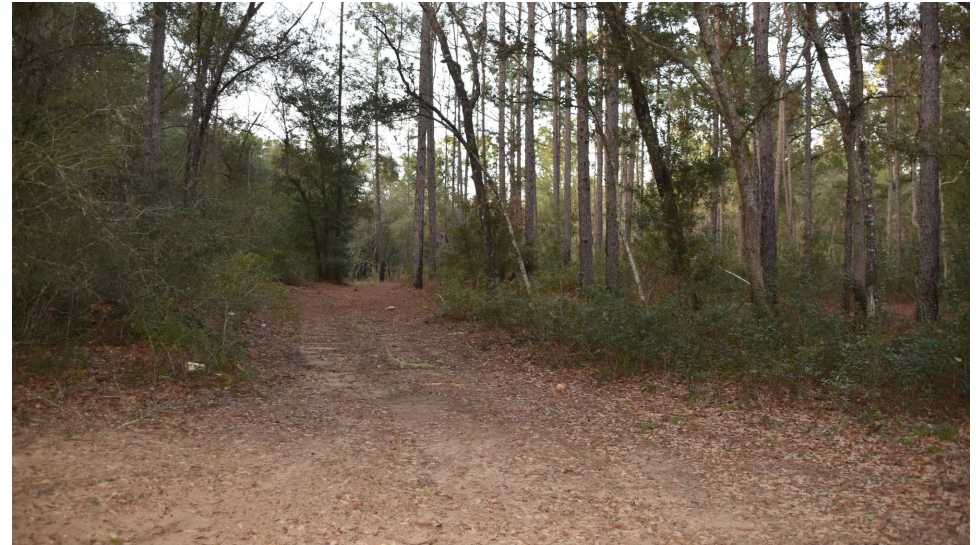
Tsala Apopka/
Two-Mile Prairie
Connector

200

491



Additional Photos





ONE OF AMERICA'S BEST BROKERAGES



One of America's
Best Brokerages



APEX 2022 Top
National Producer



Most Influential
Business Leaders



Largest Commercial
Real Estate Brokers
in Tampa Bay



Ranked 210 on Inc.
5000 Regional List



For more information visit www.SVNsaunders.com

HEADQUARTERS

1723 Bartow Rd
Lakeland, FL 33801
863.648.1528

ORLANDO

605 E Robinson Street, Suite 410
Orlando, Florida 32801
386.438.5896

NORTH FLORIDA

356 NW Lake City Avenue
Lake City, Florida 32055
352.364.0070

GEORGIA

203 E Monroe Street
Thomasville, Georgia 31792
229.299.8600

©2024 Saunders Ralston Dantzler Real Estate. All SVN® Offices Independently Owned and Operated SVN | Saunders Ralston Dantzler Real Estate is a full-service land and commercial real estate brokerage representing buyers, sellers, investors, institutions, and landowners since 1996. We are recognized nationally as an authority on all types of land, including agriculture, ranch, recreation, and residential development. Our commercial real estate services include property management, leasing and tenant representation, valuation, business brokerage, and advisory and counseling services for office, retail, industrial, and multifamily properties. Our firm also features an auction company, a forestry division, international partnerships, and extensive expertise in conservation easements. Located in Florida, Georgia, and Alabama, we provide proven leadership and collaborative expertise backed by the strength of the SVN® global platform.

