

GERBER GROVES BEST BUY!



210 GERBER ROAD, LABELLE, FL 33935

16.84 ACRES OF IMPROVED PASTURE OR FARMLAND PRICED TO SELL IMMEDIATELY AT ONLY \$11,500 PER ACRE. Land cleared, fenced and gated with two entries, one at NW corner with double 16' gates and second on Gerber Road with double 12' gated entry. Land is cleared except for scenic trees on north boundary for home site or office location. Fencing is high quality with NW entry featuring telephone pole posts and additional 4x4's painted white for a distinctive ingress and egress. Location is at the west end of Road One in Gerber Grove Section One. Gerber Groves properties benefit from being part of the Gerber Groves Water Control Drainage District with water usage and drainage in place for all Gerber Grove land owners as part of the district's South Florida Water Management District agricultural subdivision permit. Gerber Groves is located south of LaBelle and north of Felda and Immokalee in popular farming area with some agricultural offices, packing houses and homes. It is in close proximity to State Highway 29 and in a central location for moving all varieties of crops. **OWNER MOTIVATED AND READY TO SELL NOW! LET HIS RELOCATION BE YOUR BENEFIT!**

\$193,660
(\$11,500 p/Ac)



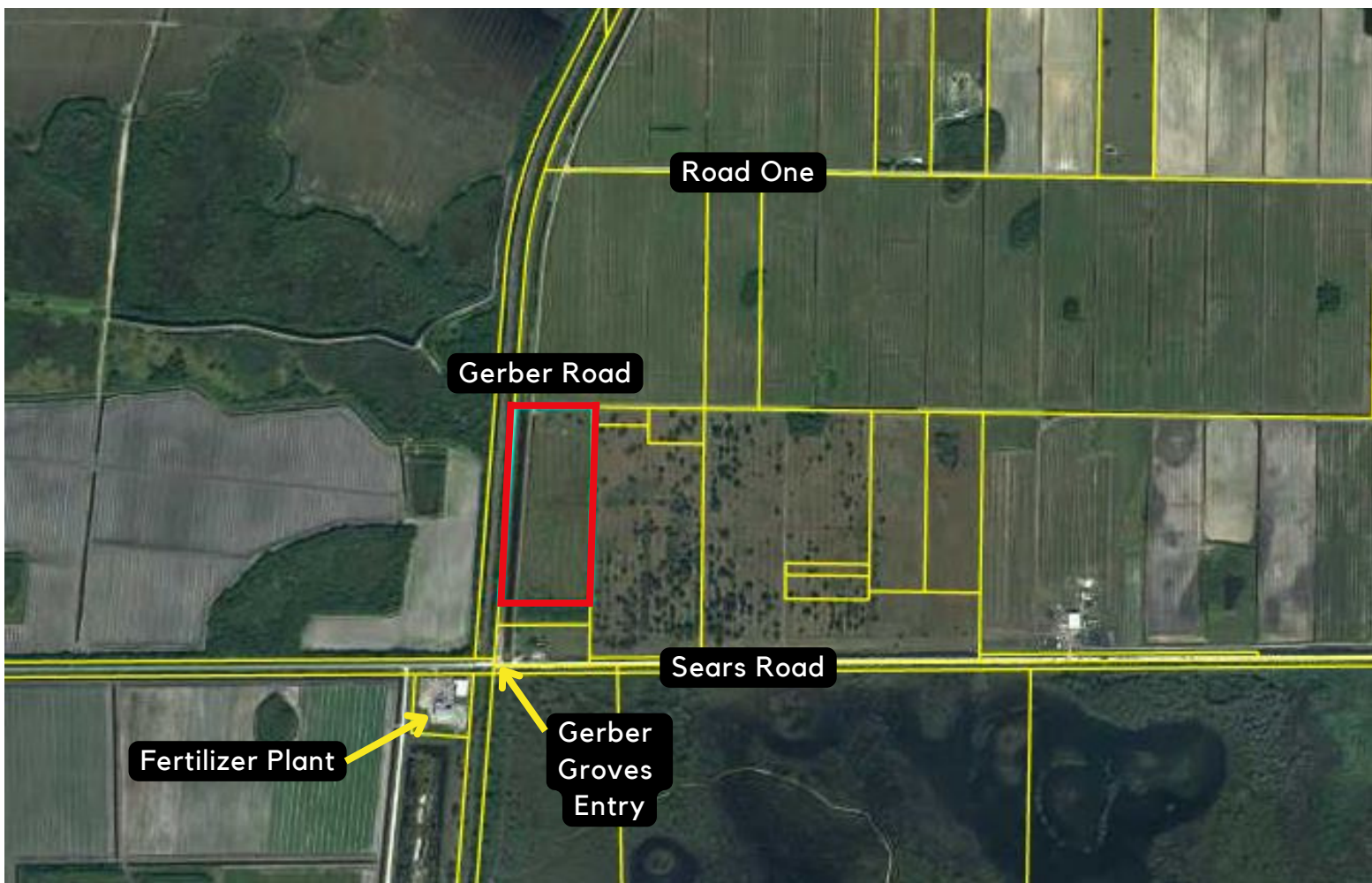
**180 N Bridge Street,
LaBelle, FL 33935**

863-675-4500
www.soland.com

SHERRI DENNING
Broker/Owner

REPRESENTED BY:
863-673-0829
Sherri@soland.com

KC LYNN 239-634-6525
Realtor KC@soland.com



- Hendry County ID #s: 1-30-44-04-010-0001-009.5
- 16.84 Total Acre, M/L
- Approx. 540' x 1,290'
- Zoned A-2 (Agricultural)
- 2023 Taxes: \$3,916.07 (No Ag Exemption + Barron WCD Tax)
- Electric Available; Barron Water for Water & Drainage

