

# Development Opportunity in Washington County, MS

\$450,000



Take a look at this 10.69± acre development tract centrally located in Greenville, MS. Just east of the subject is St. Joseph School, to the west is the Hampton Inn, to the rear of the property is the Greenville Country Club Golf Course. The tract is zoned C-4 (commercial). This is an excellent location for condos, apartments, or a small business with utility services near the property. There is 457± ft of frontage on VFW Road, 947± ft depth on the east, and 920± ft depth on the west. Give Tracey Bell a call to schedule your private showing!



**TRACEY  
BELL**

MANAGING BROKER

Office: 662.441.2500

Cell: 662.719.4720

[Tracey@TomSmithLand.com](mailto:Tracey@TomSmithLand.com)



## A Real Estate Expert You Can Trust

[TomSmithLandandHomes.com](http://TomSmithLandandHomes.com)

Information is believed to be accurate but not guaranteed.







## TRACEY **BELL**

MANAGING BROKER

Office: 662.441.2500

Cell: 662.719.4720

[Tracey@TomSmithLand.com](mailto:Tracey@TomSmithLand.com)



**A Real Estate Expert You Can Trust**  
[TomSmithLandandHomes.com](http://TomSmithLandandHomes.com)

Information is believed to be accurate but not guaranteed.





# AERIAL MAP



[Click for Interactive Map](#)

TRACEY  
**BELL**

MANAGING BROKER

Office: 662.441.2500

Cell: 662.719.4720

Tracey@TomSmithLand.com

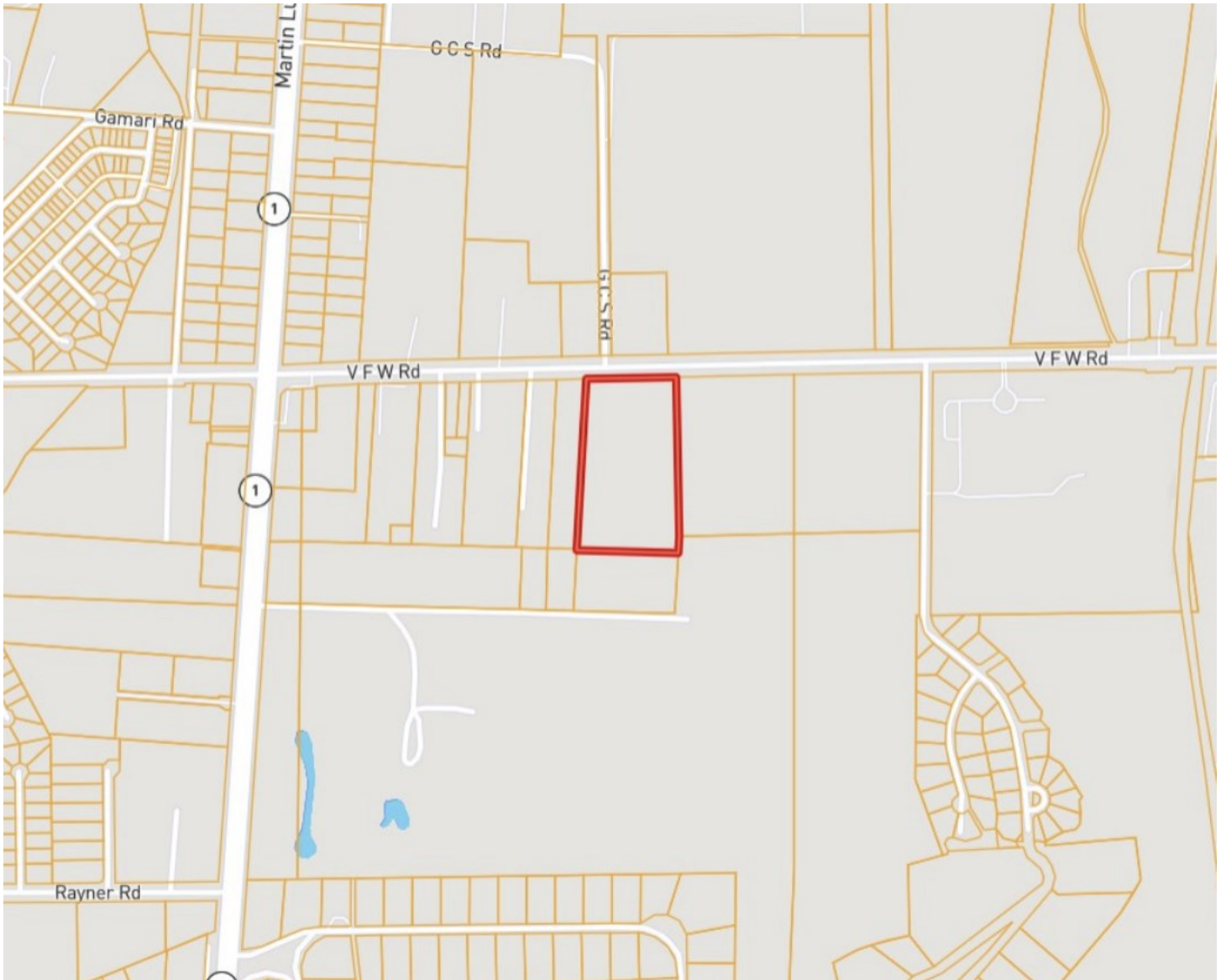


**A Real Estate Expert You Can Trust**  
TomSmithLandandHomes.com

Information is believed to be accurate but not guaranteed.



# OWNERSHIP MAP



**TRACEY  
BELL**

MANAGING BROKER

Office: 662.441.2500

Cell: 662.719.4720

Tracey@TomSmithLand.com



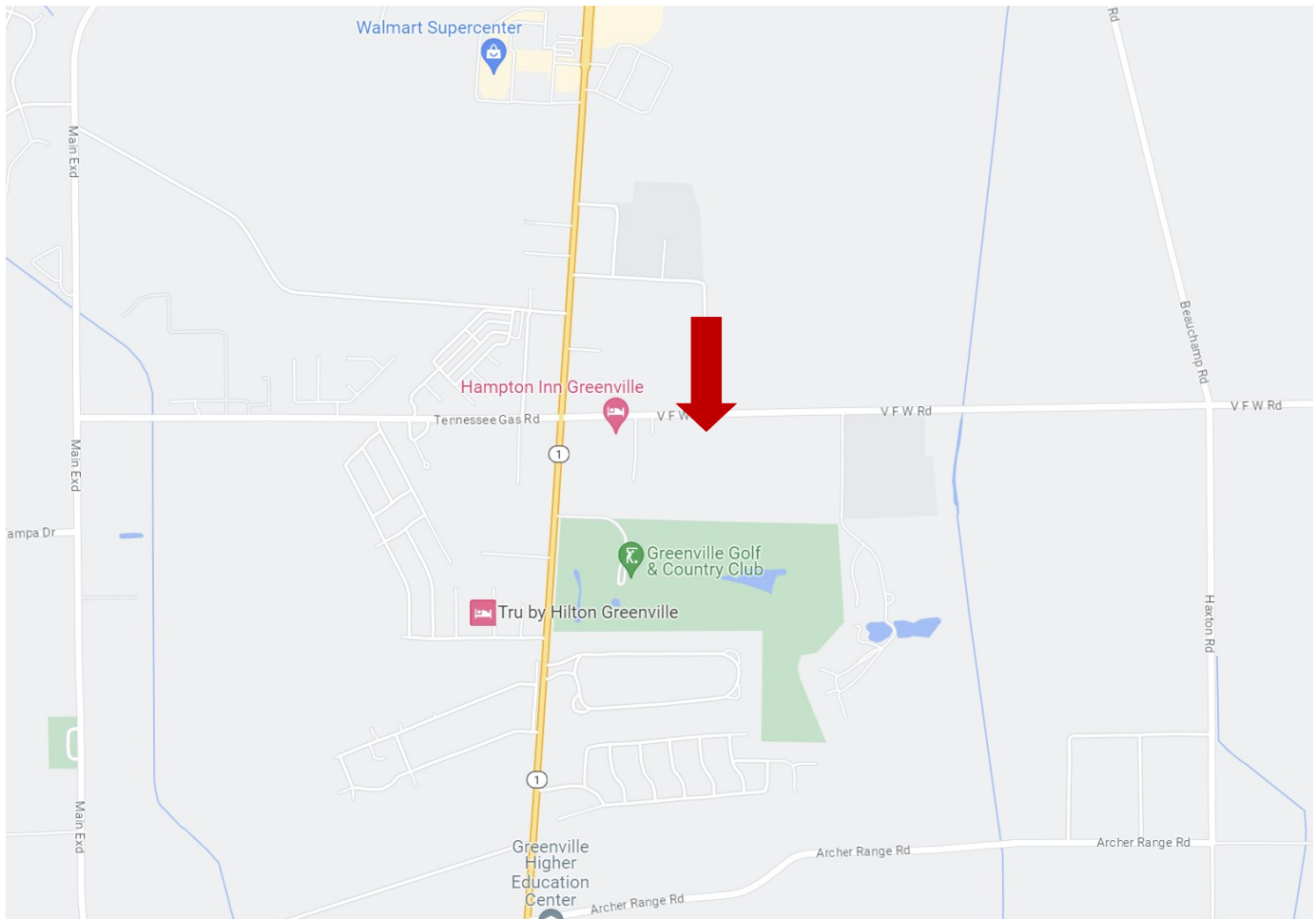
**A Real Estate Expert You Can Trust**  
TomSmithLandandHomes.com

Information is believed to be accurate but not guaranteed.





# DIRECTIONAL MAP



**Address: 1250 VFW Road, Greenville, MS 38701**

**Directions from Greenville, MS:** Travel west on Hwy 82 towards Martin Luther King Jr Blvd for approximately 3 miles, turn left onto VFW Road, continue for .4 miles and the destination will be on the left. **[Google Maps Link.](#)**



**TRACEY  
BELL**

MANAGING BROKER

Office: 662.441.2500

Cell: 662.719.4720

[Tracey@TomSmithLand.com](mailto:Tracey@TomSmithLand.com)



**A Real Estate Expert You Can Trust**

[TomSmithLandandHomes.com](http://TomSmithLandandHomes.com)

Information is believed to be accurate but not guaranteed.

