

**1.8± Acre Lot**  
**Greenwood, MS**  
**\$115,000**



**SMALLTOWN**  
HUNTING PROPERTIES  
& REAL ESTATE<sup>SM</sup>

Office 662-846-1425



# Property Profile

## Residential Lot on the Tallahatchie River

### Location:

- Leflore County, MS
- Frontage on the Tallahatchie River
- Frontage on County Road 150

### Coordinates:

- 33.547500, -90.186442

### Property Information:

- Spacious 1.8 ± Acres
- Convenient to Grand Boulevard
- River Access
- Hardwood Trees

### Property Use:

- Residential

### Tax Information:

- Parcel 08034000000322 for 2023: \$821.34



**SMALLTOWN**  
HUNTING PROPERTIES  
& REAL ESTATE<sup>SM</sup>

**WILSON BRITT**

LAND SPECIALIST

C: 662-299-2367

O: 662-846-1425

[wilson@smalltownproperties.com](mailto:wilson@smalltownproperties.com)

701 W. Sunflower Rd - Cleveland, MS 38732

[smalltownproperties.com](http://smalltownproperties.com)

Information is believed to be accurate but not guaranteed.



Are you looking for a place to build the home of your dreams? This Leflore County 1.8± acre lot may be the one for you! Situated just outside the city limits of Greenwood, MS, on the Tallahatchie River, is an up-and-coming residential development. With this location, you do not have to sacrifice convenience for country living! Surrounded by agricultural fields to the north, the river to the south, and a handsome tree line to the west, you will find privacy with a view!!! The Tallahatchie Bridge takes you directly to Grand Boulevard, Greenwood's most quaint street.

This lot is located minutes away from Highway 82 and downtown Greenwood and less than one mile from Money Road. Whatever your goals, this is an ideal spot in the Mississippi Delta. For additional information and to schedule a showing, call Wilson Britt today!



**SMALLTOWN**  
HUNTING PROPERTIES  
& REAL ESTATE<sup>SM</sup>

**WILSON BRITT**

LAND SPECIALIST

C: 662-299-2367

O: 662-846-1425

[wilson@smalltownproperties.com](mailto:wilson@smalltownproperties.com)

701 W. Sunflower Rd - Cleveland, MS 38732

[smalltownproperties.com](http://smalltownproperties.com)

Information is believed to be accurate but not guaranteed.





**SMALLTOWN**  
HUNTING PROPERTIES  
& REAL ESTATE<sup>SM</sup>

**WILSON BRITT**  
LAND SPECIALIST

C: 662-299-2367

O: 662-846-1425

[wilson@smalltownproperties.com](mailto:wilson@smalltownproperties.com)

701 W. Sunflower Rd - Cleveland, MS 38732

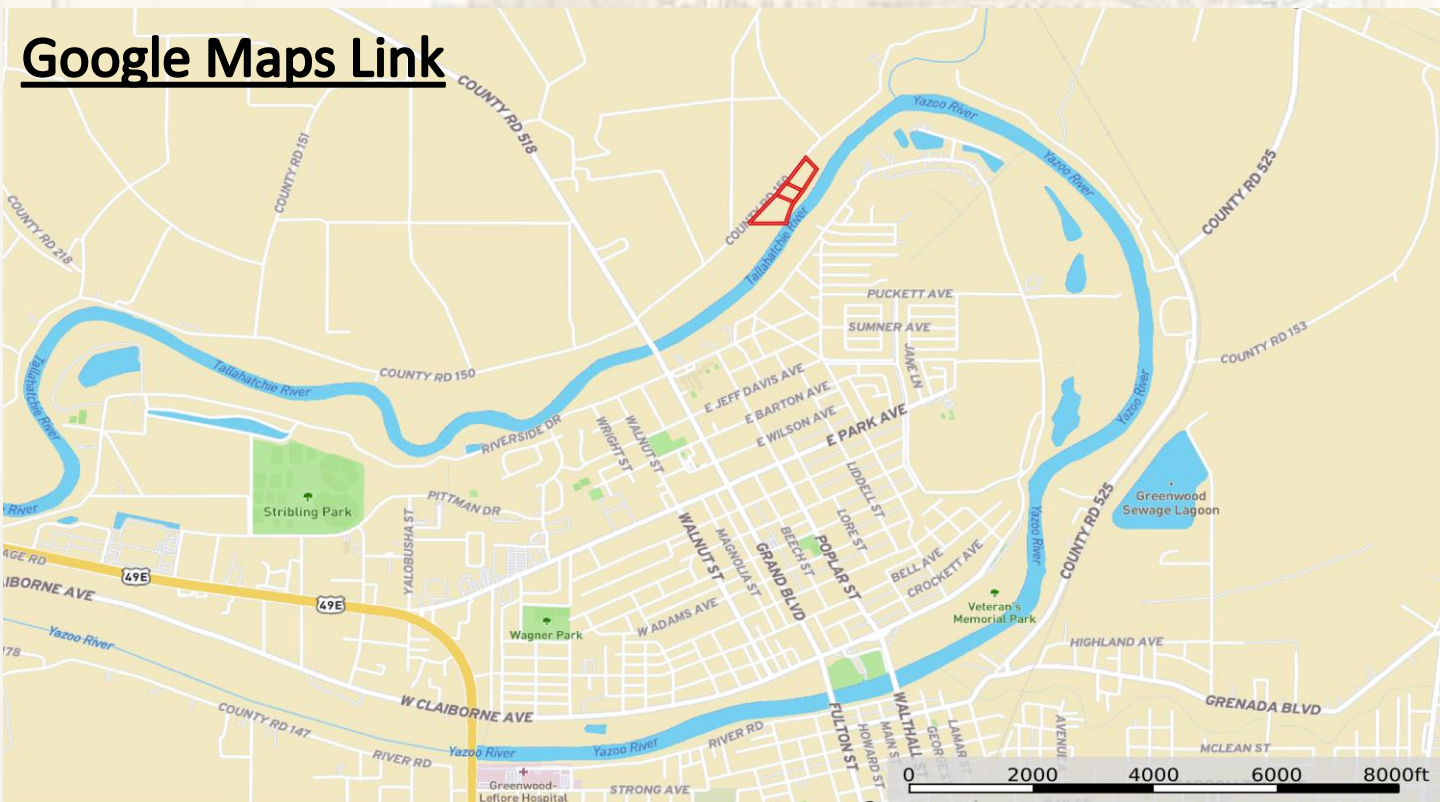
[smalltownproperties.com](http://smalltownproperties.com)

Information is believed to be accurate but not guaranteed.





[LandID Link](#)



[Google Maps Link](#)



**SMALLTOWN**  
HUNTING PROPERTIES  
& REAL ESTATE<sup>SM</sup>

**WILSON BRITT**

LAND SPECIALIST

C: 662-299-2367

O: 662-846-1425

[wilson@smalltownproperties.com](mailto:wilson@smalltownproperties.com)

701 W. Sunflower Rd - Cleveland, MS 38732

[smalltownproperties.com](http://smalltownproperties.com)

Information is believed to be accurate but not guaranteed.