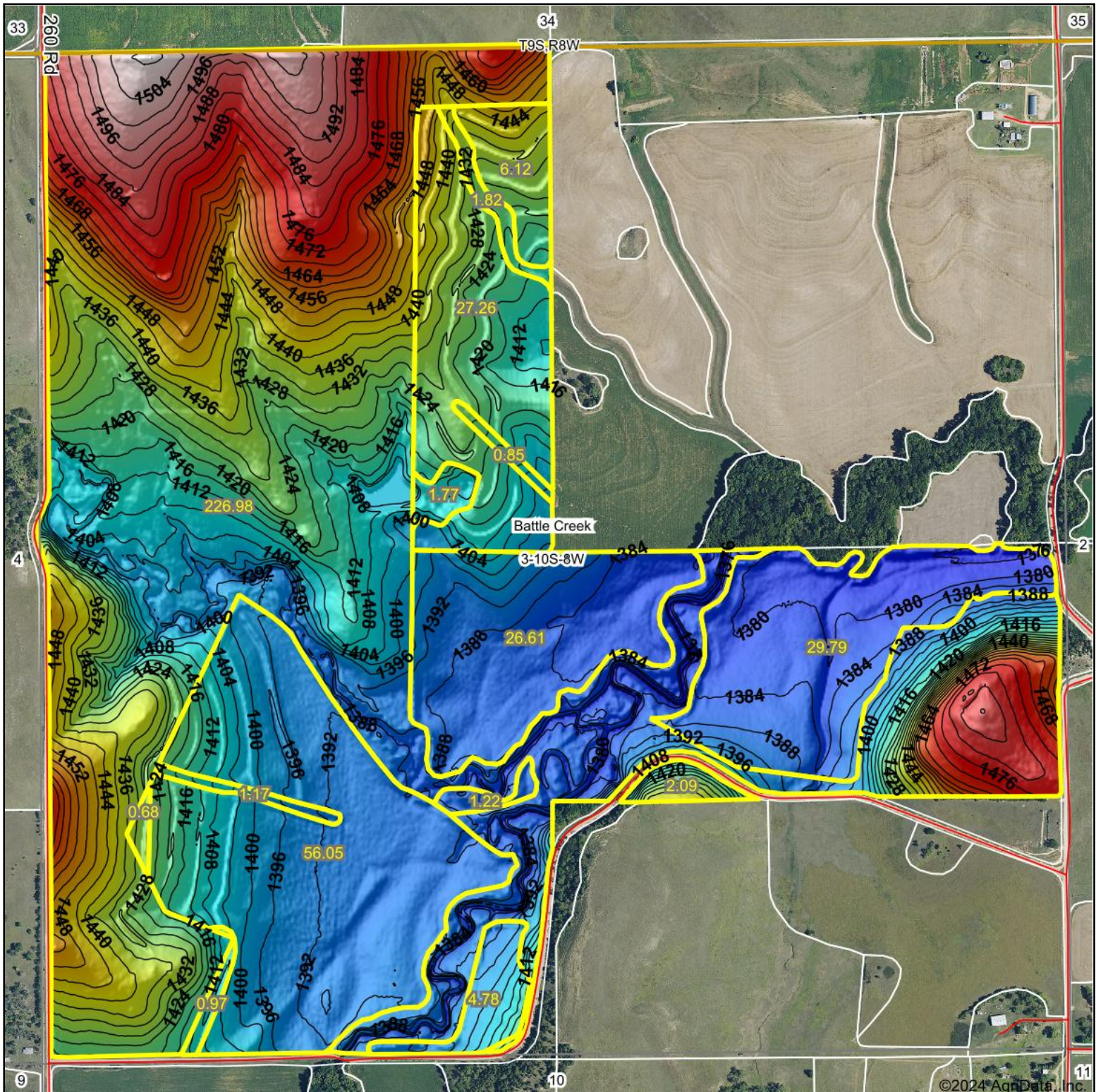


Topography Hillshade



Low Elevation High

Source: USGS 3 meter dem

0ft 808ft 1617ft

Interval(ft): 4

Min: 1,374.2

Max: 1,509.4

Range: 135.2

Average: 1,420.2

Standard Deviation: 33.01 ft



2/29/2024

3-10S-8W
Lincoln County
Kansas

Boundary Center: 39° 12' 43.78, -98° 12' 2.18



Maps Provided By:



© AgriData, Inc. 2023

www.AgriDataInc.com

Field borders provided by Farm Service Agency as of 5/21/2008.