



T R O P H Y
PROPERTIES AND AUCTION
LAND | RECREATIONAL | RESIDENTIAL

80± Acre Kansas Hunting & Tillable Ground for Sale - Bourbon County

www.TrophyPA.com • (855) 573-5263 • leads@trophyapa.com



PROPERTY ADDRESS:

00 Hwy 54
Redfield, KS 66769

PRICE: \$719,200

ACRES: 160±

COUNTY: Bourbon

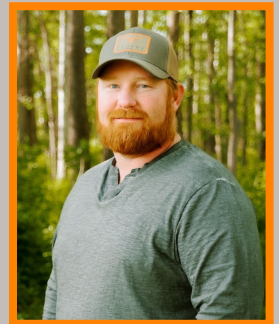
PROPERTY HIGHLIGHTS:

- Timber
- Tillable ground
- Titan Blind & All Seasons Feeder Convey
- 2 Small Ponds
- Stream
- Additional acreage available

PROPERTY DESCRIPTION:

Explore the ideal combination of productivity and leisure on this 80-acre property, featuring a mix of tillable ground and recreational space. This property allows for great whitetail hunting with plenty of timber, a stream that flows throughout, 2 small ponds, and includes a Titan blind and an All Seasons Feeder. This property sits along a state-maintained highway and has a variety of locations for possible building sites with electric and water capabilities. It is also available for purchase as part of a 160-acre package (MLS 2472137). A prime opportunity for agricultural ventures and outdoor enthusiasts alike.

PRESENTED BY:



CODY CUTLER

Land Specialist

M: (620) 224-6003

O: (855) 573-5263 x 756

E: ccutler@trophyapa.com

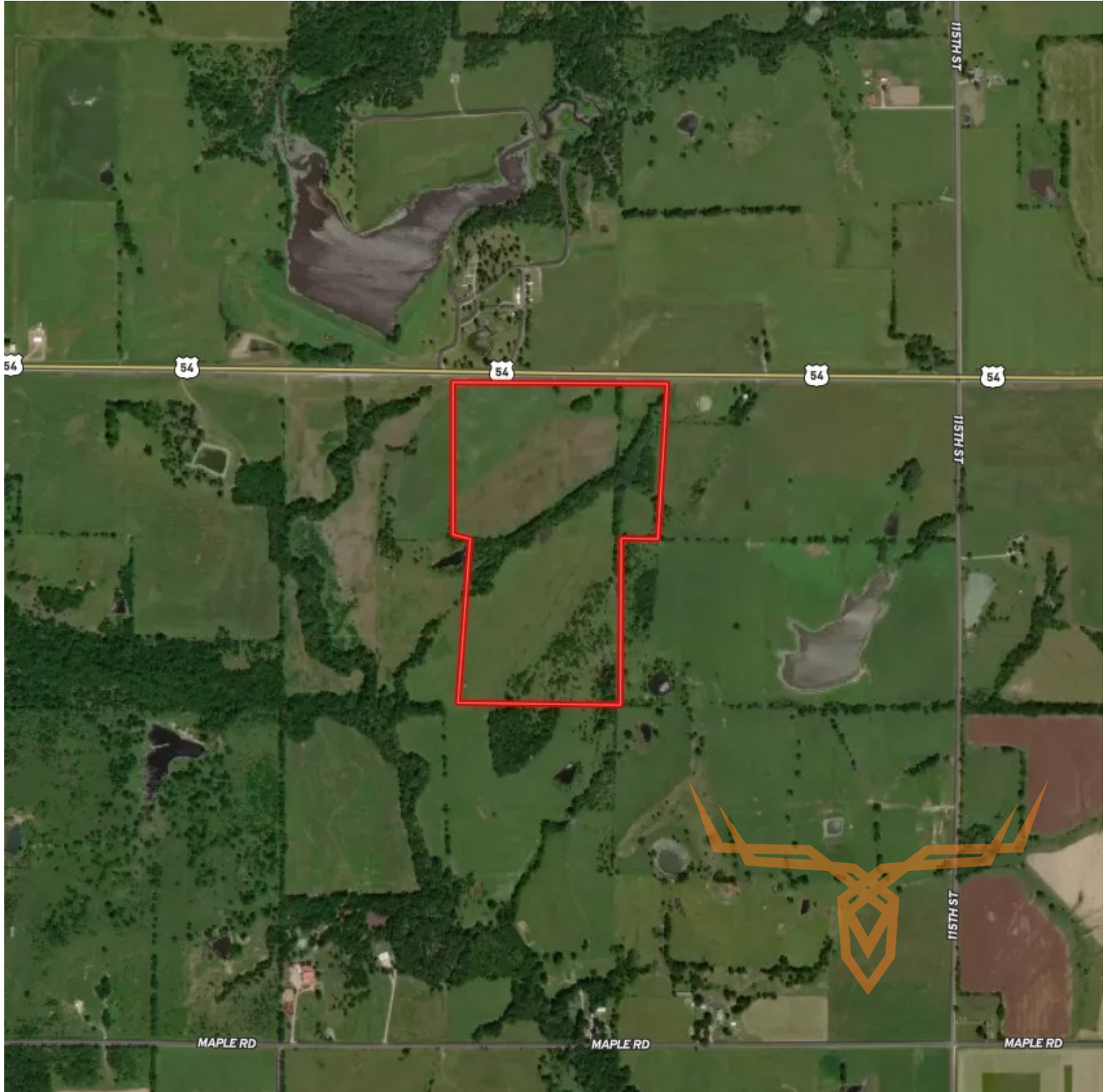
Trophy Properties and Auction
1519 E Wall Street
Fort Scott, KS 66701
www.trophyapa.com



T R O P H Y
PROPERTIES AND AUCTION
LAND | RECREATIONAL | RESIDENTIAL

80± Acre Kansas Hunting & Tillable Ground for Sale - Bourbon County

www.TrophyPA.com • (855) 573-5263 • leads@trophyPA.com



Broker does not guarantee the accuracy of sq. ft., lot size, or other information, buyer is advised to independently verify the accuracy of information through personal inspection and with appropriate professionals