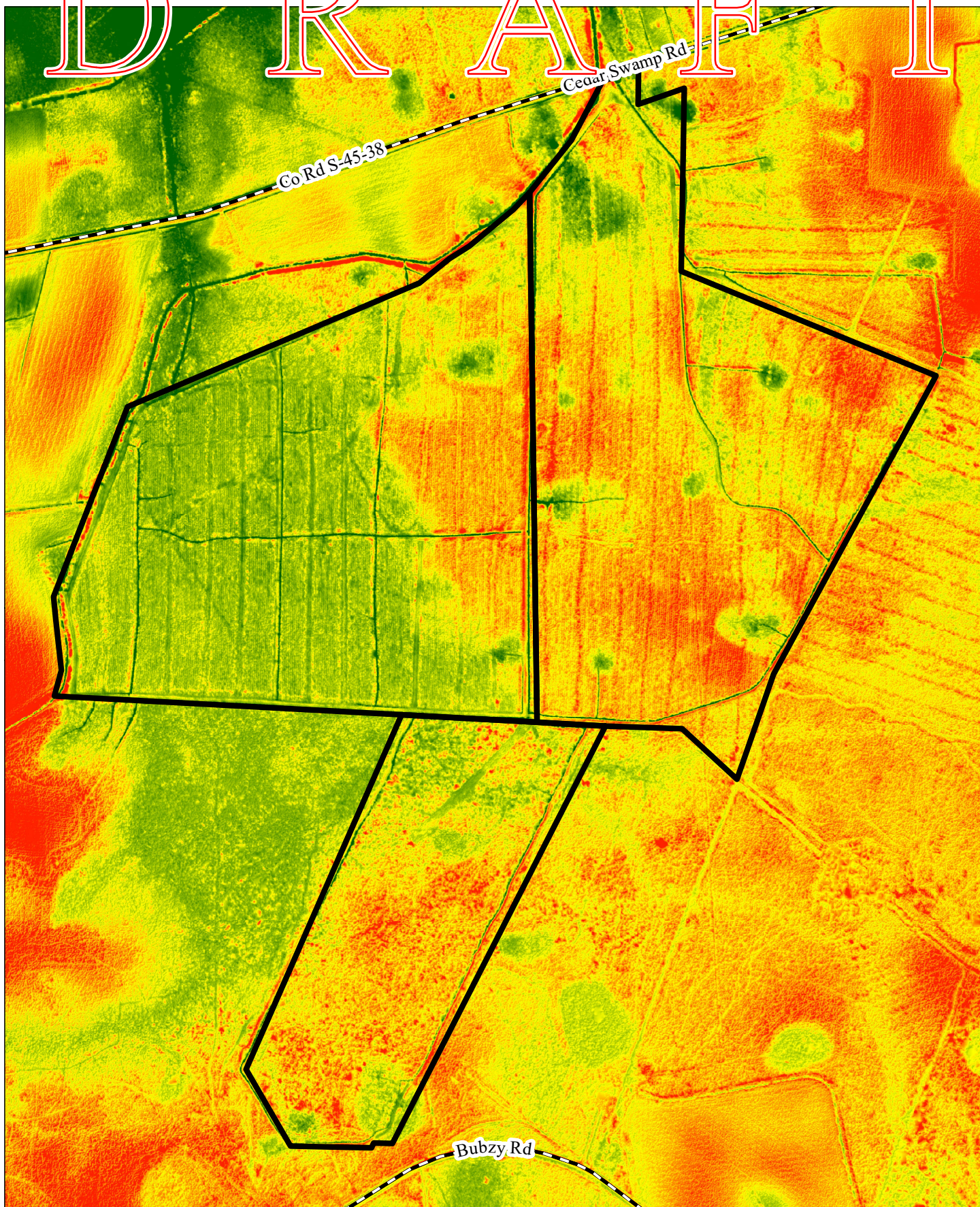


DRAFT



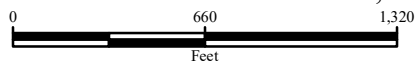
EXTERNAL SOURCES: NAIP 2021 TRUE COLOR AERIAL, U.S. CENSUS ROADS, WILLIAMSBURG COUNTY GIS PARCELS

Created By: Stephen Bennett
Date Created: November 30, 2022
Copyright 2022 Sabine & Waters, Inc.
R:\cussdat\mack_billy\cedar swamp\mapping\master.mxd
Sabine & Waters, Inc.
Environmental Land Management Consultants
P.O. Box 1072 Summerville, SC 29484
843.871.5383 (phone) 843.871.2050 (fax)
<http://www.sabine.net>

Disclaimer: This map is a graphic representation of data obtained from various sources. All efforts have been made to warrant the accuracy of this map. However, Sabine & Waters, Inc. disclaims all responsibility and liability for the use of this map.

REVISED: 11/30/2022

**LIDAR MAP - 61 FT TO 66 FT
MACK - CEDAR SWAMP TRACTS
WILLIAMSBURG COUNTY, SC**



LEGEND

- PROPERTY BOUNDARY: +/- 247 AC
- ROADS

Long: -79.721958 W
Lat: 33.647409 N