

60.44± Surveyed Acres in Webster County, MS

\$78,572



SMALLTOWN
HUNTING PROPERTIES
& REAL ESTATESM

Office 769-888-2522

Property Profile

The Webster 60.44

Location:

- Webster County, MS
- Fronts Adams Avenue
- Adjoins the Eupora City Limits

Coordinates:

- 33.530433, -89.278012

Property Information:

- 60.44± Surveyed Acres
- Recent Cutover
- Small Pocket of Remaining Hardwoods

Property Use:

- Residential
- Recreational
- Potential Development

Tax Information:

- Parcel 073P010805.00: \$31.39 for 2023
- Parcel 0730000801.00: \$165.12 for 2023



SMALLTOWN
HUNTING PROPERTIES
& REAL ESTATESM

ADAM HESTER, ALC

ASSOCIATE BROKER

C: 601-506-5058

O: 769-888-2522

adam@smalltownproperties.com

4848 Main St. - Flora, MS 39071

smalltownproperties.com

Information is believed to be accurate but not guaranteed.



If you are searching for a versatile property, consider the Webster 60.44 in Eupora, Mississippi. Situated in Webster County, this surveyed 60.44± acre tract provides a blank slate and various opportunities. Approximately 8 acres are located in the city limits just off Adams Avenue, while the remaining acreage is in the county. This is a great opportunity for a small development project or a spot to build your forever home with acreage to play on. The terrain offers cutover with a gentle roll, bottomland, and a small patch of standing timber in the southeast corner. Utilities are located at the road. For more information, call Adam Hester today!



SMALLTOWN
HUNTING PROPERTIES
& REAL ESTATESM

ADAM HESTER, ALC

ASSOCIATE BROKER

C: 601-506-5058

O: 769-888-2522

adam@smalltownproperties.com

4848 Main St. - Flora, MS 39071

smalltownproperties.com

Information is believed to be accurate but not guaranteed.



SMALLTOWN
HUNTING PROPERTIES
& REAL ESTATESM

ADAM HESTER, ALC

ASSOCIATE BROKER

C: 601-506-5058

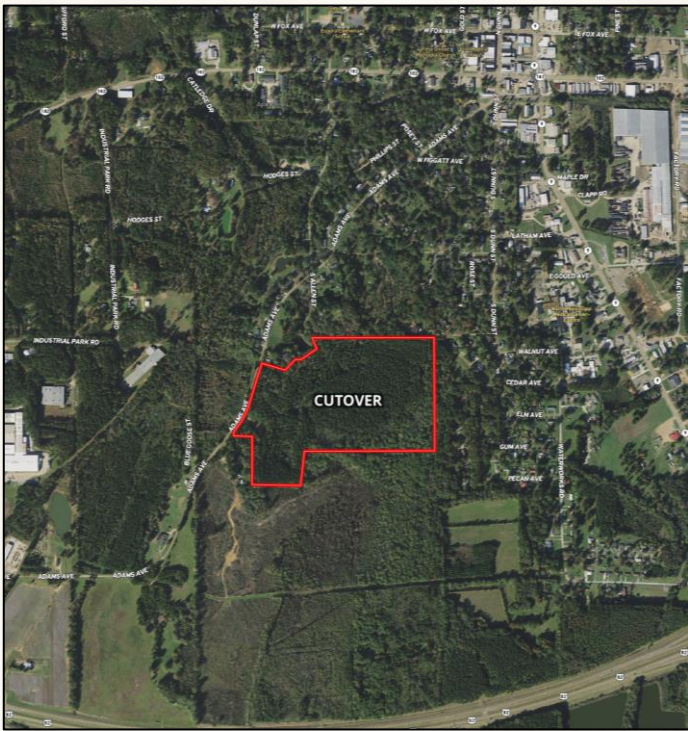
O: 769-888-2522

adam@smalltownproperties.com

4848 Main St. - Flora, MS 39071

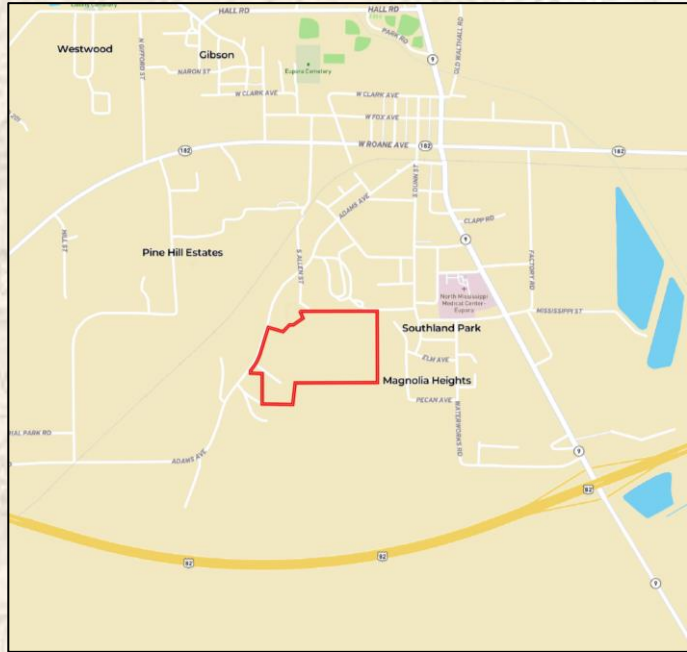
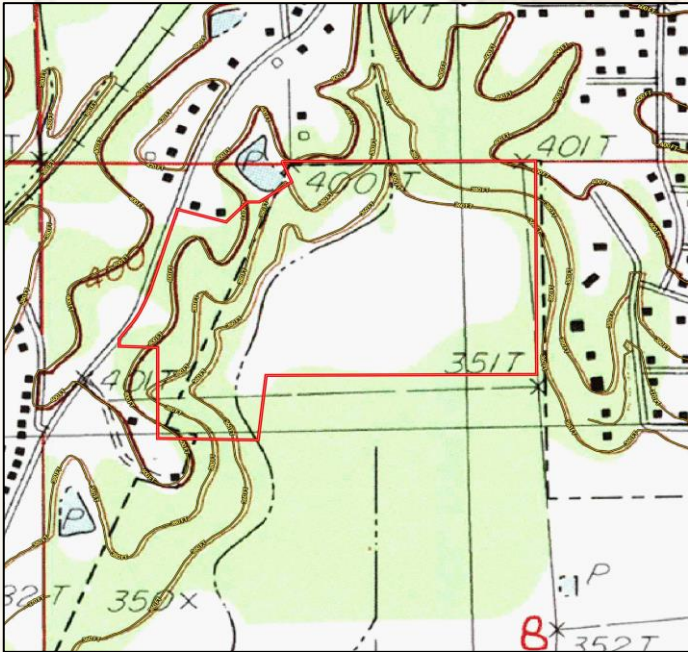
smalltownproperties.com

Information is believed to be accurate but not guaranteed.



[Google Map Link](#)

[Interactive Map Link](#)



SMALLTOWN
HUNTING PROPERTIES
& REAL ESTATESM

ADAM HESTER, ALC

ASSOCIATE BROKER

C: 601-506-5058

O: 769-888-2522

adam@smalltownproperties.com

4848 Main St. - Flora, MS 39071

smalltownproperties.com

Information is believed to be accurate but not guaranteed.