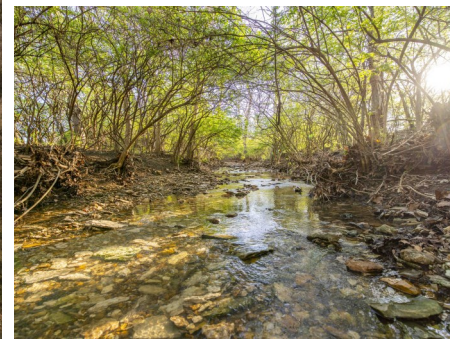




T R O P H Y
PROPERTIES AND AUCTION
LAND | RECREATIONAL | RESIDENTIAL

101± Acre Income Producing Tillable Tract with Hunting for Sale - Lincoln County

www.TrophyPA.com • (855) 573-5263 • leads@trophyapa.com



PROPERTY ADDRESS:

00 Pebble Creek Drive
Elsberry, MO 63343

PRICE: \$959,900

ACRES: 101.28±

COUNTY: Lincoln

PROPERTY HIGHLIGHTS:

- Located at end of dead-end road Dr. & Chillcut Ln.
- 90+/- acres tillable cash rented @ \$100 per acre
- Cash rent will be prorated or credited to Buyer
- Deer and Turkey Hunting
- Multiple access points via Pebble Creek
- Property could easily be divided
- Upper Sandy Creek flows along the Western Boundary
- Elsberry School District

PROPERTY DESCRIPTION:

101+/- acre tract consisting of mostly tillable land located in Lincoln County. The property is located at the end of a dead-end road and features 90+/- acres tillable cash rented at \$100 per acre, deer / turkey hunting, Upper Sandy Creek frontage and multiple access points via Pebble Creek Dr. or Chillcut Ln allowing the property to be easily divided. Elsberry Schools. Great opportunity to own land in Lincoln County, Call Today!

Listed in Cooperation with Gil Dameron/Cannon Realty Inc.



PRESENTED BY:

JOE OGDEN

Land & Home Specialist

M: (636) 358-3567

P: (855) 573-5263 x707

E: jogden@trophyapa.com

Trophy Properties and Auction

640 Cepi Drive

Suite 100

Chesterfield, MO 63005

www.Trophyapa.com

leads@trophyapa.com



T R O P H Y
PROPERTIES AND AUCTION
LAND | RECREATIONAL | RESIDENTIAL

101± Acre Income Producing Tillable Tract with Hunting for Sale - Lincoln County

www.TrophyPA.com • (855) 573-5263 • leads@trohypa.com



Broker does not guarantee the accuracy of sq. ft., lot size, or other information, buyer is advised to independently verify the accuracy of information through personal