



MINERAL BRANCH HAYFIELD

STATE ROAD 66
ZOLFO SPRINGS, FL 33890

Daniel Lanier
C: 863.698.2971
daniel.lanier@svn.com

Property Overview



Sale Price

\$275,000

OFFERING SUMMARY

Acreage:

16.7 Acres

Price / Acre:

\$16,467

City:

Zolfo Springs

County:

Hardee

Property Type:

Land: Agronomics, Farms
& Nurseries Properties,
Hemp, Nursery, Ranch,
Sod, Vegetables

PROPERTY OVERVIEW

Mineral Branch Hayfield is 16.7 acres located 5 miles east of Zolfo Springs on SR66. It is currently planted in hermarthria grass for hay production. There are two deep wells located on the property, a 6" and a 10" well, each equipped with diesel power units. These wells give a grower the possibility to farm most anything, or irrigated the existing hayfield. This property is 100% uplands with scattered trees, making a perfect setting for a homesite as well.

Specifications & Features



SPECIFICATIONS & FEATURES

Land Types:

- Agronomics
- Farms & Nurseries Properties
- Hemp
- Nursery
- Ranch
- Sod
- Vegetables

Uplands / Wetlands:

100% Uplands

Soil Types:

- Pomona
- Smyrna and Felda Sands

Water Source & Utilities:

Two deep wells with diesel power units

Road Frontage:

852 Foot of Road Frontage on SR 66

Fencing:

Barbed wire

Current Use:

Hayfield

Grass Types:

Hermathria

Wells Information:

One 12" well and One 8" well with diesel engines

Income Features:

Hay Production

Location



LOCATION & DRIVING DIRECTIONS

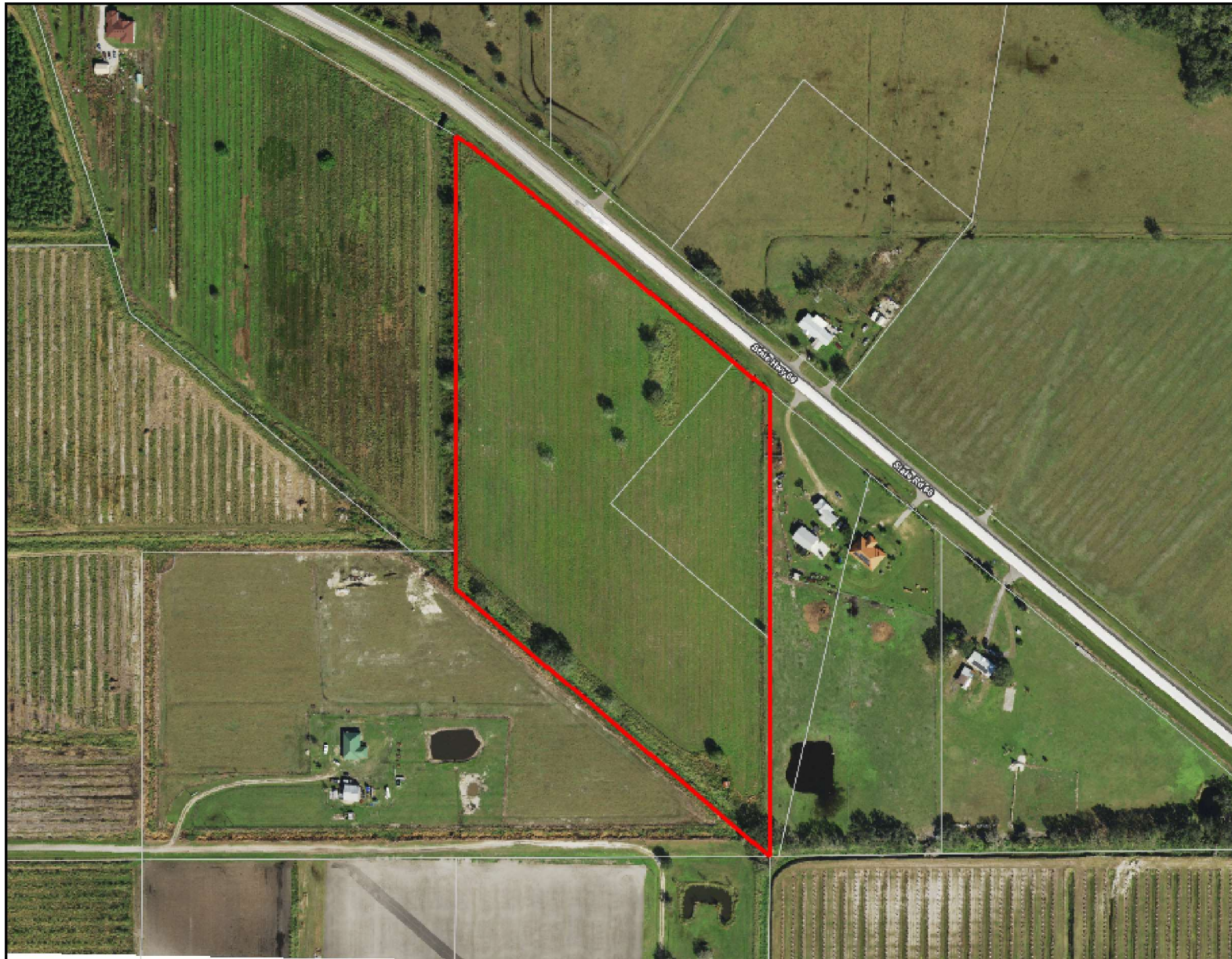
Parcel: 04-35-26-0850-00001-0038 33-34-26-0000-08420-0000

GPS: 27.4749415, -81.7165204

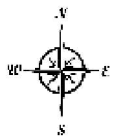
Driving Directions:

Showing Instructions: Call Daniel Lanier



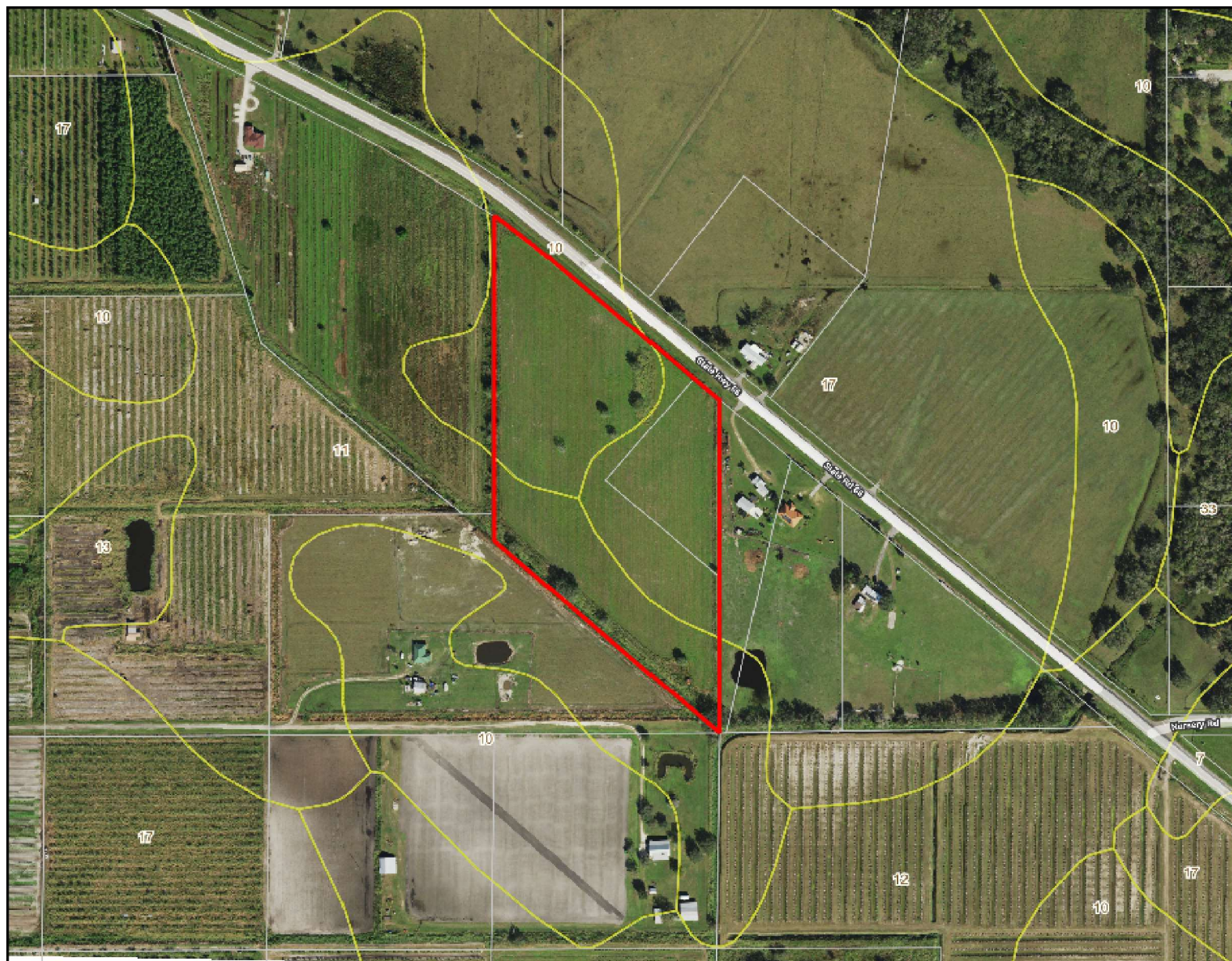


- County Boundaries
- Polygons Drawing
- Lines Drawing
- Labels Drawing
- Points Drawing
- Streets MapWise
- Parcel Outlines



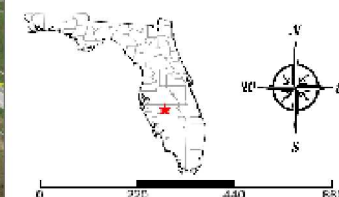
0 100 200 400 ft

©2023 SVN®. SVN | Saunders Ralston Dantzer Real Estate® is a registered trademark, licensed to SVN Shared Value Network®. Any information displayed should be verified and is not guaranteed to be accurate by SVN Saunders Ralston Dantzer. You may not copy or use this material without written consent from SVN Saunders Ralston Dantzer.

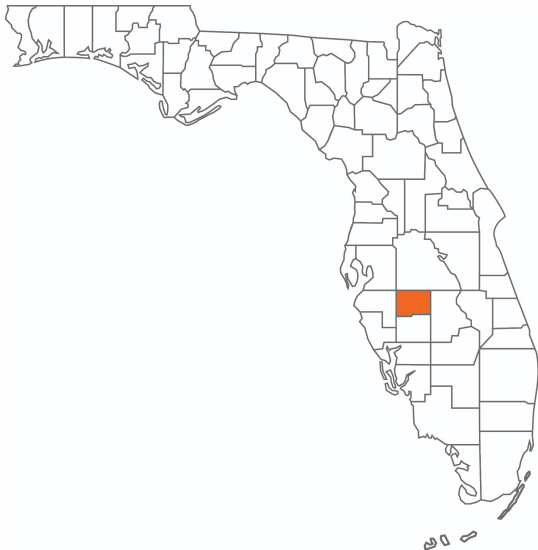


- County Boundaries
- Polygons Drawing
- Lines Drawing
- Labels Drawing
- Points Drawing
- Streets MapWise
- Parcel Outlines
- Soils Boundaries

CODE	DESC	ACRES
10	Pomona Fine Sand	6
17	Smyrna Sand	5
11	Felda Fine Sand	4
TOTAL = 15.0954491919864 acres		



©2023 SVN®. SVN | Saunders Ralston Dantzier Real Estate is a registered trademark, licensed to SVN Shared Value Network. Any information displayed should be verified and is not guaranteed to be accurate by SVN Saunders Ralston Dantzier. You may not copy or use this material without written consent from SVN Saunders Ralston Dantzier.



HARDEE COUNTY
FLORIDA

Founded	1921	Density	42.2 [2019]
County Seat	Wauchulla	Population	25,129 [2023]
Area	637 sq mi	Website	hardeecounty.net

Hardee County is located in West Central Florida and has a population of 25,645. Flowing through the county, the serene Peace River offers "Old Florida" recreation like fossil hunting, kayaking, and canoeing. Additionally, Hardee County is situated amid large phosphate deposits in an area known as "Bone Valley." With phosphate mining as a significant industry, The Mosaic Company has become a leading employer that currently owns all the mining land in Hardee County. The Mosaic Company is a Fortune 500 company with headquarters in Tampa, Florida

According to DataUSA, the county's 2020 economy employs 9,710 people, with a high number of employees in the occupations of Forestry, Fishing & Hunting [1,002 people]. The highest-paying industries by median earnings are

Advisor Biography



DANIEL LANIER

Senior Advisor

daniel.lanier@svn.com

Direct: 877.518.5263 x377 | Cell: 863.698.2971

PROFESSIONAL BACKGROUND

Daniel Lanier is a Senior Advisor at SVN | Saunders Ralston Dantzler Real Estate in Lakeland, Florida.

Previously, Daniel was a founder and managing partner of Sawmill Citrus Nursery. With years of experience in Central Florida's agricultural industry, his knowledge and expertise extend to and beyond commercial beef cattle, citrus, nursery, and row crop farming.

At SVN SRD, Daniel's specialties encompass a wide range of land types, including ranches, citrus groves, and agricultural land. From livestock to produce, his expertise has assisted clients in various land transactions throughout the Central Florida real estate market.

Daniel has also worked in crop insurance since 2011. This experience, now combined with his role as a real estate advisor, has allowed him to service clients all over the southeastern United States, further solidifying himself as an expert in this field.

Growing up in Central Florida, Daniel graduated from Fort Meade High School and South Florida State College. He and his wife, Randi, have been married since 2015. Together, they are proud parents to both a son and a daughter.

Daniel specializes in:

SVN | Saunders Ralston Dantzler
1723 Bartow Rd

One of America's **BEST BROKERAGES**



**One of America's
Best Brokerages**



**APEX Top
National Producer**
**Dean Saunders,
ALC, CCIM**



**Most Influential
Business Leaders**
**Dean Saunders,
ALC, CCIM**



**Largest Commercial
Real Estate Brokers
in Tampa Bay**



**Ranked 210 on Inc.
5000 Regional List**



For more information visit www.SVNsaunders.com

HEADQUARTERS

1723 Bartow Rd
Lakeland, FL 33801
863.648.1528

ORLANDO

605 E Robinson Street, Suite 410
Orlando, Florida 32801
386.438.5896

NORTH FLORIDA

356 NW Lake City Avenue
Lake City, Florida 32055
352.364.0070

GEORGIA

203 E Monroe Street
Thomasville, Georgia 31792
229.299.8600

©2024 Saunders Ralston Dantzler Real Estate. All SVN® Offices Independently Owned and Operated SVN | Saunders Ralston Dantzler Real Estate is a full-service land and commercial real estate brokerage representing buyers, sellers, investors, institutions, and landowners since 1996. We are recognized nationally as an authority on all types of land, including agriculture, ranch, recreation, and residential development. Our commercial real estate services include property management, leasing and tenant representation, valuation, business brokerage, and advisory and counseling services for office, retail, industrial, and multifamily properties. Our firm also features an auction company, a forestry division, international partnerships, and extensive expertise in conservation easements. Located in Florida, Georgia, and Alabama, we provide proven leadership and collaborative expertise backed by the strength of the SVN® global platform.

