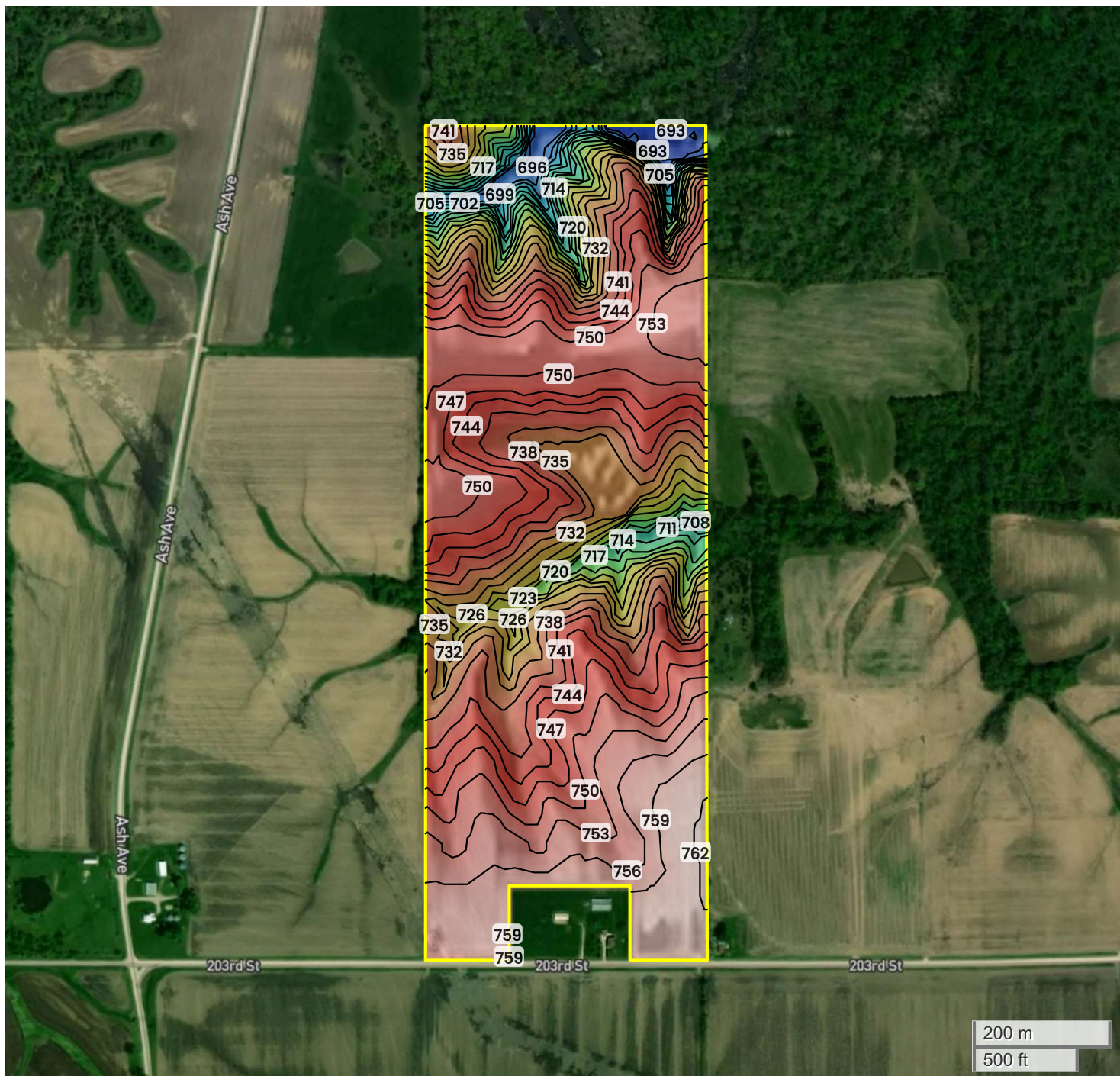




115 ACRES (115.00 AC TOTAL, 61.96 AC TILLABLE)

## TOPOGRAPHY



693 ft

762 ft



Center: 41°1'8.28"N, 92°9'40.65"W

19-72N-11W

Locust Grove Township  
Jefferson County, IA

Source: USGS 10m DEM

Interval(ft): 3

Max: 762.0 ft

Min: 693.0 ft

Range: 69.0 ft

Average: 727.5 ft

FarmWorth, LLC makes no representations or warranties, express or implied, as to the accuracy of any information, data, numerical values, boundaries, or any other information generated through the use of FarmWorth.com. User is solely responsible for independently investigating and determining all information provided through FarmWorth.com prior to use and waives any and all claims against FarmWorth, LLC for any inaccuracies or inconsistencies in the information and/or data.

