



STEPPES CREEK RANCH

6652 Highway 84 E, Early, TX

29 Acres | \$419,000



Copyright 2024 Grand Land Realty, LLC
The material contained in this document is based in part upon information furnished to Grand Land Realty, LLC. by sources deemed to be reliable. The information is believed to be accurate in all material respects, but no representation or warranty, expressed, or implied, as to list accuracy or completeness is made by any party. Recipients should conduct their own investigation and analysis of the information described herein.



Dustin Preston

Realtor®- Land Specialist

dpreston@grandland.com

(281) 787-5401

PROPERTY DESCRIPTION

Steppes Creek Ranch is a charming 29-acre tract located in Early, TX. As you enter the property, you'll see a 2-bedroom, 1-bath, approximately 1000 Sq. Ft. ranch home sitting atop the hill. From the porch, your views are endless! Throughout the property, you'll find the perfect amount of improved pasture accompanied by plenty of mature trees and brush. If you're looking for a Homestead or recreational weekend property, The Steppes Creek Ranch was made for you.

Steppes Creek Ranch is 29 acres accessed by deeded easement from HWY 84. It has the perfect combination of 60/40 improved pasture and hardwoods/brush. On the back side of the property, a tributary of Steppes Creek traverses the property from east to west, providing an extra water source for the wildlife currently on the property. Wildlife found on the property includes Whitetail deer, wild hogs, and multiple varmint species.

Steppes Creek Ranch offers a 1000 Sq. ft. two-bedroom, one-bath ranch house. The house has two decks attached and multiple storage buildings on the property. Zephyr Water and Comanche Electric service the property. The property is perimeter fenced with various types of fencing.

Taxes for 2023 were approximately \$5206.79

Copyright 2024 Grand Land Realty, LLC
The material contained in this document is based in part upon information furnished to Grand Land Realty, LLC. by sources deemed to be reliable. The information is believed to be accurate in all material respects, but no representation or warranty, expressed, or implied, as to list accuracy or completeness is made by any party. Recipients should conduct their own investigation and analysis of the information described herein.



Dustin Preston
Realtor®- Land Specialist
dpreston@grandland.com
(281) 787-5401



SCAN HERE TO VIEW MORE OF
STEPPE CREEK RANCH

LOCATION

Brown County

15 miles to Brownwood, 58 miles to Lampasas, 127 miles to Austin, 140 miles to Dallas- Fort Worth

DIRECTIONS

From Zephyr, travel North on Hwy 84 for approximately 5 miles, turn left and you'll see the gate.

Copyright 2024 Grand Land Realty, LLC
The material contained in this document is based in part upon information furnished to Grand Land Realty, LLC. by sources deemed to be reliable. The information is believed to be accurate in all material respects, but no representation or warranty, expressed, or implied, as to list accuracy or completeness is made by any party. Recipients should conduct their own investigation and analysis of the information described herein.



Dustin Preston

Realtor®- Land Specialist

dpreston@grandland.com


(281) 787-5401



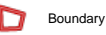
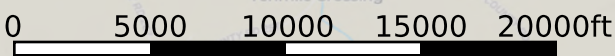
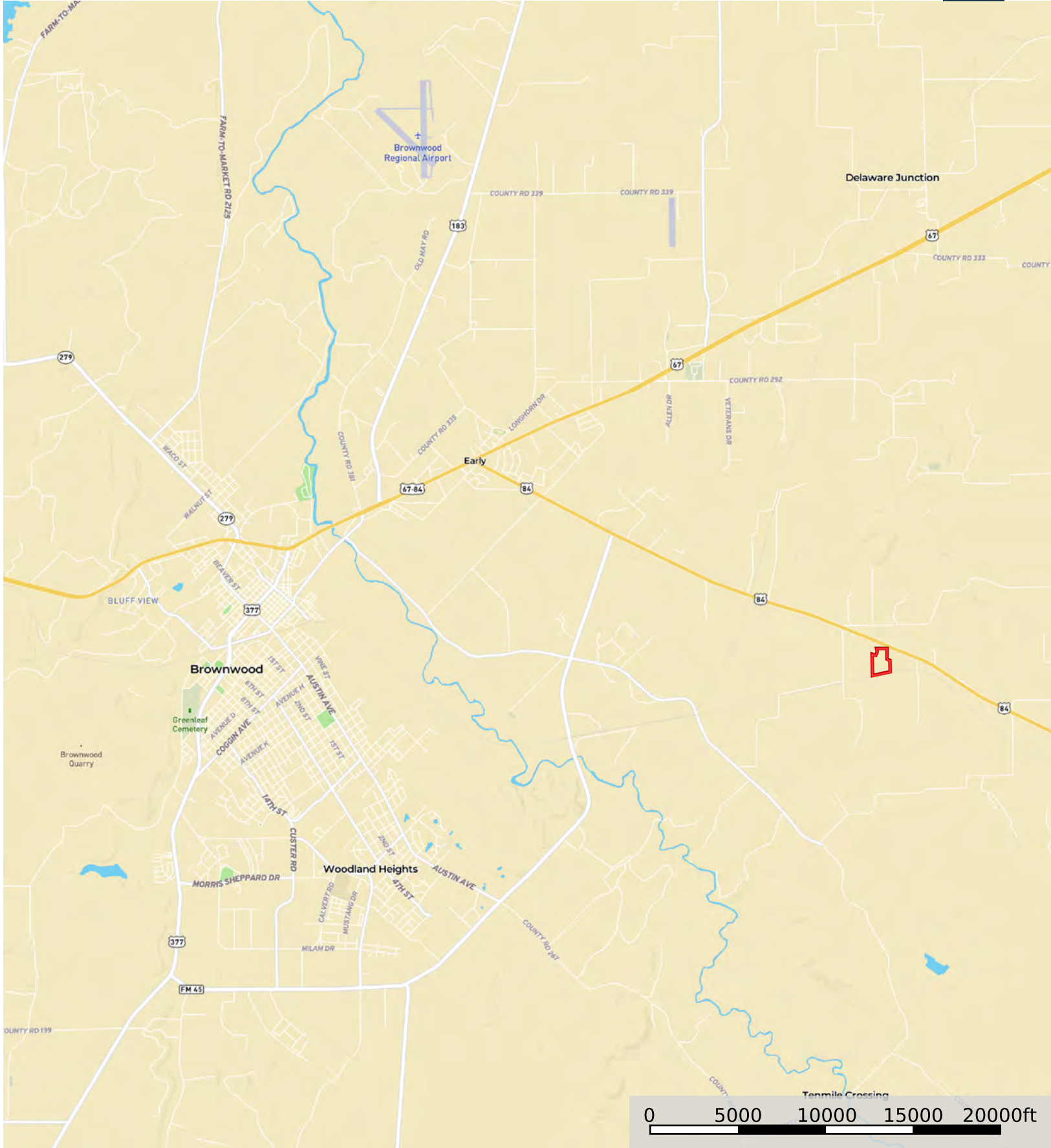


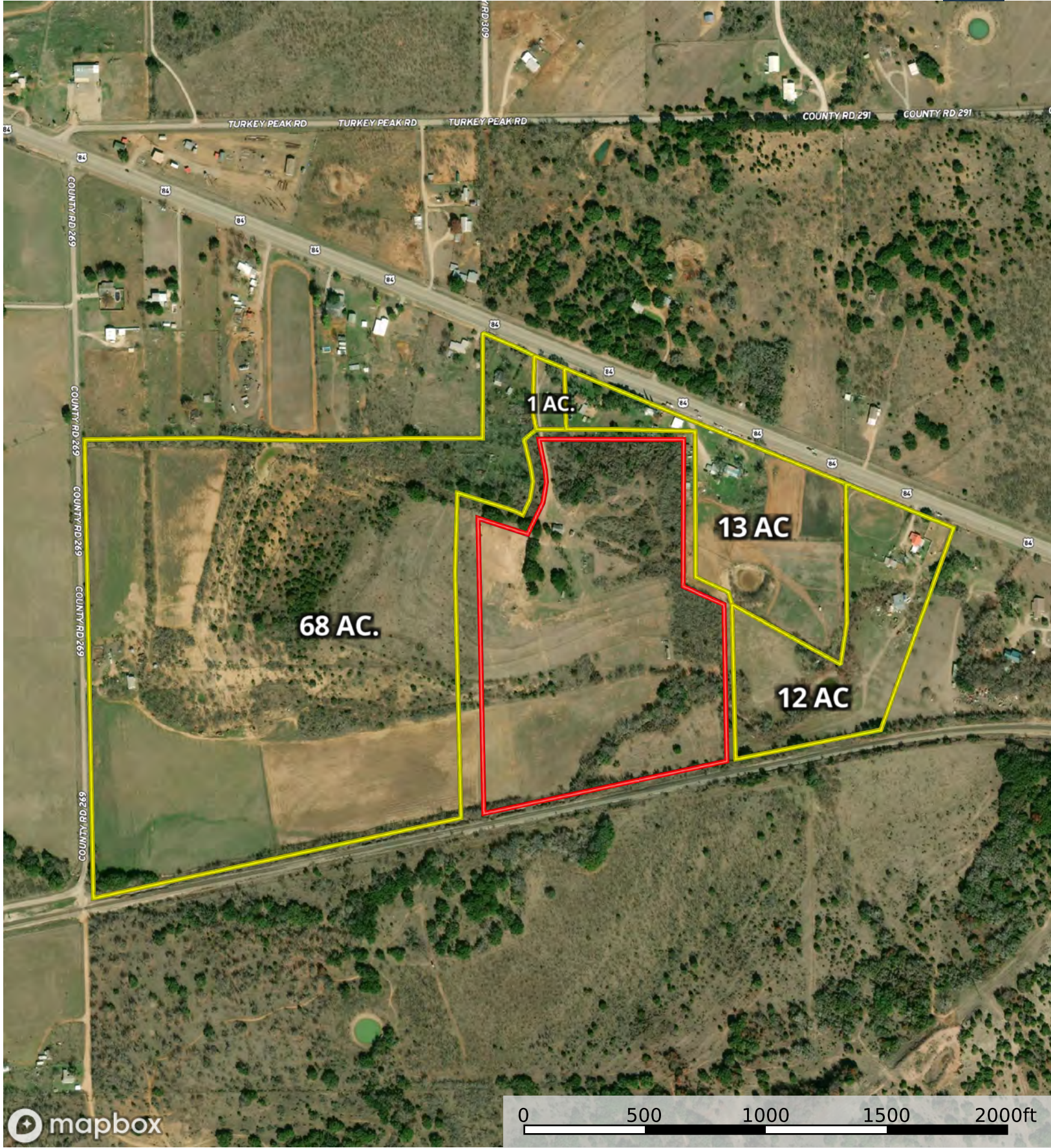
 Boundary



 Boundary

6652 Highway 84 E, Early, TX 78623
Brown County, Texas, 29.11 AC +/-





Boundary 1