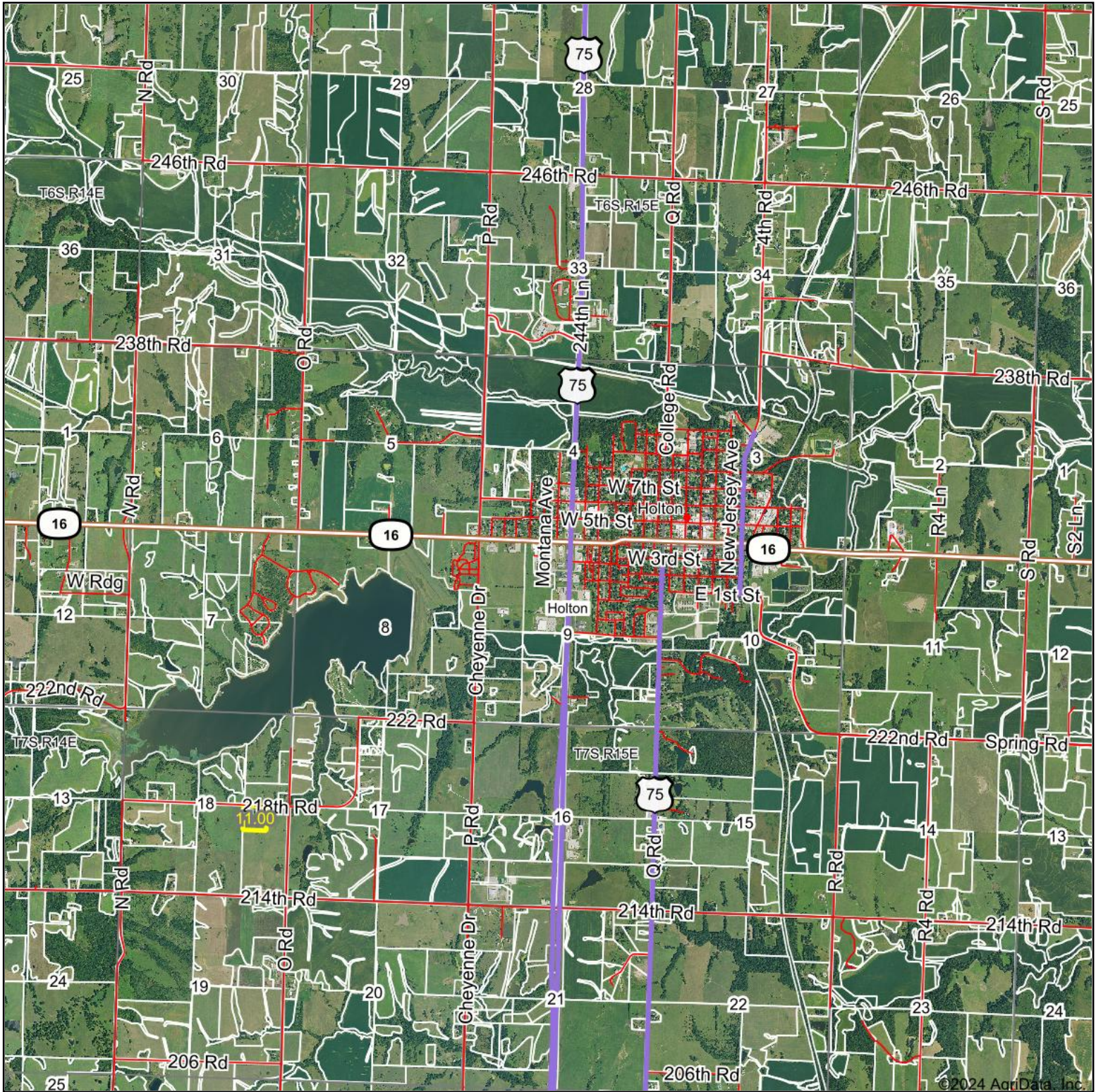


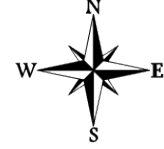
Aerial Map



Boundary Center: 39° 26' 25.68, -95° 46' 45.41

0ft 4488ft 8977ft

18-7S-15E
Jackson County
Kansas



Maps Provided By:
surety
CUSTOMIZED ONLINE MAPPING
© AgriData, Inc. 2023 www.AgriDataInc.com

5/13/2024

Field borders provided by Farm Service Agency as of 5/21/2008.