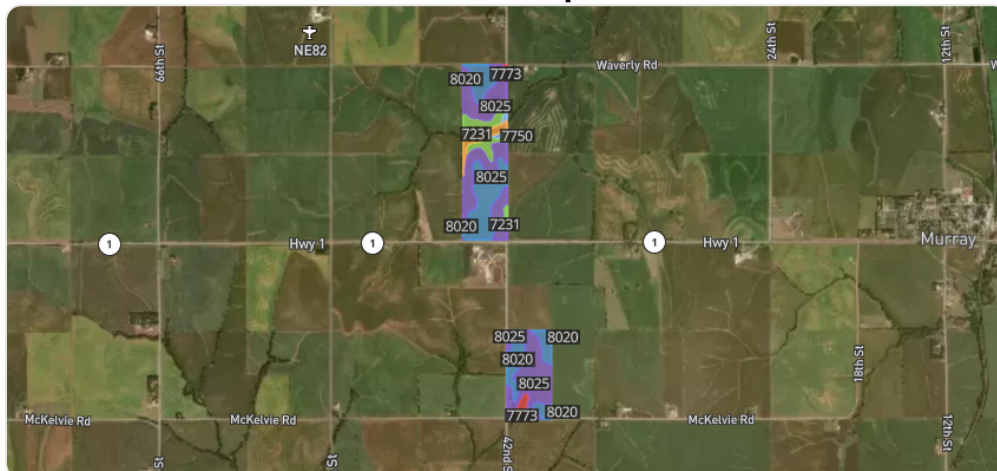


Soil Map

Total NCCPI: **85.1**

Soil Code	Soil Description	% of Farm	Acres	NCCPI
8025	8025 Marshall silty clay loam, 6 to 11 percent slopes, eroded	49.40%	117.44	85
8020	8020 Marshall silty clay loam, 2 to 6 percent slopes, eroded	34.70%	82.50	91
7231	7231 Judson silt loam, 2 to 6 percent slopes	9.10%	21.63	78
7867	7867 Nodaway silt loam, channeled, frequently flooded	3.90%	9.27	51
7773	7773 Colo-Nodaway complex, frequently flooded	1.80%	4.28	55
7750	7750 Nodaway silt loam, occasionally flooded	1.10%	2.62	94

All data courtesy SSURGO database distributed by the U.S. NRCS