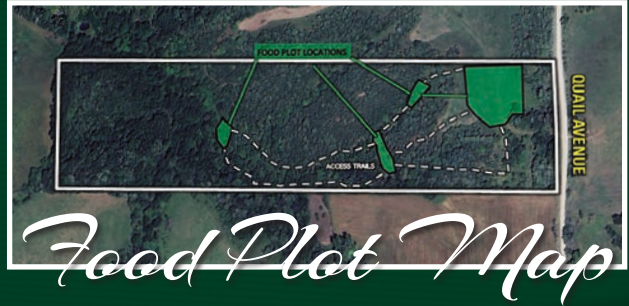
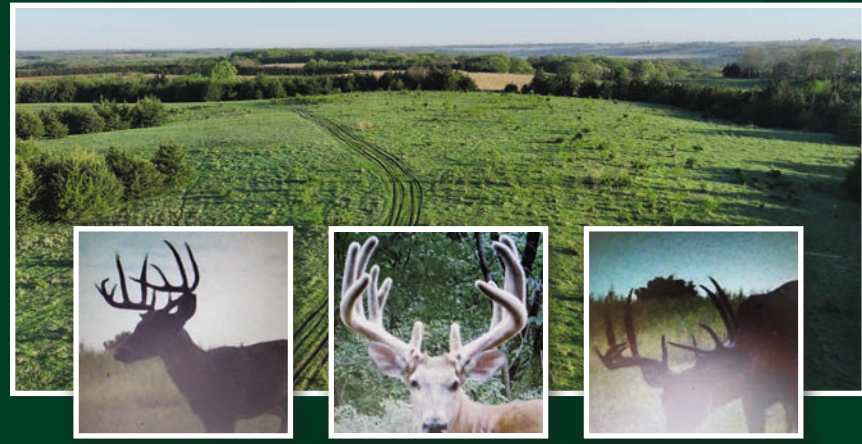


LAND AVAILABLE

LISTING 17618

# Union County IOWA

Peoples Company is pleased to present this unique 38.49 surveyed acres opportunity in Southern Union County outside Arispe, Iowa. Unlock the potential of Southern Iowa with this affordably priced farm, nestled close to Sun Valley Lake & within an hour's drive of Des Moines. This farm is desirable for a multitude of reasons.



QUAIL AVENUE | ARISPE, IA 50831  
From Arispe, Iowa: Head east on 240th Street for 2.75 miles to Quail Avenue. Turn left (north) on Quail Avenue and proceed north for .75 miles. The property is located on the left side (west) of the road. Look for the Peoples Company sign.

PRICE: \$320,000 NET TAXES: \$422.00

*Kolt Kiburz*  
515.468.5035 | IA LIC S68372000  
Kolt@PeoplesCompany.com

*Brandon Tessau*  
719.502.7394 | IA LIC S70862000  
Brandon.Tessau@PeoplesCompany.com



PEOPLES COMPANY .COM

All information, regardless of source, is deemed reliable but not guaranteed and should be independently verified. The information may not be used for any purpose other than to identify and analyze properties and services. The data contained herein is copyrighted by Peoples Company and is protected by all applicable copyright laws. Any dissemination of this information is in violation of copyright laws and is strictly prohibited.