

160 Acres of Pasture with Pens & Working Facility  
Northeast Quarter 20-16-30  
Lane County, Kansas



# 160 Acres of Pasture with Pens & Working Facility

## Northeast Quarter 20-16-30

### Lane County, Kansas

#### Legal Description

The Northeast Quarter (NE/4) of Section Twenty (20), Township Sixteen (16) South, Range Thirty (30) West of the Sixth P.M., Lane County, Kansas.

#### Description of the Property

This property consists of 160 acres with very nice working area with feed pens.

The working barn is 30'x40' with a heated and cooled office area with a restroom and a large storage area. The working area consists of a Pearson hydraulic chute, Pearson palpation chute and a Blattner adjustable snake and tub.

The feed pens are constructed of pipe with automatic waterers and approximately 350 feet of concrete bunks.

The pasture portion is very well fenced and has a water well that supplies water to the barn and water tanks throughout the pasture.

#### Minerals

This tract is selling with the mineral rights.

#### Possession

Buyer shall get full possession upon closing.

#### Real Estate Taxes

2023 Real Estate Taxes \$674.08

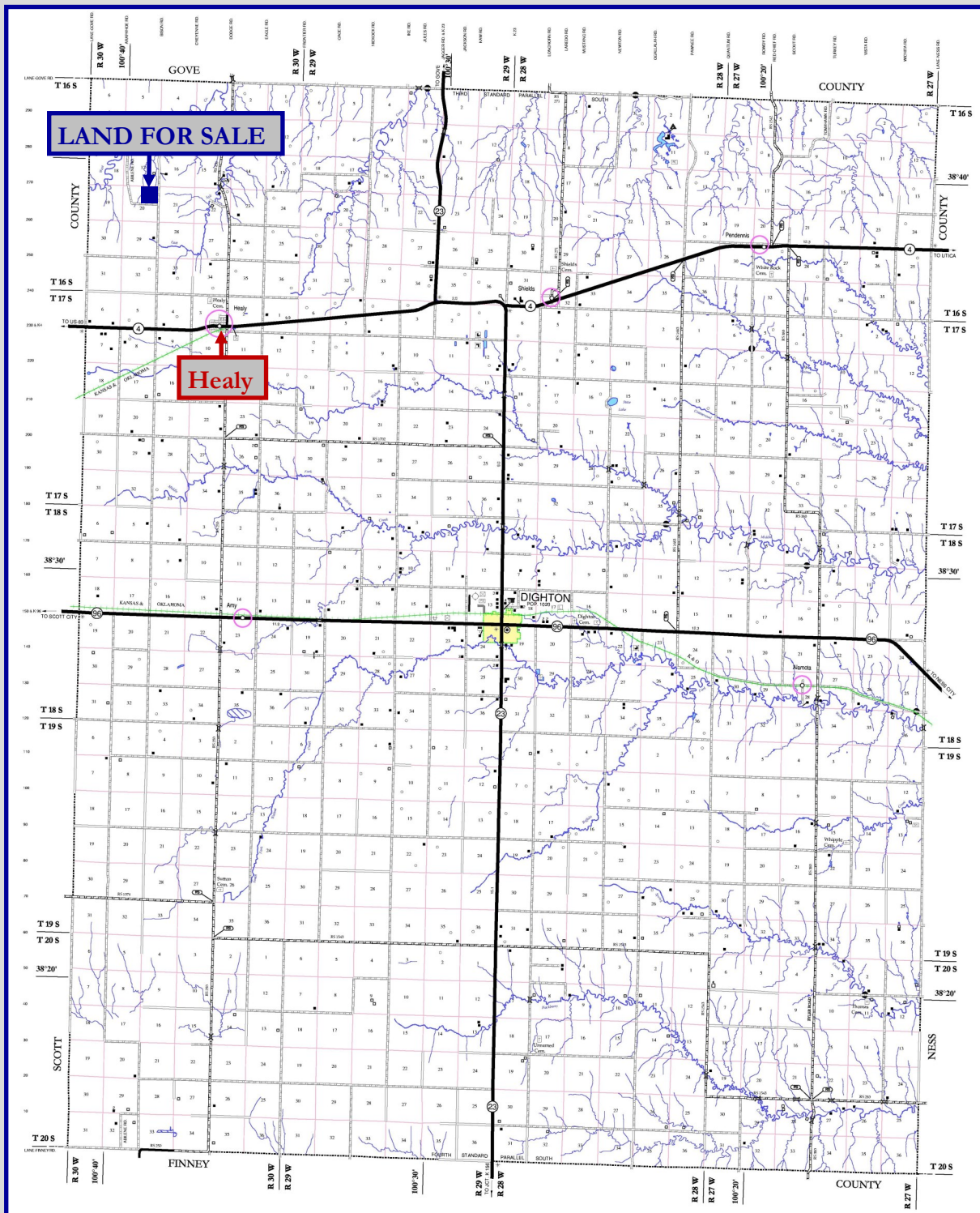
#### Asking Price

\$450,000

# 160 Acres of Pasture with Pens & Working Facility

## Northeast Quarter 20-16-30

### Lane County, Kansas





# 160 Acres of Pasture with Pens & Working Facility

## Northeast Quarter 20-16-30

### Lane County, Kansas

Aerial Map



Maps Provided By:  
**surety**  
CUSTOMIZED ONLINE MAPPING  
© AgriData, Inc. 2023 www.AgriDataInc.com

Boundary Center: 38° 39' 11.52, -100° 39' 21.32

20-16S-30W  
Lane County  
Kansas

0ft 820ft 1640ft



6/10/2024

Field borders provided by Farm Service Agency as of 5/21/2008.

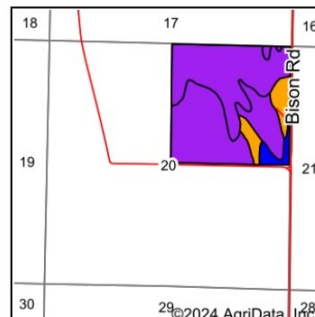
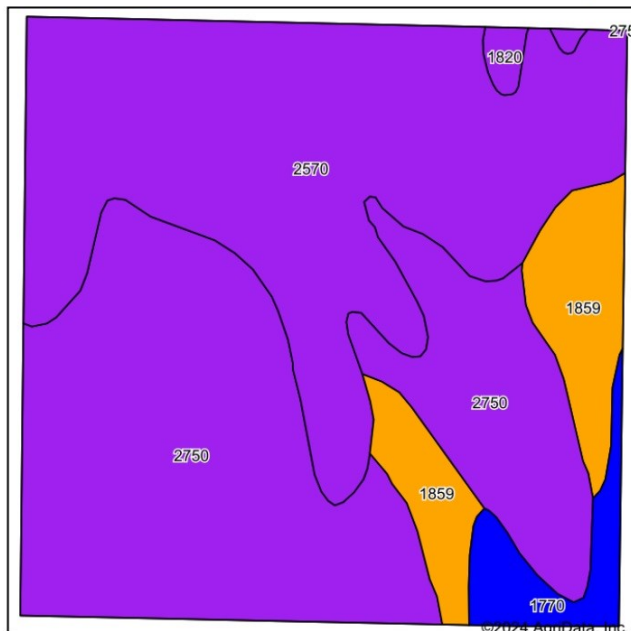


# 160 Acres of Pasture with Pens & Working Facility

## Northeast Quarter 20-16-30

### Lane County, Kansas

Soils Map



State: Kansas  
County: Lane  
Location: 20-16S-30W



Maps Provided By:  
**surety**  
CUSTOMIZED ONLINE MAPPING  
© AgriData, Inc. 2023 www.AgriDataInc.com



Soils data provided by USDA and NRCS.

Area Symbol: KS101, Soil Area Version: 21														
Code	Soil Description	Acres	Percent of field	Non-Irr Class Legend	Non-Irr Class *c	Irr Class *c	Alfalfa hay Irrigated Tons	Corn Irrigated Bu	Corn silage Irrigated Tons	Grain sorghum Bu	Grain sorghum Irrigated Bu	Winter wheat Bu	Winter wheat Irrigated Bu	*n NCCPI Soybeans
2750	Penden clay loam, 7 to 15 percent slopes	67.48	44.5%		Vle	Vle								57
2570	Canlon-Campus complex, 1 to 40 percent slopes	63.86	42.0%		Vle	Vls								32
1859	Ulysses silt loam, 3 to 6 percent slopes	13.69	9.0%		Ille	Ille				20		17		50
1770	Richfield-Ulysses silt loams, 1 to 3 percent slopes	5.61	3.7%		lle	lle	5	150	6	34	117	29	47	65
1820	Schamber gravelly sandy loam, 5 to 25 percent slopes	1.24	0.8%		Vlls									2
Weighted Average					5.59	*-	0.2	5.5	0.2	3.1	4.3	2.6	1.7	*n 45.7

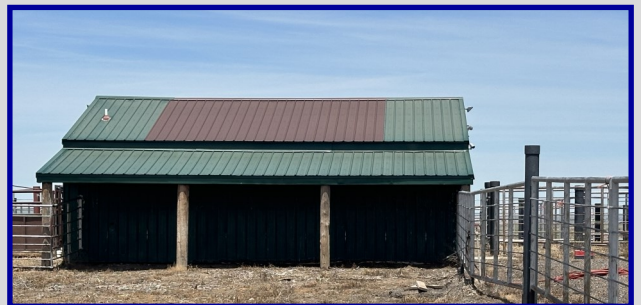
\*n: The aggregation method is "Weighted Average using all components"

\*c: Using Capabilities Class Dominant Condition Aggregation Method

\*- Irr Class weighted average cannot be calculated on the current soils data due to missing data.

Soils data provided by USDA and NRCS.

160 Acres of Pasture with Pens & Working Facility  
Northeast Quarter 20-16-30  
Lane County, Kansas





# 160 Acres of Pasture with Pens & Working Facility

## Northeast Quarter 20-16-30

### Lane County, Kansas



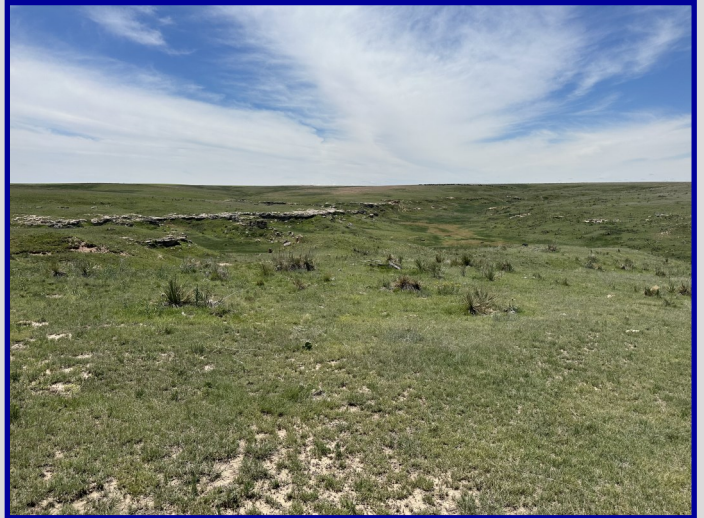


160 Acres of Pasture with Pens & Working Facility  
Northeast Quarter 20-16-30  
Lane County, Kansas





**160 Acres of Pasture with Pens & Working Facility**  
**Northeast Quarter 20-16-30**  
**Lane County, Kansas**





**160 Acres of Pasture with Pens & Working Facility**  
**Northeast Quarter 20-16-30**  
**Lane County, Kansas**

