

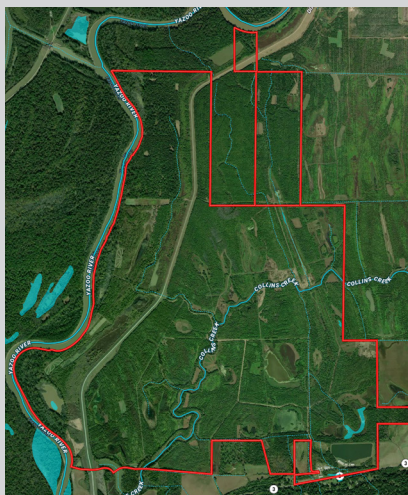
Willow Break

HUNTING CLUB

3,642+/-
Acres of Prime Duck and Deer
Hunting in Warren County, MS

- 31 Total Shares
- 1,000 SF 2 Bed/1 Bath Condo With Appliances Included
- \$5,000 Yearly Dues (No Debt on Club)
- 90± acres of food plots
- 40 Shooting Condos
- 24 Duck Holes
- 4-5 Wells and Power Units
- 3,500+/- SF Main Lodge for Special Events and Gatherings
- Managed Lake Stocked with Bass and Bream
- Landing Strip for Small Aircraft
- Dog Kennels
- Personal Metal Storage Container with Share

One Equity Share of Willow Break is \$539,999



**Call Houston Primos today for
 information or to schedule a private showing!**

Houston Primos, Jr., Broker 601.906.4467

Houston@primoslandandhomes.com



Information is believed to be accurate but not guaranteed.

One Equity Share of Willow Break

Welcome to Willow Break in Warren County, MS! With 32 shares total, and over 3,642± acres of professionally managed wildlife habitat for deer and ducks in this MS Delta Hunting Club.

This is a hunter's dream! The property has a beautiful 3,500 SF main lodge with an array of mounted animals and fantastic views of the lake. This lodge would be perfect for hosting special events and gatherings.

The lake is managed for bass and bream with structures in place for great fishing. There are 90± acres of food plots, 40+/- shooting condos for deer hunting, and 24 duck holes that can maintain water from the strategically placed four wells to create an ideal duck habitat. Kennels are also available if needed for your dog. There is a well-planned road system that makes access to all areas of this property a breeze. There is a landing strip for small aircraft that is available. Everything has been thought of, just bring your gear and come on!

This share includes a 1,000+/- sq ft condo. It features two bedrooms, one bathroom, and a kitchen with all appliances remaining. Each condo has a patio to sit outside and enjoy the scenery

and relax. There is also a metal storage container that goes with the share.

Willow Break has so many amenities in this beautiful camp setting that you and your family can enjoy from day one. \$5,000 in yearly dues (payable in June or January) and four work days or forty hours per year required. Whether you are hunting or just wanting to get away and relax with the view of the lake and see the abundant wildlife, you can't go wrong. Shares in this club do not become available often. Give Houston a call to join today!



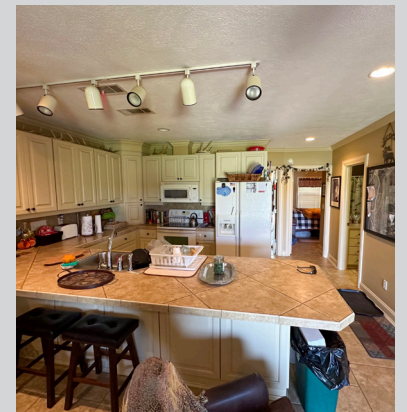
**Call Houston Primos today for
information or to schedule a private showing!**

Houston Primos, Jr., Broker 601.906.4467

Houston@primoslandandhomes.com



Information is believed to be accurate but not guaranteed.



Call Houston Primos today for
information or to schedule a private showing!

Houston Primos, Jr., Broker 601.906.4467

Houston@primoslandandhomes.com



Information is believed to be accurate but not guaranteed.



**Call Houston Primos today for
information or to schedule a private showing!**

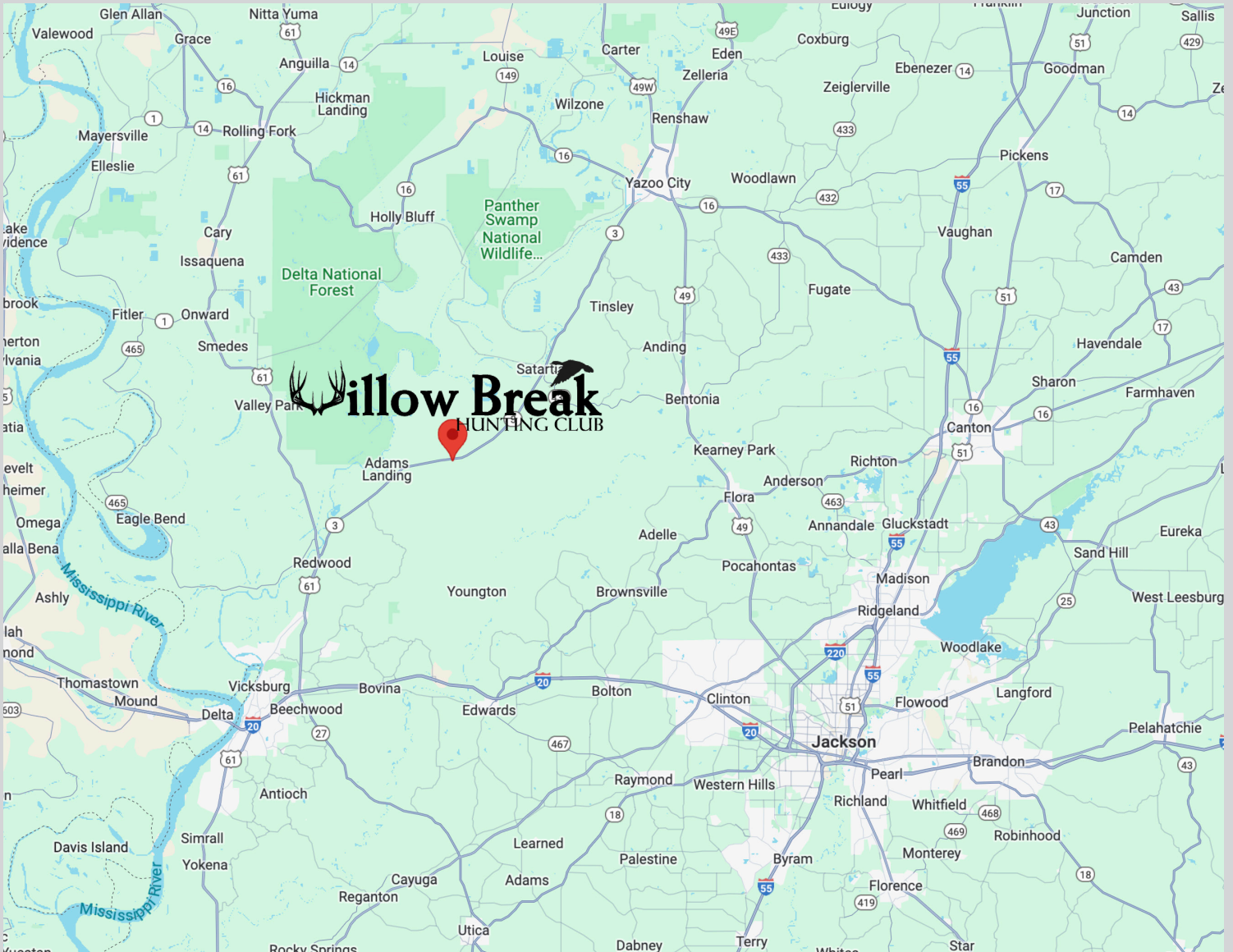
Houston Primos, Jr., Broker 601.906.4467

Houston@primoslandandhomes.com



Information is believed to be accurate but not guaranteed.

MAP DIRECTIONS TO WILLOW BREAK



Directions from the Intersection of Hwy 61 and Hwy 3 in Redwood, MS: Travel North on Hwy 3 for 12 miles. The entrance to Willow Break will be on your left.
9408 Hwy 3 Redwood, MS 39156



Call Houston Primos today for
information or to schedule a private showing!

Houston Primos, Jr., Broker 601.906.4467

Houston@primoslandandhomes.com



Information is believed to be accurate but not guaranteed.