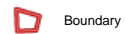
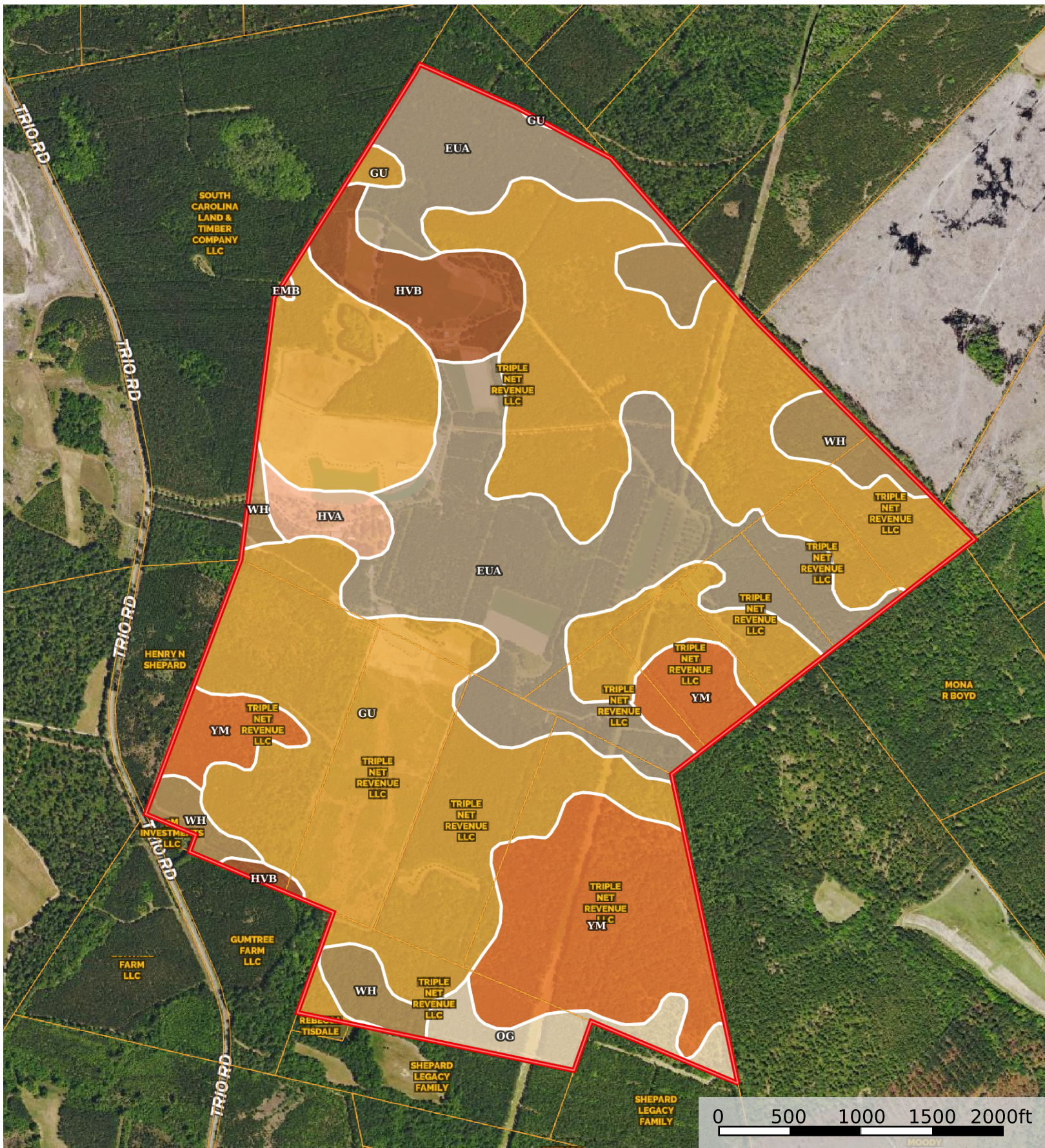


Williamsburg County, South Carolina, 500 AC +/-



|  Boundary 534.77 ac

SOIL CODE	SOIL DESCRIPTION	ACRES	%	CPI	NCCPI	CAP
Gu	Gourdin loam	274.31	51.29	0	37	6w
EuA	Eunola loamy sand, 0 to 2 percent slopes	121.98	22.81	0	69	2w
Ym	Yemassee sandy loam	69.09	12.92	0	71	2w
Wh	Wahee sandy loam	27.24	5.09	0	68	2w
HvB	Hornsville sandy loam, 2 to 6 percent slopes	22.03	4.12	0	69	2e
Og	Ogeechee fine sandy loam	12.3	2.3	0	47	3w
HvA	Hornsville sandy loam, 0 to 2 percent slopes	7.54	1.41	0	69	2w
EmB	Emporia loamy sand, 2 to 6 percent slopes	0.28	0.05	0	75	2e
TOTALS		534.77(*)	100%	-	52.29	4.07









(\*) Total acres may differ in the second decimal compared to the sum of each acreage soil. This is due to a round error because we only show the acres of each soil with two decimal.

## Capability Legend

Increased Limitations and Hazards

Decreased Adaptability and Freedom of Choice Users

Land, Capability

								
	1	2	3	4	5	6	7	8
'Wild Life'	•	•	•	•	•	•	•	•
Forestry	•	•	•	•	•	•	•	
Limited	•	•	•	•	•	•	•	
Moderate	•	•	•	•	•	•		
Intense	•	•	•	•	•			
Limited	•	•	•	•				
Moderate	•	•	•					
Intense	•	•						
Very Intense	•							

## Grazing Cultivation

(c) climatic limitations (e) susceptibility to erosion

(s) soil limitations within the rooting zone (w) excess of water