

# RECREATIONAL / TIMBER TRACT

## **85 $\pm$ AC TO 570 $\pm$ AC**

### **MAYO, LAFAYETTE CO., FLORIDA**



- 570+/- acres perfect for a recreational or timber tract.
- Offered as a 232ac and 336ac tracts. Buy some or all.
  - 1 mile+ paved road frontage on SR 51.
- Post Idalia timber cruise indicates timber value of \$717,000.
- A1 (1 du per 40 ac), A2 (1 du per 10 ac), and A3 (1 du per 5ac) zoning classifications. NO Deed Restrictions.
  - 20 minutes to Steinhatchee, 1 hour to Gainesville, 1.5 hours to Tallahassee.

Lot #	Acres	Price	\$/ac
1	232.00	\$904,800	\$3,900
2	336.00	\$1,176,000	\$3,500
ALL	570.00	\$1,707,150	\$2,995

Data contained herein is for informational purposes only. Buyer must perform their own inspections on the land being offered for sale in this brochure.

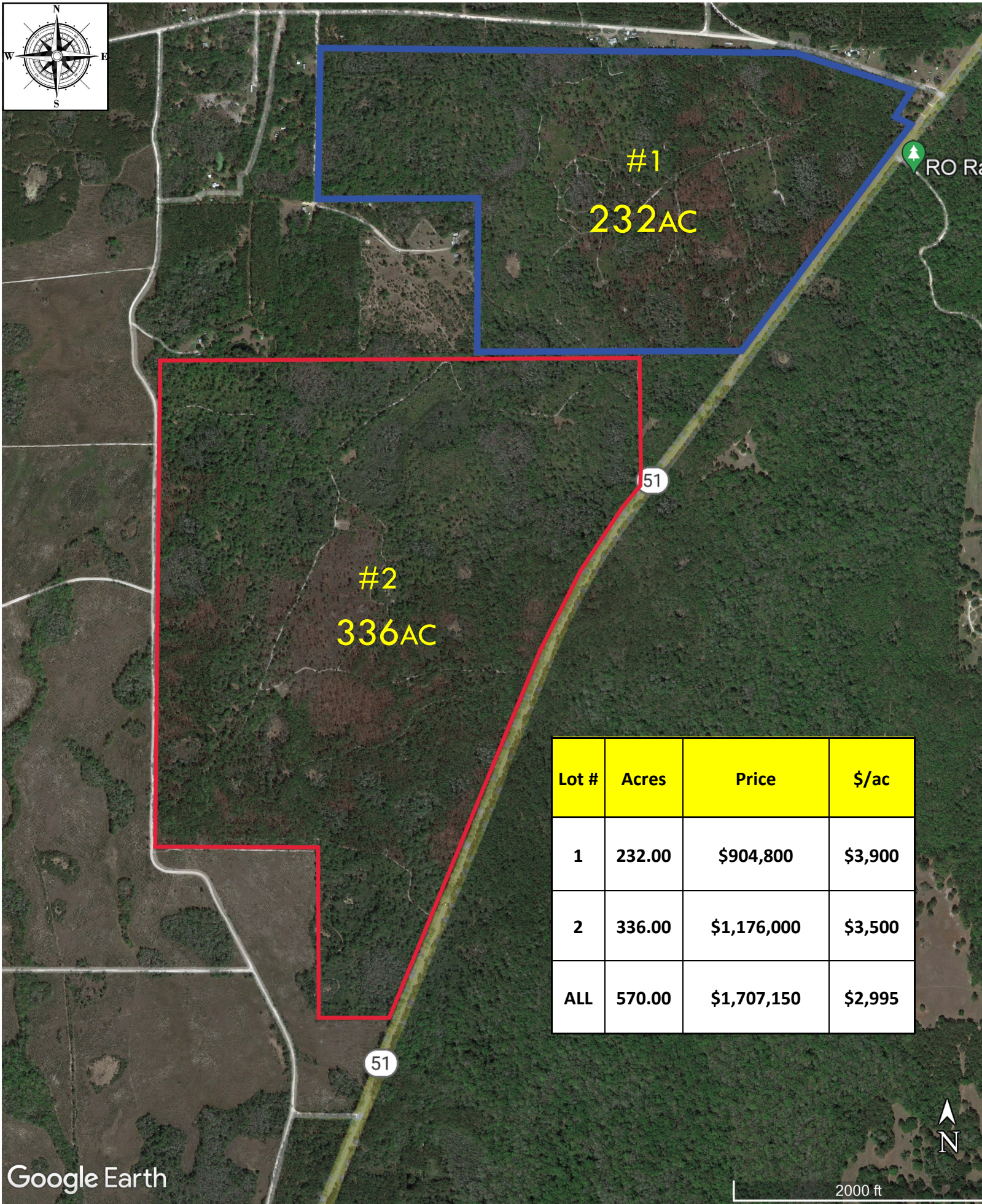
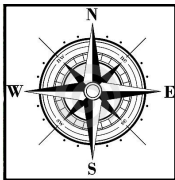


**Phone: (352) 401-3755**

**Mobile: (352) 459-5283**

**[www.mcbrideland.com](http://www.mcbrideland.com)**

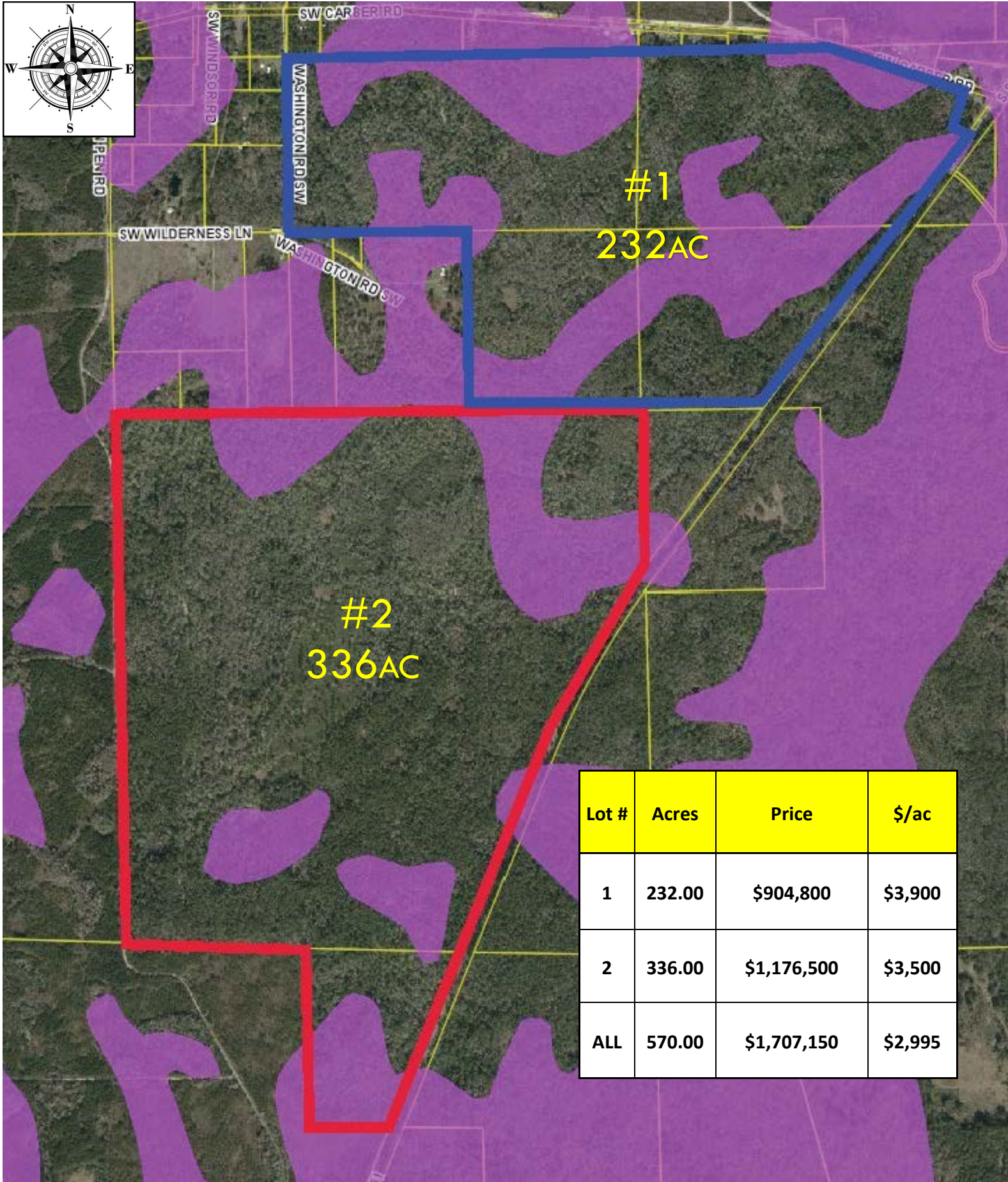
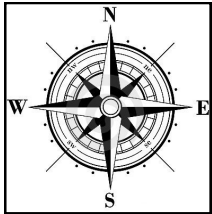




Lot #	Acres	Price	\$/ac
1	232.00	\$904,800	\$3,900
2	336.00	\$1,176,000	\$3,500
ALL	570.00	\$1,707,150	\$2,995



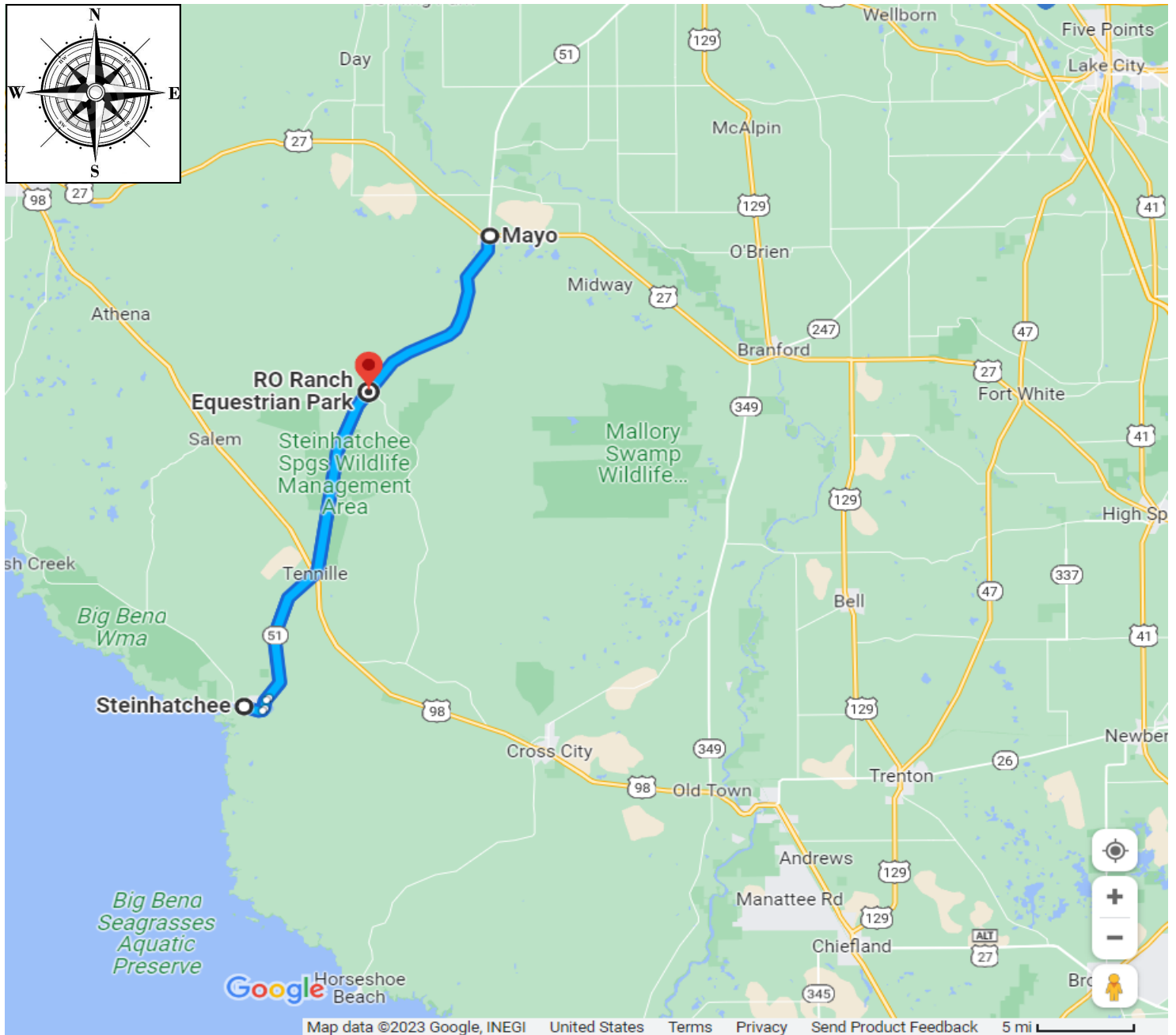




Lot #	Acres	Price	\$/ac
1	232.00	\$904,800	\$3,900
2	336.00	\$1,176,500	\$3,500
ALL	570.00	\$1,707,150	\$2,995

# DIRECTIONS

## RO RANCH • SE LAFAYETTE CO., FL



### FROM MAYO:

- South on SR-51
- Property on right .3mi past SR-51 and CR-357 intersection, just past fire observation tower.

### From Steinhatree:

- North on SR-51
- Property on left 10.8mi after crossing over US-98/US-19, just before fire observation tower.

**SHOWN BY APPOINTMENT ONLY**