



T R O P H Y
PROPERTIES AND AUCTION
LAND | RECREATIONAL | RESIDENTIAL

95± Acres Prime Missouri River Bottoms Farmland for Sale - Saline County

www.TrophyPA.com • (855) 573-5263 • leads@trophyapa.com



PROPERTY ADDRESS:

00 397th Trail
Miami, MO 65344

PRICE: \$902,500

ACRES: 95±

COUNTY: Saline

PROPERTY HIGHLIGHTS:

- 95± acres
- 80± acres tillable ground
- Missouri River Bottoms
- 60% highly tillable Haynie-Waldrone complex

PROPERTY DESCRIPTION:

Located in the fertile Missouri River valley, this 95± acre farm presents a rare opportunity for agricultural success, with 80± acres dedicated to tillable land. The nutrient-rich soil, boasting silty clay and silt loam types, ensures optimal conditions for high yields and healthy harvests year after year. Whether you're a seasoned farmer looking to expand operations or an investor seeking a promising venture, this property offers the opportunity for agricultural prosperity. Don't let this chance to own a piece of prime farmland in such a coveted location slip away.

Seller is willing to rent back farming rights at \$200 per acre for three years.



PRESENTED BY:

JODY GRAFF

Land & Habitat Specialist

M: (660) 973-1606

P: (855) 573-5263 x703

E: jgraff@trophyapa.com

KAMRON GARBER

Land Specialist

M: (660) 572-5006

P: (855) 573-5263 x729

E: kgarber@trophyapa.com

Trophy Properties and Auction

640 Cepi Drive, Suite 100

Chesterfield, MO 63005

www.Trophyapa.com

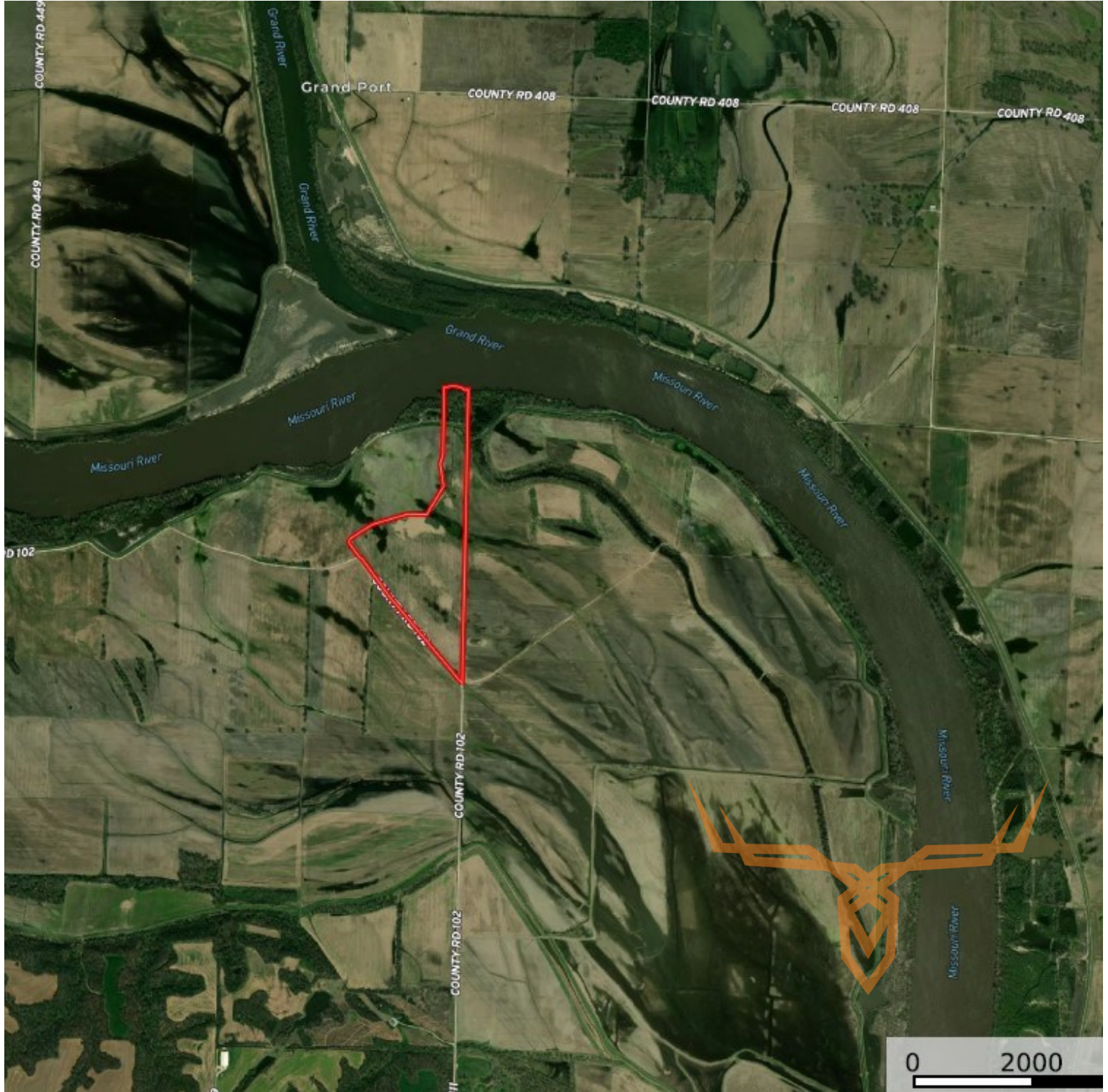
leads@trophyapa.com



95± Acres Prime Missouri River Bottoms Farmland for Sale - Saline County

T R O P H Y
PROPERTIES AND AUCTION
LAND | RECREATIONAL | RESIDENTIAL

www.TrophyPA.com • (855) 573-5263 • leads@trophy.com



Broker does not guarantee the accuracy of sq. ft., lot size, or other information, buyer is advised to independently verify the accuracy of information through personal inspection and with appropriate professionals