



T R O P H Y
PROPERTIES AND AUCTION
LAND | RECREATIONAL | RESIDENTIAL

249± Acre Missouri Cattle Farm Property for Sale - Monroe County

www.TrophyPA.com • (855) 573-5263 • leads@trophyapa.com



PROPERTY ADDRESS:

23091 Monroe Road 1181
Madison, MO 65263

PRICE: \$1,369,500

ACRES: 249±

COUNTY: Monroe

PROPERTY HIGHLIGHTS:

- Excellent cattle farm
- Very good fences
- Nearly a mile of Middle Fork of the Salt River frontage
- Rotational grazing
- Combo of pasture, hay, and hunting
- Several ponds
- Newer 5 strand barbed wire fences
- Electric on property
- Pipe fencing and cattle pen area

PROPERTY DESCRIPTION:

Expand your existing cattle operation with this fantastic opportunity! The property includes a high-quality cattle farm with excellent fences and nearly a mile of frontage on the Middle Fork of the Salt River. It already has a rotational grazing system in place and features a combination of pasture, hay, and hunting grounds, along with several ponds. The property is set up with newer 5-strand barbed wire fences, electricity, some pipe fencing, and a designated cattle pen area. This is a superb cattle farm!



PRESENTED BY:

MIKE SHARPE

Land Specialist

M: (573) 721-0944

P: (855) 573-5263 x753

E: msharpe@trophyapa.com

Trophy Properties and Auction

640 Cepi Drive

Suite 100

Chesterfield, MO 63005

www.Trophyapa.com

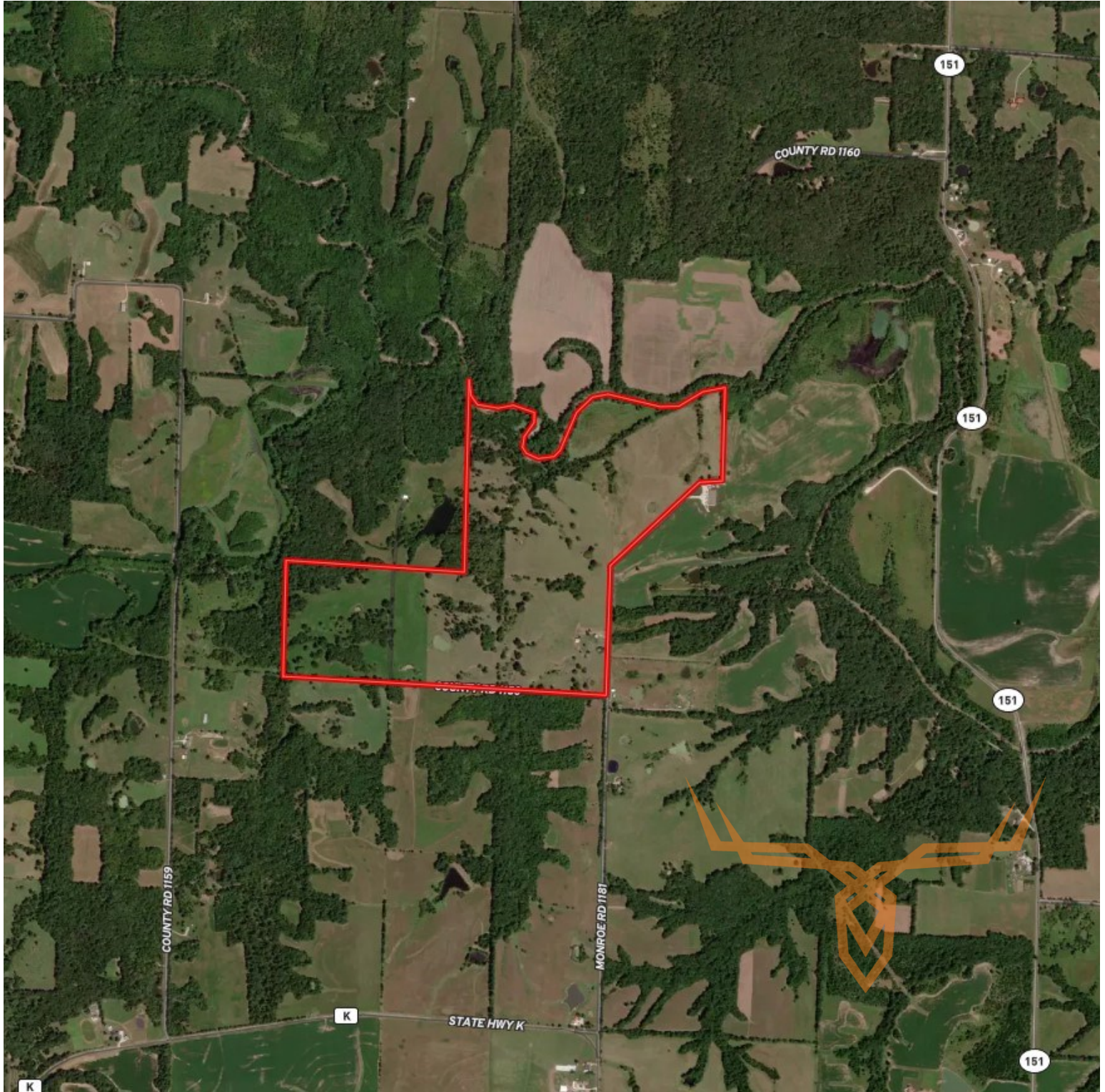
leads@trophyapa.com



T R O P H Y
PROPERTIES AND AUCTION
LAND | RECREATIONAL | RESIDENTIAL

249± Acre Missouri Cattle Farm Property for Sale - Monroe County

www.TrophyPA.com • (855) 573-5263 • leads@trohypa.com



Broker does not guarantee the accuracy of sq. ft., lot size, or other information, buyer is advised to independently verify the accuracy of information through personal