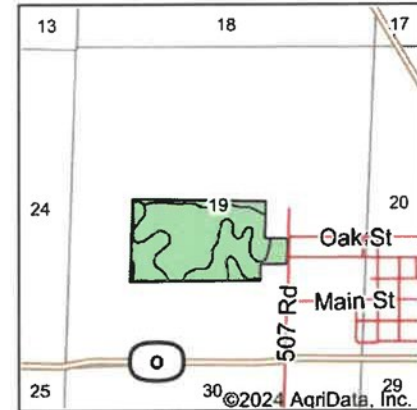
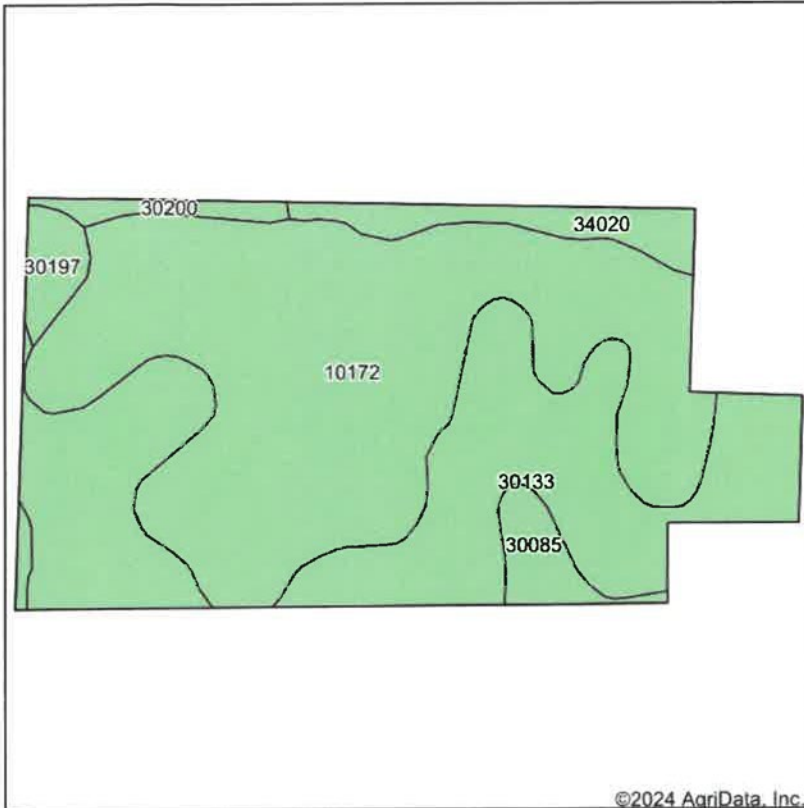


Soils Map



State: **Missouri**
 County: **Gentry**
 Location: **19-64N-31W**
 Township: **Bogle**
 Acres: **71.94**
 Date: **6/24/2024**

United
Country
NELSON REAL ESTATE

Maps Provided By:

surety
 CUSTOMIZED ONLINE MAPPING
 © AgriData, Inc. 2023 www.AgriDataInc.com



Soils data provided by USDA and NRCS.

Area Symbol: MO075, Soil Area Version: 26

Code	Soil Description	Acres	Percent of field	Non-Irr Class *c
10172	Shelby clay loam, 9 to 14 percent slopes, moderately eroded	38.17	53.1%	IIIe
30133	Lamoni clay loam, 5 to 9 percent slopes, eroded	25.57	35.5%	IIIe
34020	Colo silty clay loam, drainageway, 2 to 5 percent slopes, frequently flooded	3.09	4.3%	IIw
30085	Grundy silt loam, 2 to 5 percent slopes	2.40	3.3%	Ile
30197	Shelby loam, 14 to 18 percent slopes	1.58	2.2%	IVe
30200	Shelby loam, 9 to 14 percent slopes	1.13	1.6%	IIIe
Weighted Average				2.95

*c: Using Capabilities Class Dominant Condition Aggregation Method