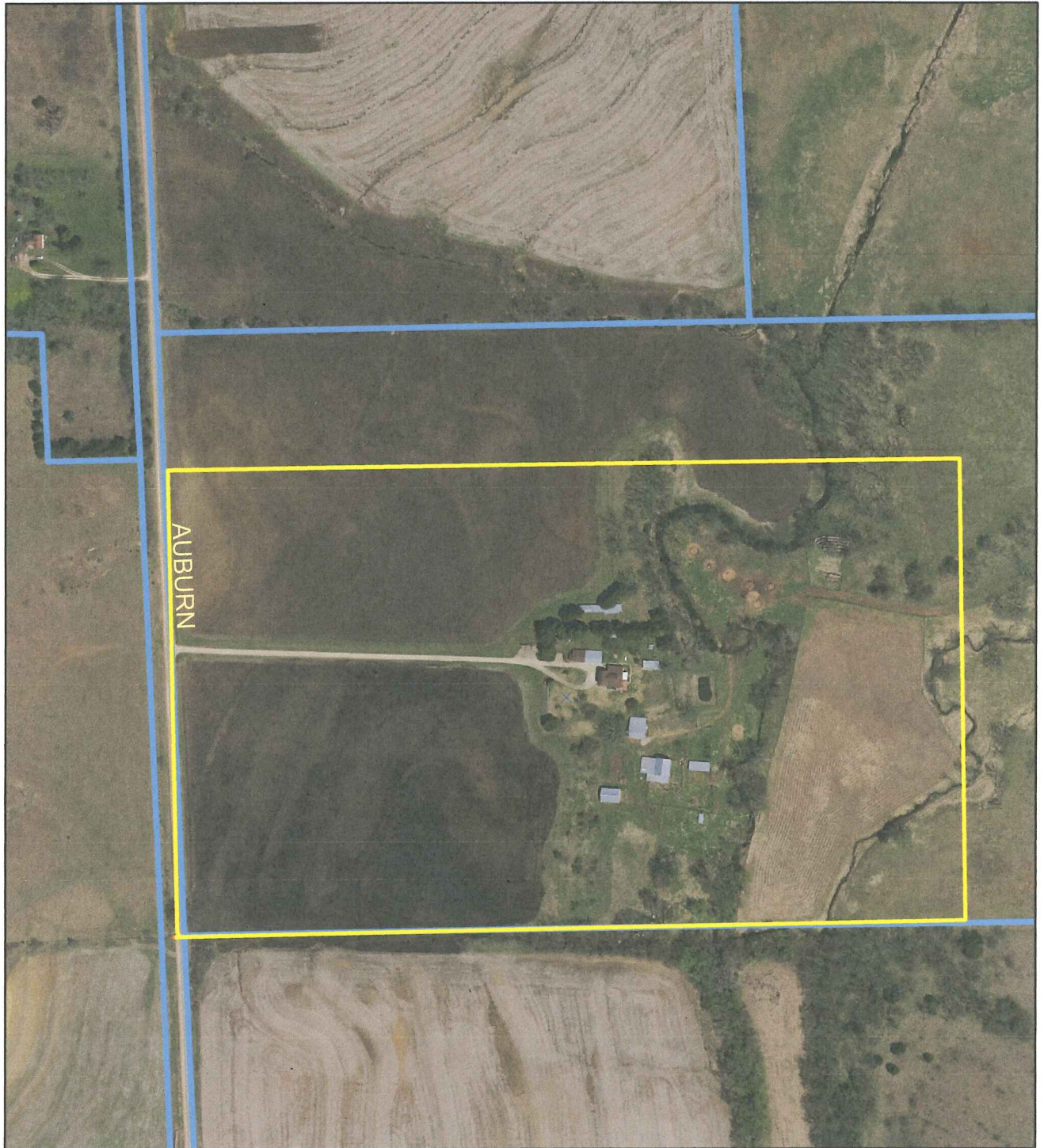


# Property Information Map



*Osage County Land Development Office*  
PO Box 221  
Lyndon, Ks 66451  
785-828-3347 (office) 785-828-4749 (fax)



All maps created in our office are for "As Shown Only", they are not intended for easements nor are they a legal survey. All GIS information remains the property of the Osage County GIS Mapping & Drawing Dept and should not be sold to otherwise made available to any Third Party.