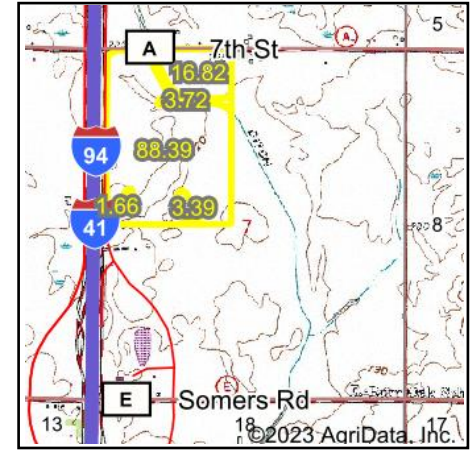


Wetlands Map



State: **Wisconsin**
 Location: **7-2N-22E**
 County: **Kenosha**
 Township: **Somers**
 Date: **11/7/2023**

PC PEOPLES
 COMPANY
 INTEGRATED LAND SOLUTIONS

Maps Provided By:
surety
 CUSTOMIZED ONLINE MAPPING
 © AgriData, Inc. 2023 www.AgriDataInc.com



0ft 669ft 1339ft

Classification Code	Type	Acres
PEM1C	Freshwater Emergent Wetland	5.34
PUSC	Freshwater Pond	4.66
PSS1/EM1F	Freshwater Forested/Shrub Wetland	0.93
R5UBH	Riverine	0.93
PFO1/EM1C	Freshwater Forested/Shrub Wetland	0.49
Total Acres		12.35

Data Source: National Wetlands Inventory website. U.S. DoI, Fish and Wildlife Service, Washington, D.C. <http://www.fws.gov/wetlands/>