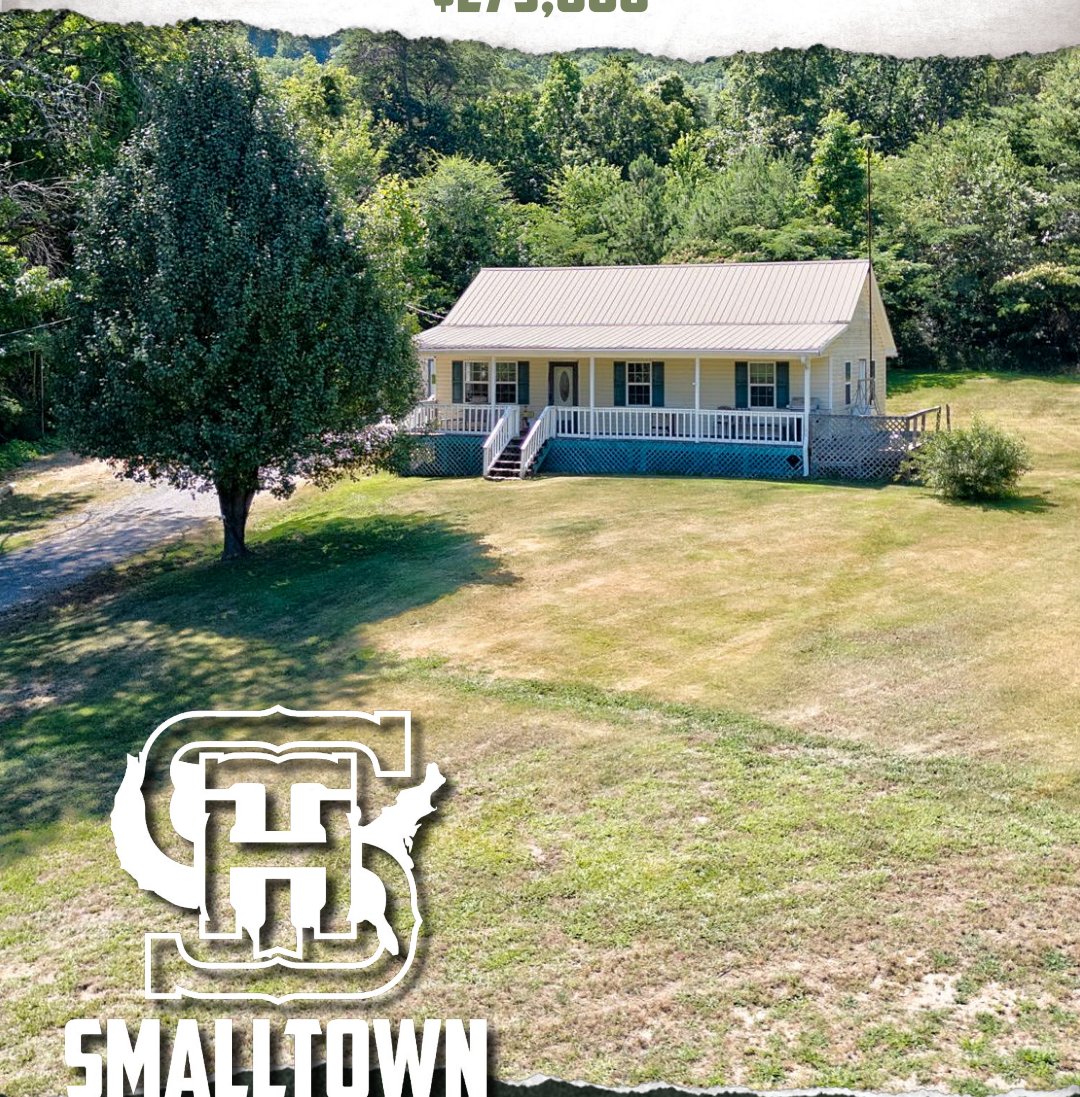


HOME ON 2.69± ACRES WHITFIELD COUNTY, GA

\$275,000



SMALLTOWN
HUNTING PROPERTIES
& REAL ESTATESM

OFFICE (769) 888-2522

THE WHITFIELD 2.69

PROPERTY PROFILE

LOCATION:

- 238 Langston Way
Dalton, GA 30720
- 12± Miles to Ringgold
- 24± Miles to Calhoun
- 28± Miles to Chattanooga, TN
- 92± Miles to Atlanta

COORDINATES:

- 34.82038, -85.00088

PROPERTY USE:

- Single Family Residential
- Commercial

PROPERTY INFORMATION:

- 2.69± Acres
- 3 Bedroom/1 Bath Home
- Living Room/Kitchen Combo
- Mostly Level Lot
- Shed/Shop

TAX INFORMATION:

- \$62.33
- 12-082-03-000



SMALLTOWN
HUNTING PROPERTIES
& REAL ESTATESM

JUSTIN HASTY

LAND SPECIALIST

C: 706-671-4554

O: 769-888-2522

justin@smalltownproperties.com

P.O. Box 340 - Rocky Face, GA 30740

smalltownproperties.com

Information is believed to be accurate but not guaranteed.



WELCOME TO THE WHITFIELD 2.69

GET CREATIVE HERE ON LANGSTON WAY IN DALTON, GEORGIA! This 2.69± acre Whitfield County property is zoned C-2 but is currently being used as a single family residence. The three bedroom, one bathroom home could be converted into an office/business. The lot is fairly level, mostly cleared and has a small storage shed.

Call Justin Hasty today to discuss the options.



SMALLTOWN
HUNTING PROPERTIES
& REAL ESTATESM

JUSTIN HASTY

LAND SPECIALIST

C: 706-671-4554

O: 769-888-2522

justin@smalltownproperties.com

P.O. Box 340 - Rocky Face, GA 30740

smalltownproperties.com

Information is believed to be accurate but not guaranteed.



HOME ON 2.69± ACRES WHITFIELD COUNTY, GEORGIA



SMALLTOWN
HUNTING PROPERTIES
& REAL ESTATESM

JUSTIN HASTY

LAND SPECIALIST

C: 706-671-4554

O: 769-888-2522

justin@smalltownproperties.com

P.O. Box 340 - Rocky Face, GA 30740

smalltownproperties.com

Information is believed to be accurate but not guaranteed.



SMALLTOWN
HUNTING PROPERTIES
& REAL ESTATESM

JUSTIN HASTY

LAND SPECIALIST

C: 706-671-4554

O: 769-888-2522

justin@smalltownproperties.com

P.O. Box 340 - Rocky Face, GA 30740

smalltownproperties.com

Information is believed to be accurate but not guaranteed.

HOME ON 2.69± ACRES WHITFIELD COUNTY, GEORGIA



SMALLTOWN
HUNTING PROPERTIES
& REAL ESTATESM

JUSTIN HASTY

LAND SPECIALIST

C: 706-671-4554

O: 769-888-2522

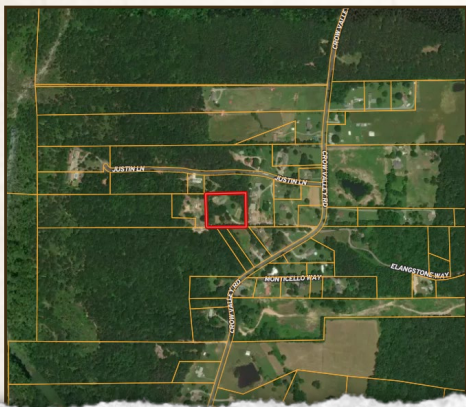
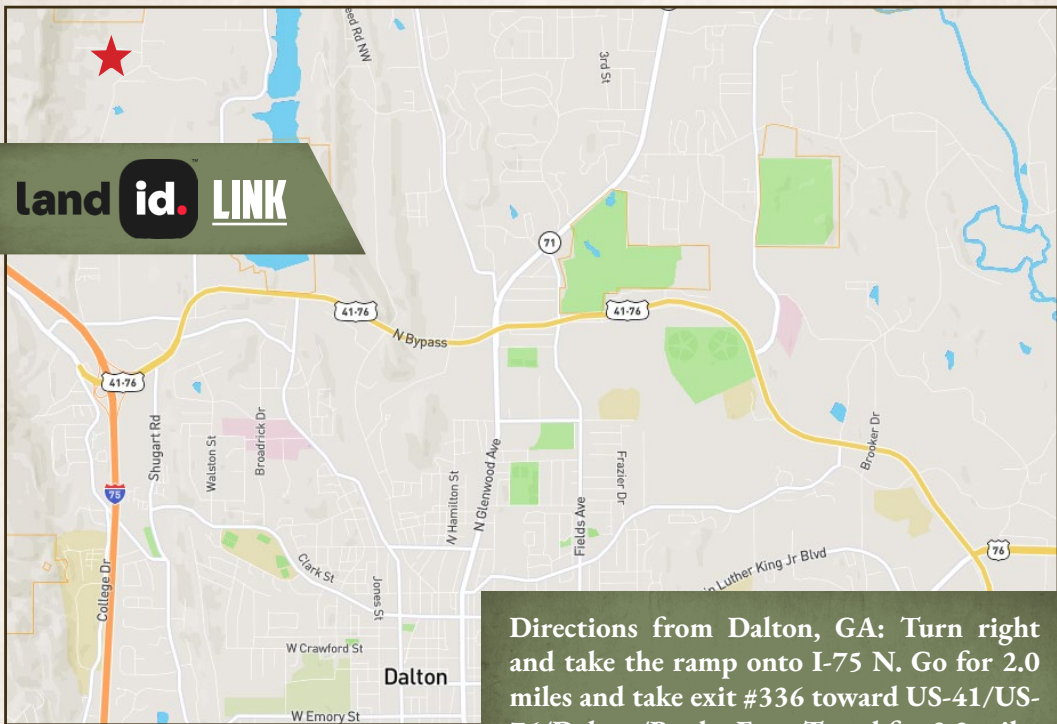
justin@smalltownproperties.com

P.O. Box 340 - Rocky Face, GA 30740

smalltownproperties.com

Information is believed to be accurate but not guaranteed.

land **id.** LINK



Directions from Dalton, GA: Turn right and take the ramp onto I-75 N. Go for 2.0 miles and take exit #336 toward US-41/US-76/Dalton/Rocky Face. Travel for 0.3 miles and turn left onto Chattanooga Road (US-41/US-76). Continue for approximately .6 miles and then turn right on Willowdale Drive NW. Go for 476 feet and continue on Willowdale Rd NW. In .2 miles, turn left onto Crow Valley Road NW. Travel 1.6 miles and turn left onto Langston Way. Go for 0.2 miles to the property.

LINK TO GOOGLE MAP DIRECTIONS



SMALLTOWN
HUNTING PROPERTIES
& REAL ESTATESM

JUSTIN HASTY

LAND SPECIALIST

C: 706-671-4554

O: 769-888-2522

justin@smalltownproperties.com

P.O. Box 340 - Rocky Face, GA 30740

smalltownproperties.com

Information is believed to be accurate but not guaranteed.

