

# FOR SALE

**119.17 Acres Ridgeway Church Rd**

**1911 Ridgeway Church Road, Commerce, GA 30529**

**For More Information: Stephen Lovett**

770.297.4807 | slovett@nortoncommercial.com

**Matt McCord**

770.718.5102 | matt@nortoncommercial.com



**Norton Commercial**  
434 Green Street  
Gainesville, GA 30501  
nortoncommercial.com

# NORTON



## EXECUTIVE SUMMARY

# 119.17 Acres Ridgeway Church Rd

1911 RIDGEWAY CHURCH ROAD, COMMERCE, GA 30529



## OFFERING SUMMARY

**Sale Price:** \$4,409,290

**Price / Acre:** \$37,000

**Lot Size:** 119.17 Acres

**Zoning:** C-2

## PROPERTY OVERVIEW

This site presents an excellent opportunity for Commercial or Industrial Development. This site is convenient to Shopping, Restaurants and Entertainment at the Banks Crossing Exit. The Tanger Outlet Malls are a traffic generator for a larger trade area in North Georgia. Visibility off of I-85 will provide any business with recognition and signage. All utilities available to site.

43,600 Cars per day on I-85 (GDOT)

1660 ft frontage on Ridgeway Church Rd

1090+/- Ft Frontage on I-85

Zoned C2 on the City of Commerce but from Industrial Rezoning Opportunity

Approx 8 +/- acre Lake

## LOCATION OVERVIEW

Located just off Exit #147 at the "T" intersection of Ridgeway Church Road and Steven Tanger Blvd. This area has the largest concentration of commercial activity between Metro Atlanta and Greenville, SC. Convenient to I-85 and US 441.

## For More Information:

**Norton Commercial** 434 Green Street Gainesville, GA 30501 [nortoncommercial.com](http://nortoncommercial.com)

**Stephen Lovett**

770.297.4807

[slovett@nortoncommercial.com](mailto:slovett@nortoncommercial.com)

**Matt McCord**

770.718.5102

[matt@nortoncommercial.com](mailto:matt@nortoncommercial.com)

The information contained herein is from other sources believed to be reliable. No independent investigation of the property or the information contained herein has been made, and no representation is made as to the accuracy or completeness thereof. Properties are subject to sale, withdrawal and other sales or rental condition. Terms are subject to errors, and change without notice.

# NORTON



ADDITIONAL PHOTOS

# 119.17 Acres Ridgeway Church Rd

1911 RIDGEWAY CHURCH ROAD, COMMERCE, GA 30529



**For More Information:**

**Norton Commercial** 434 Green Street Gainesville, GA 30501 [nortoncommercial.com](http://nortoncommercial.com)

**Stephen Lovett**

770.297.4807

[slovett@nortoncommercial.com](mailto:slovett@nortoncommercial.com)

**Matt McCord**

770.718.5102

[matt@nortoncommercial.com](mailto:matt@nortoncommercial.com)

The information contained herein is from other sources believed to be reliable. No independent investigation of the property or the information contained herein has been made, and no representation is made as to the accuracy or completeness thereof. Properties are subject to sale, withdrawal and other sales or rental condition. Terms are subject to errors, and change without notice.

# NORTON



ADDITIONAL PHOTOS

# 119.17 Acres Ridgeway Church Rd

1911 RIDGEWAY CHURCH ROAD, COMMERCE, GA 30529



Boundary Survey



Steven Tanger Blvd Intersection



I-85 Frontage

**For More Information:**

**Norton Commercial** 434 Green Street Gainesville, GA 30501 [nortoncommercial.com](http://nortoncommercial.com)

**Stephen Lovett**

770.297.4807

[slovett@nortoncommercial.com](mailto:slovett@nortoncommercial.com)

**Matt McCord**

770.718.5102

[matt@nortoncommercial.com](mailto:matt@nortoncommercial.com)

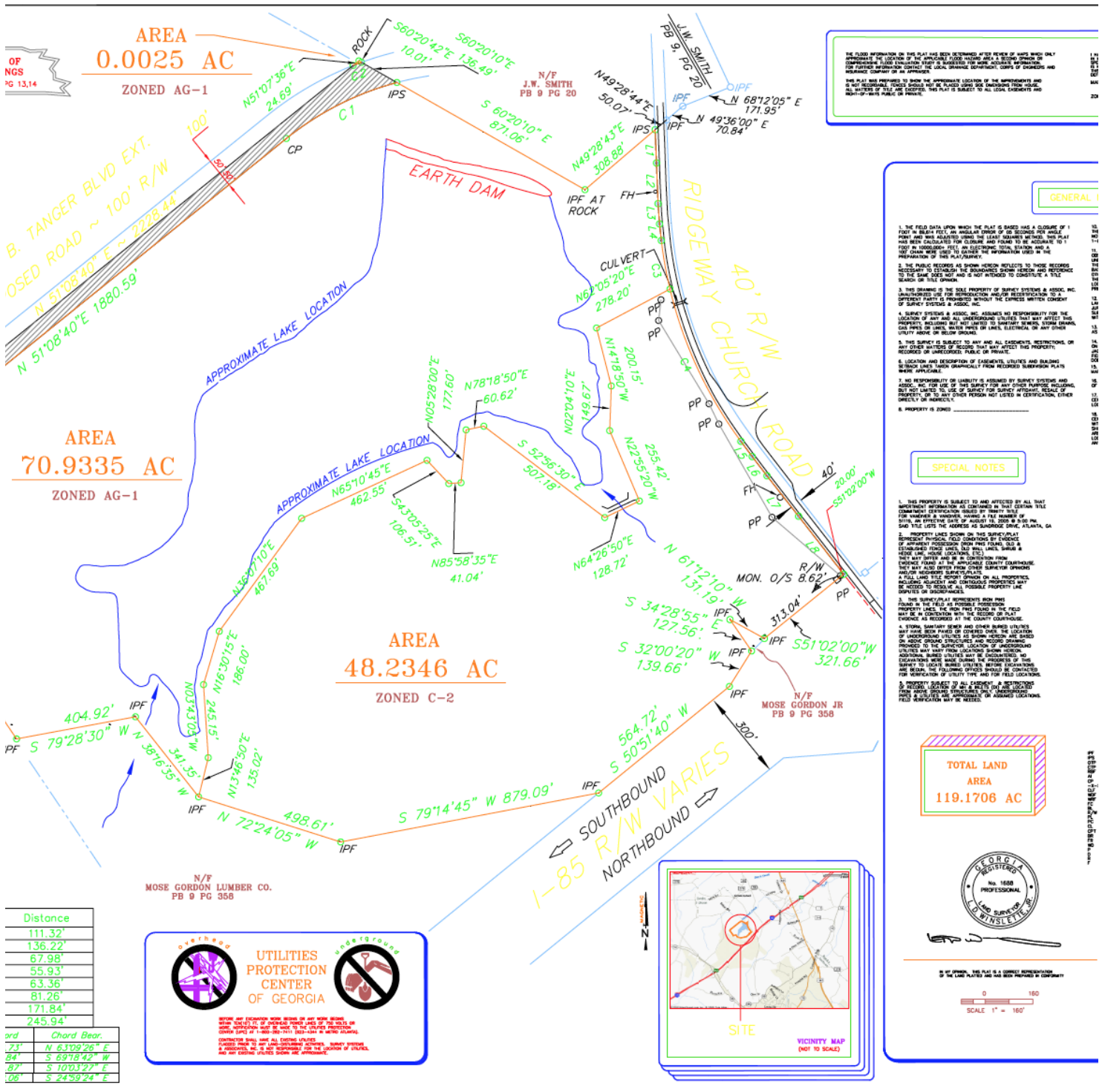
The information contained herein is from other sources believed to be reliable. No independent investigation of the property or the information contained herein has been made, and no representation is made as to the accuracy or completeness thereof. Properties are subject to sale, withdrawal and other sales or rental condition. Terms are subject to errors, and change without notice.

# NORTON



## 119.17 Acres Ridgeway Church Rd

1911 RIDGEWAY CHURCH ROAD, COMMERCE, GA 30529



**For More Information:**

**Norton Commercial** 434 Green Street Gainesville, GA 30501 [nortoncommercial.com](http://nortoncommercial.com)

## Stephen Lovett

## Matt McCord

770.297.4807

770.718.5102

slovett@nortoncommercial.com

matt@nortoncommercial.com

The information contained herein is from other sources believed to be reliable. No independent investigation of the property or the information contained herein has been made, and no representation is made as to the accuracy or completeness thereof. Properties are subject to sale, withdrawal and other sales or rental condition. Terms are subject to errors, and change without notice.

# NORTON



ADDITIONAL PHOTOS

# 119.17 Acres Ridgeway Church Rd

1911 RIDGEWAY CHURCH ROAD, COMMERCE, GA 30529



**I-85 Frontage**



**Aerial**



**Entrance off Ridgeway Church**



**Ridgeway Church Frontage**

**For More Information:**

**Norton Commercial** 434 Green Street Gainesville, GA 30501 [nortoncommercial.com](http://nortoncommercial.com)

**Stephen Lovett**

770.297.4807

[slovett@nortoncommercial.com](mailto:slovett@nortoncommercial.com)

**Matt McCord**

770.718.5102

[matt@nortoncommercial.com](mailto:matt@nortoncommercial.com)

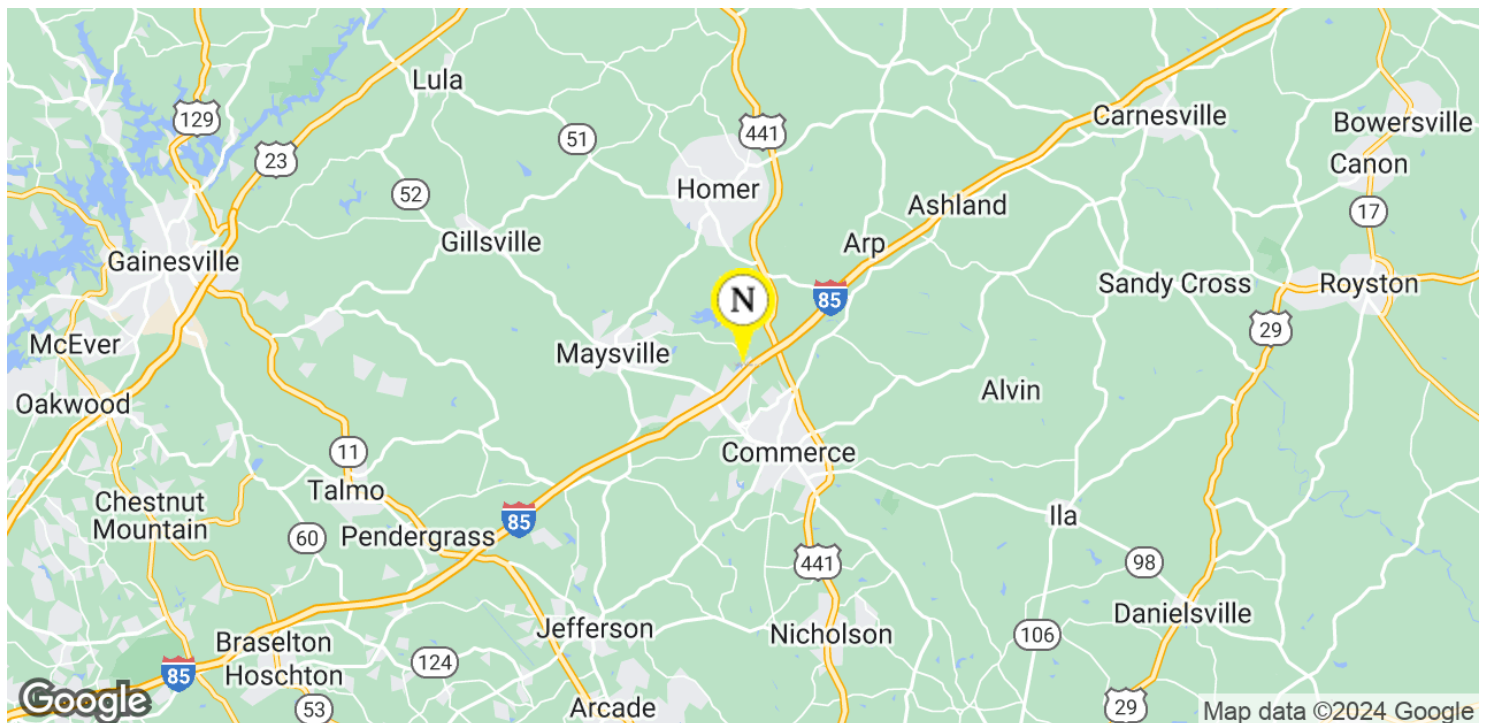
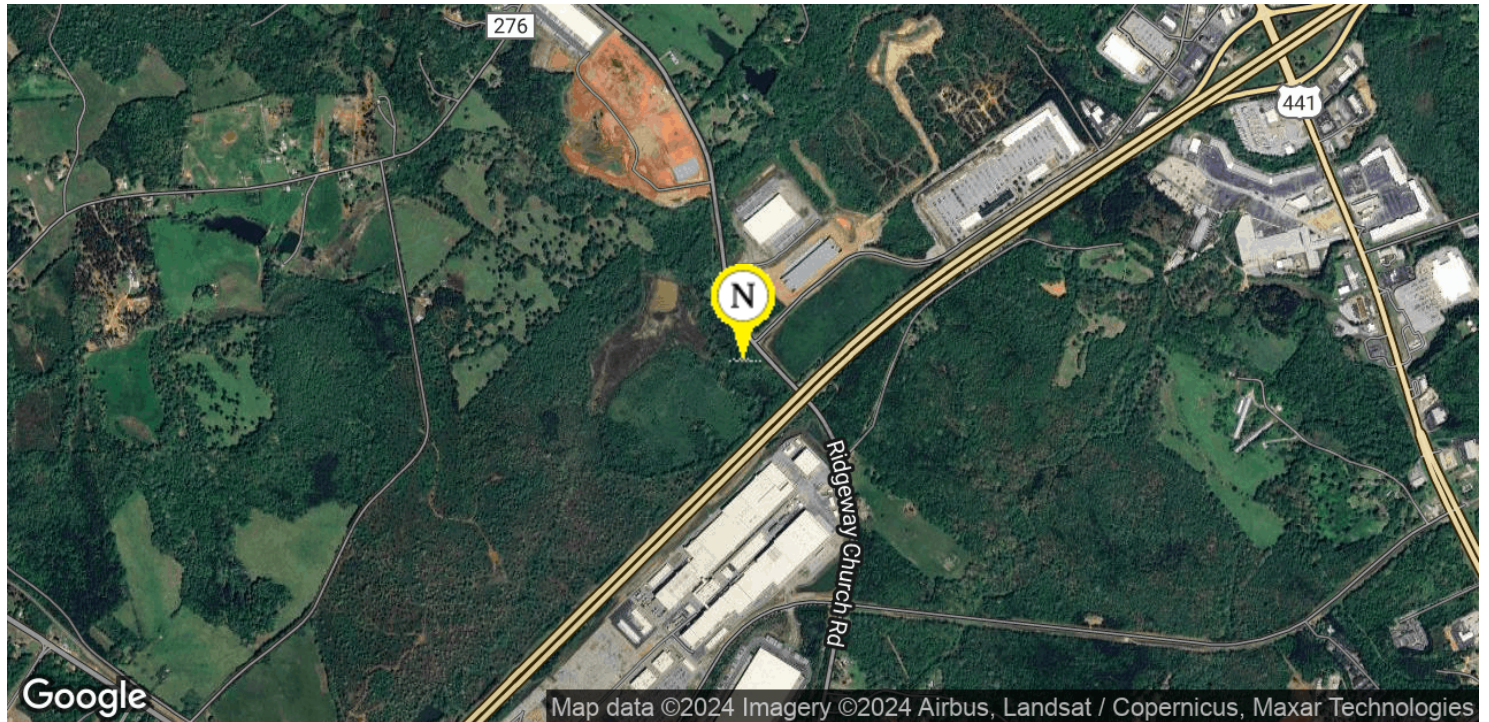
The information contained herein is from other sources believed to be reliable. No independent investigation of the property or the information contained herein has been made, and no representation is made as to the accuracy or completeness thereof. Properties are subject to sale, withdrawal and other sales or rental condition. Terms are subject to errors, and change without notice.

# NORTON



# 119.17 Acres Ridgeway Church Rd

1911 RIDGEWAY CHURCH ROAD, COMMERCE, GA 30529



**For More Information:**

**Norton Commercial** 434 Green Street Gainesville, GA 30501 [nortoncommercial.com](http://nortoncommercial.com)

**Stephen Lovett**

770.297.4807

[slovett@nortoncommercial.com](mailto:slovett@nortoncommercial.com)

**Matt McCord**

770.718.5102

[matt@nortoncommercial.com](mailto:matt@nortoncommercial.com)

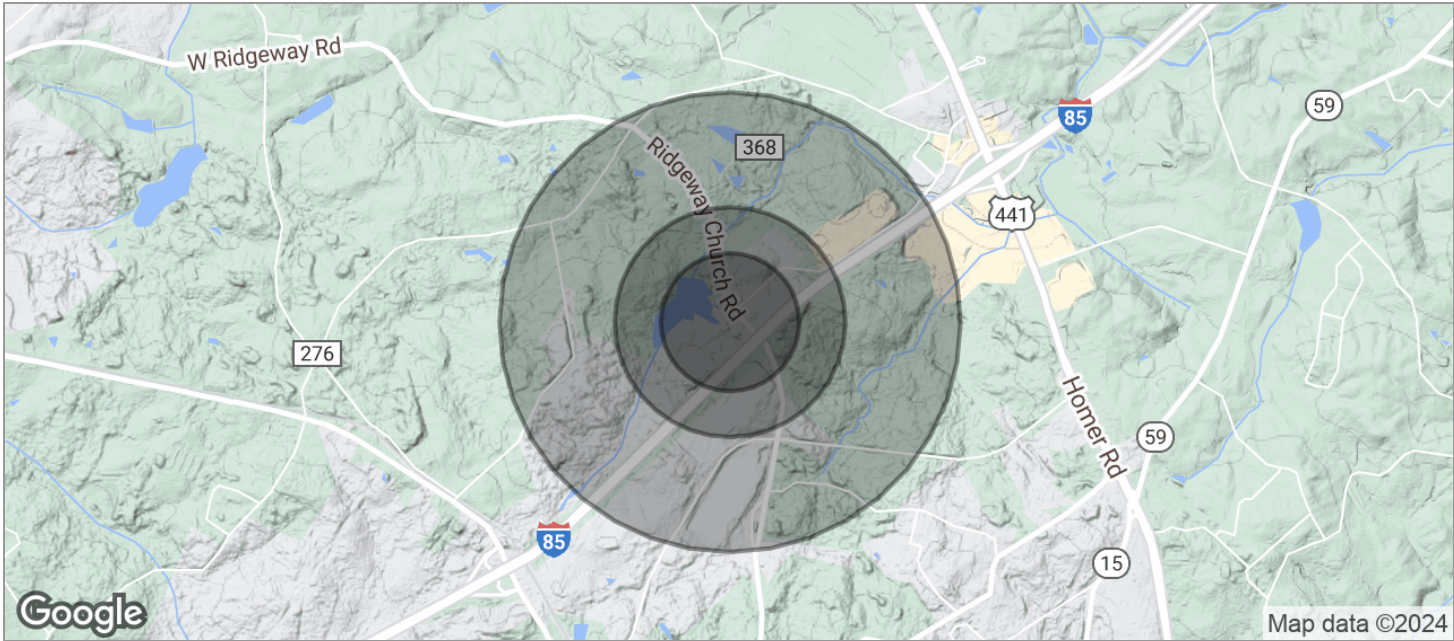
# NORTON

The information contained herein is from other sources believed to be reliable. No independent investigation of the property or the information contained herein has been made, and no representation is made as to the accuracy or completeness thereof. Properties are subject to sale, withdrawal and other sales or rental condition. Terms are subject to errors, and change without notice.



# 119.17 Acres Ridgeway Church Rd

1911 RIDGEWAY CHURCH ROAD, COMMERCE, GA 30529



POPULATION	0.3 MILES	0.5 MILES	1 MILE
TOTAL POPULATION	2	13	176
MEDIAN AGE	42	42	40
MEDIAN AGE (MALE)	41	40	39
MEDIAN AGE (FEMALE)	44	43	42
HOUSEHOLDS & INCOME	0.3 MILES	0.5 MILES	1 MILE
TOTAL HOUSEHOLDS	1	5	63
# OF PERSONS PER HH	2	2.6	2.8
AVERAGE HH INCOME	\$66,997	\$69,800	\$74,962
AVERAGE HOUSE VALUE	\$363,105	\$331,854	\$270,883

\* Demographic data derived from 2020 ACS - US Census

For More Information:

Norton Commercial 434 Green Street Gainesville, GA 30501 [nortoncommercial.com](http://nortoncommercial.com)

Stephen Lovett

770.297.4807

[slovett@nortoncommercial.com](mailto:slovett@nortoncommercial.com)

Matt McCord

770.718.5102

[matt@nortoncommercial.com](mailto:matt@nortoncommercial.com)

NORTON

The information contained herein is from other sources believed to be reliable. No independent investigation of the property or the information contained herein has been made, and no representation is made as to the accuracy or completeness thereof. Properties are subject to sale, withdrawal and other sales or rental condition. Terms are subject to errors, and change without notice.