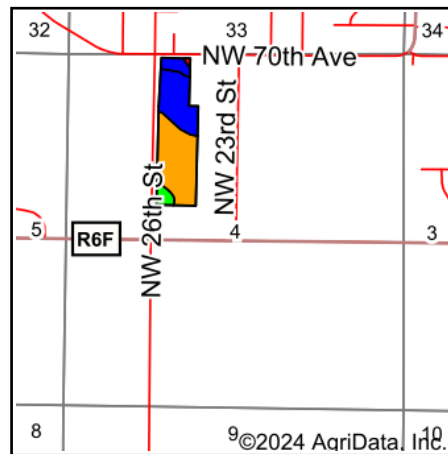
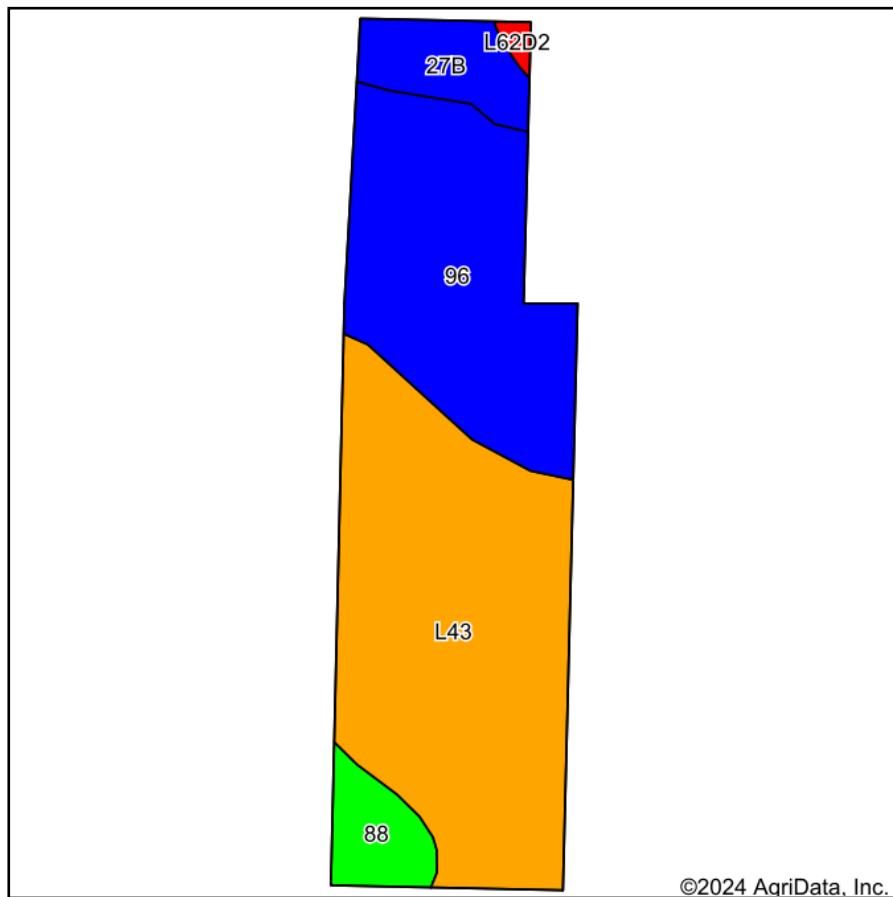


Soils Map



State: **Iowa**
 County: **Polk**
 Location: **4-79N-24W**
 Township: **Saylor**
 Acres: **30.03**
 Date: **7/23/2024**



Maps Provided By:
surety
 CUSTOMIZED ONLINE MAPPING
 © AgriData, Inc. 2023 www.AgriDataInc.com



Area Symbol: IA153, Soil Area Version: 26

Code	Soil Description	Acres	Percent of field	CSR2 Legend	Non-Irr Class *c	*i Corn Bu	*i Soybeans Bu	CSR2**	CSR	*n NCCPI Soybeans
L43	Bremer silty clay loam, 0 to 2 percent slopes, rarely flooded	16.03	53.3%		IIw			77		72
96	Turlin loam, 0 to 2 percent slopes, occasionally flooded	10.02	33.4%		IIw	80.0	23.2	89	90	85
27B	Terril loam, 2 to 6 percent slopes	2.12	7.1%		Ile	224.0	65.0	87	86	84
88	Nevin silty clay loam, 0 to 2 percent slopes	1.67	5.6%		Iw	227.2	65.9	93	90	87
L62D2	Storden loam, Bemis moraine, 10 to 16 percent slopes, moderately eroded	0.19	0.6%		IVe	0.0	0.0	41		63
Weighted Average					1.96	55.1	16	82.4	*-	*n 78

**IA has updated the CSR values for each county to CSR2.

*- CSR weighted average cannot be calculated on the current soils data, use prior data version for csr values.*i Yield data provided by the ISPAID Database version 8.1.1 developed by IA State University.

*n: The aggregation method is "Weighted Average using all components"

*c: Using Capabilities Class Dominant Condition Aggregation Method