



Listing Summary

# Chestnut Mountain

Travelers Rest, SC



# Who We Are

Reedy Land Co

REEDY

## LAND IS MORE THAN DIRT. IT'S YOUR LEGACY.

Whether you're building on a dream or managing generational wealth, the land you choose to call home is deeply personal.

People. Loyalty. Trust. These are the foundations of our approach to real estate. We connect people to places. We guide development for future generations. And, we transform your vision of the "good life" into your everyday life.

---

### Anderson Drake

864.546.0342

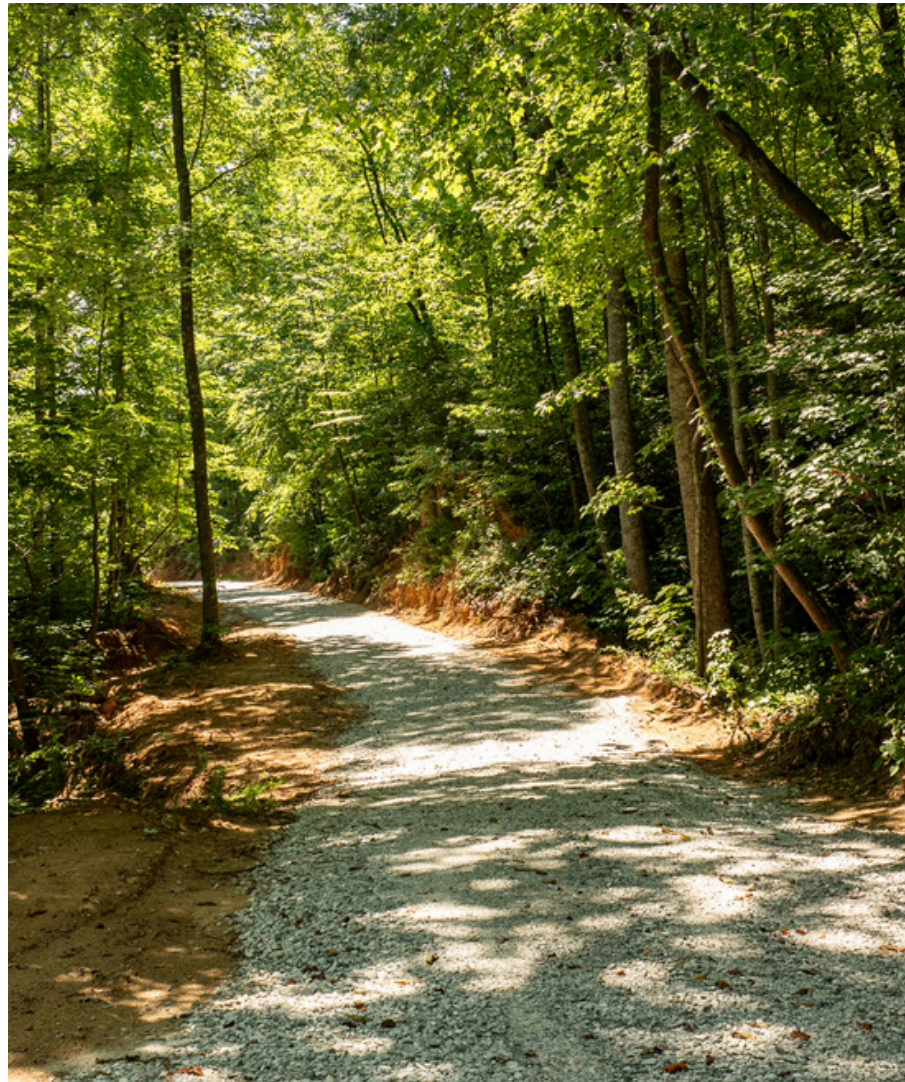
[adrake@reedypg.com](mailto:adrake@reedypg.com)



### Tripp Taylor

336.260.5523

[ttaylor@reedypg.com](mailto:ttaylor@reedypg.com)





## Parcel Overview

00 Chestnut Mountain Road

REEDY



## Property Summary

### 00 Chestnut Mountain Road

Come experience the breathtaking beauty of Travelers Rest, renowned for its stunning vistas in Greenville County. Reedy Land Co invites you to seize an exceptional opportunity with our ±255-acre tract on Chestnut Mountain. This rare gem boasts a gravel road system that provides an enchanting, winding driveway leading up to your dream home. At the summit, you'll be treated to unparalleled 360-degree views of the Blue Ridge Mountains. And while you'll feel a world away, downtown Travelers Rest is just a 20-minute drive, offering access to all the delightful farmer's markets you could want. Meanwhile, you'll be only 30 minutes from Tryon or 20 minutes from Saluda, affording you easy access to even more amenities. Don't miss out on this once-in-a-lifetime opportunity!

#### Additional Noteworthy Information:

- 360 Mountain Views
- Gravel Driveway Install
- Private Estate Tract
- Two (2) Homesites on the Ridgeline
- Excellent Location



**Sale Price:**  
\$2,195,000



**Lot Size:**  
± 255.2 Acres



± 10 minutes from  
The Cliffs



± 20 minutes from  
Travelers Rest, SC



± 20 minutes  
from Saluda, NC



± 30 minutes  
from Tryon, NC



## Property Photos

---

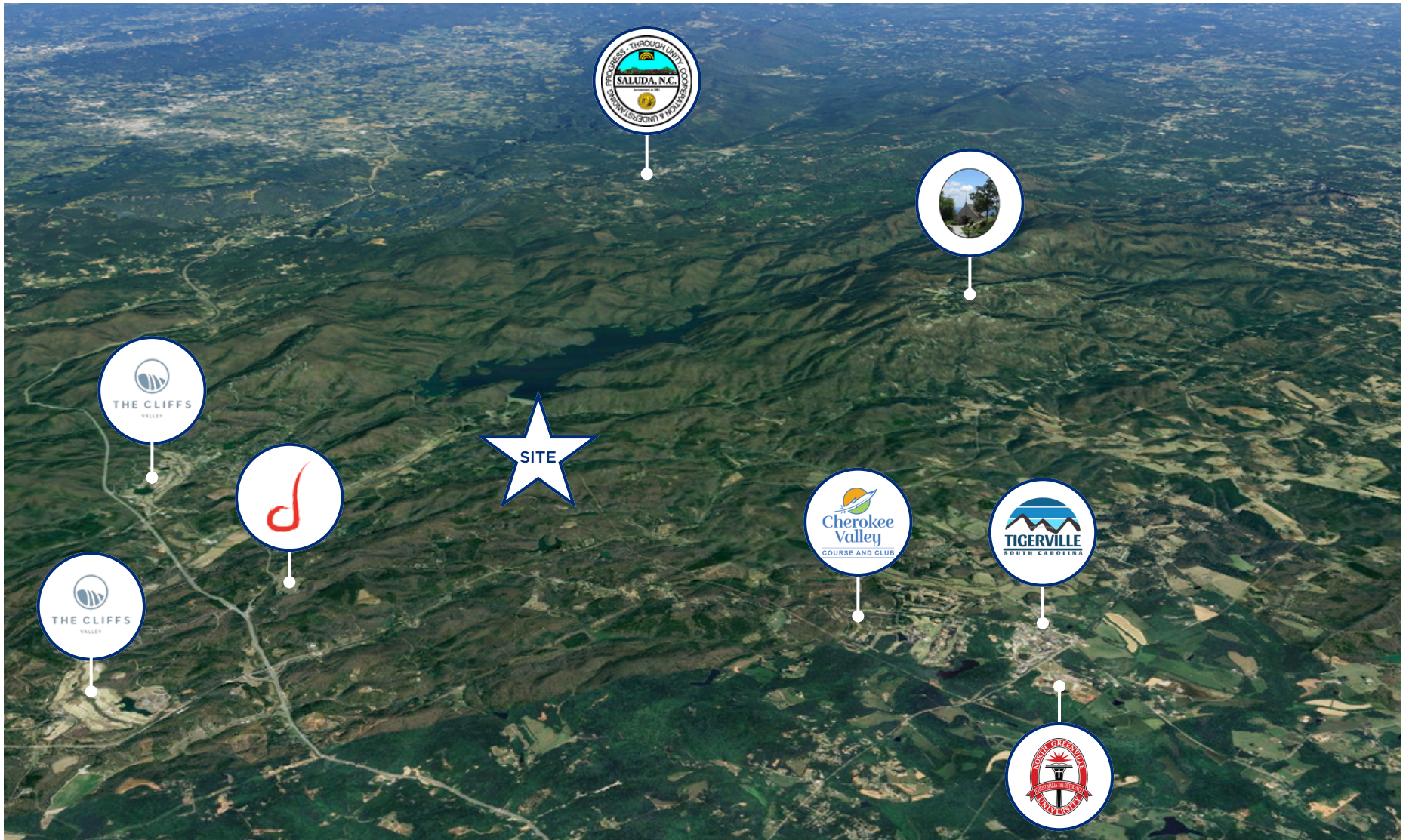




# Local Amenities

00 Chestnut Mountain Road

REEDY

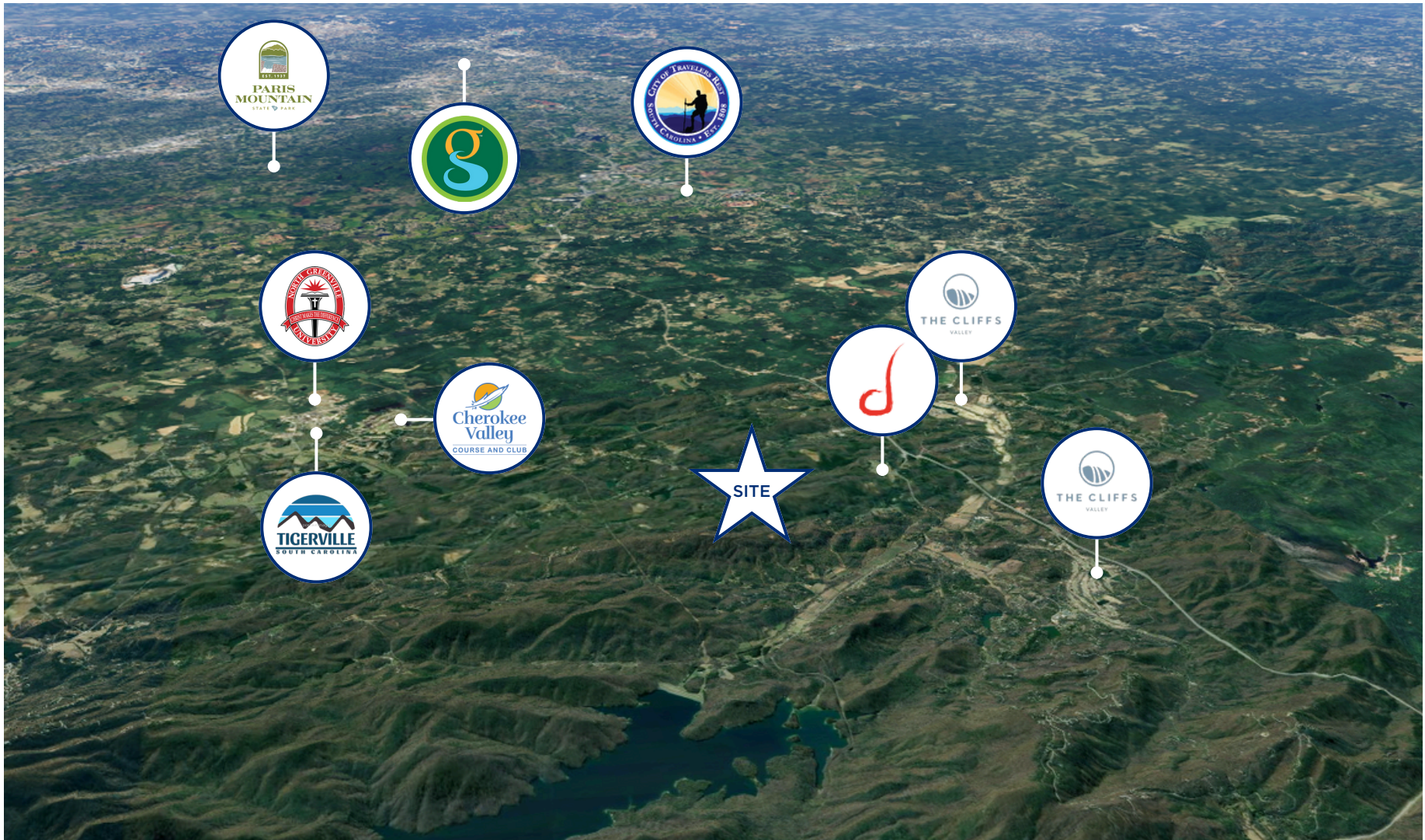




## Local Amenities

00 Chestnut Mountain Road

REEDY





# Confidentiality & Disclaimer

REEDY

All materials and information received or derived from Reedy Property Group its directors, officers, agents, advisors, affiliates and/or any third party sources are provided without representation or warranty as to completeness, veracity, or accuracy, condition of the property, compliance or lack of compliance with applicable governmental requirements, developability or suitability, financial performance of the property, projected financial performance of the property for any party's intended use or any and all other matters.

Neither Reedy Property Group its directors, officers, agents, advisors, or affiliates makes any representation or warranty, express or implied, as to accuracy or completeness of the any materials or information provided, derived, or received. Materials and information from any source, whether written or verbal, that may be furnished for review are not a substitute for a party's active conduct of its own due diligence to determine these and other matters of significance to such party. Reedy Property Group will not investigate or verify any such matters or conduct due diligence for a party unless otherwise agreed in writing.

EACH PARTY SHALL CONDUCT ITS OWN INDEPENDENT INVESTIGATION AND DUE DILIGENCE.

Any party contemplating or under contract or in escrow for a transaction is urged to verify all information and to conduct their own inspections and investigations including through appropriate third party independent professionals selected by such party. All financial data should be verified by the party including by obtaining and reading applicable documents and reports and consulting appropriate independent professionals. Reedy Property Group makes no warranties and/or representations regarding the veracity, completeness, or relevance of any financial data or assumptions. Reedy Property Group does not serve as a financial advisor to any party regarding any proposed transaction. All data and assumptions regarding financial performance, including that used for financial modeling purposes, may differ from actual data or performance. Any estimates of market rents and/or projected rents that may be provided to a party do not necessarily mean that rents can be established at or increased to that level. Parties must evaluate any applicable contractual and governmental limitations as well as market conditions, vacancy factors and other issues in order to determine rents from or for the property.

Legal questions should be discussed by the party with an attorney. Tax questions should be discussed by the party with a certified public accountant or tax attorney. Title questions should be discussed by the party with a title officer or attorney. Questions regarding the condition of the property and whether the property complies with applicable governmental requirements should be discussed by the party with appropriate engineers, architects, contractors, other consultants and governmental agencies. All properties and services are marketed by Reedy Property Group in compliance with all applicable fair housing and equal opportunity laws.

