

**ONE EQUITY SHARE**  
**HARDIN POINT HUNTING CLUB**  
**LEE COUNTY, AR**  
**\$235,000**



**SMALLTOWN**

HUNTING PROPERTIES  
& REAL ESTATE<sup>SM</sup>

OFFICE (769) 888-2522

# HARDIN POINT HUNTING CLUB

## ONE EQUITY SHARE

## PROPERTY PROFILE

### LOCATION:

- Parkin Camp Road  
Tunica, MS 38676
- Lee County, AR
- Mississippi River Bottom
- 7.5± Miles W of Tunica

### COORDINATES:

- 34.7038, -90.46

### PROPERTY USE:

- Recreational
- Hunting

### PROPERTY INFORMATION:

- 10,741± Acres Owned  
with Timber Rights
- 107 Total Shares: 9 Club-Owned,  
98 Owned by 60± Members
- Annual Dues \$6,875 (Maintenance  
& Debt Service)

- Debt Amount Available  
Upon Request
- Exceptional Hunting  
(Deer, Duck, Turkey, & Small Game)
- Biologist Approved Mgt Bucks  
Don't Count Against Harvest
- Mississippi River & Tunica Lake  
Frontage (Private Boat Ramp)
- Good Fishing in the MS River  
& Tunica Lake (3,500+ Acres)
- Full-Time Caretaker  
& Wildlife Biologist
- Numerous Wildlife Plots in Place
- Miles and Miles of Interior Roads
- Very Remote Area
- Mississippi River Access:  
Sandbar Fun
- Skinning Shed
- Family Oriented Club  
(Guest Allowed to Kill Trophy Bucks)
- Additional Share  
with Cabin Available
- Membership Subject  
to Club Approval



**SMALLTOWN**  
HUNTING PROPERTIES  
& REAL ESTATE<sup>SM</sup>

**MICHAEL OSWALT, ALC**

PRINCIPAL BROKER

C: 662-719-3967

O: 769-888-2522

[michael@smalltownproperties.com](mailto:michael@smalltownproperties.com)

4848 Main St. - Flora, MS 39071

[smalltownproperties.com](http://smalltownproperties.com)

/21,000+ Followers

Information is believed to be accurate but not guaranteed.



# WELCOME TO HARDIN POINT HUNTING CLUB

**WELCOME TO HARDIN POINT HUNTING CLUB!** As you pull through the gate, you will be headed to one of the most secluded clubs in the Mississippi River Bottom. Hardin Point Hunting Club was formed in 1962 and has been a successful Mississippi River Hunting Club ever since. The club currently owns 10,741± acres including all timber rights. There are 107 total shares, nine owned by the club and 98 owned by approximately 60 members. The club enjoys a full-time caretaker (Peter Mallory) and a part-time wildlife biologist (Chris McDonald). As you ride the miles and miles of interior roads you will eventually encounter most every aspect the Mississippi River Bottom has to offer: big timber, cutover, wildlife plots, Mississippi River frontage, Tunica Lake frontage, and sloughs. The hunting and fishing are exceptional with big deer (biggest 170"±), loads of turkeys, ducks, and small game. Hardin Point offers year-round enjoyment with something for everyone in the family. The club is accessed from the Mississippi side of the river but located in Lee County, Arkansas just 7.5± miles west of Tunica, MS and 40± southwest of Memphis, TN. You can drive into the club until the Memphis, TN River Gauge reaches 21 feet. An additional share with a cabin is available.

**If you have been looking for a Mississippi River Bottom getaway, give Michael Oswalt a call for your private tour of Hardin Point today!**



**SMALLTOWN**  
HUNTING PROPERTIES  
& REAL ESTATE<sup>SM</sup>

**MICHAEL OSWALT, ALC**

PRINCIPAL BROKER


C: 662-719-3967

O: 769-888-2522

[michael@smalltownproperties.com](mailto:michael@smalltownproperties.com)

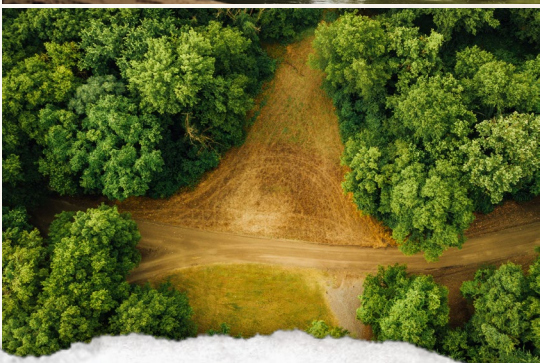
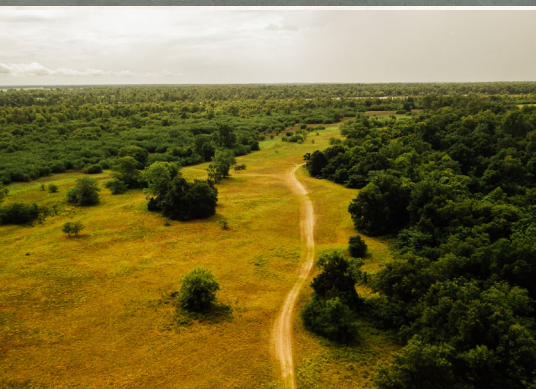
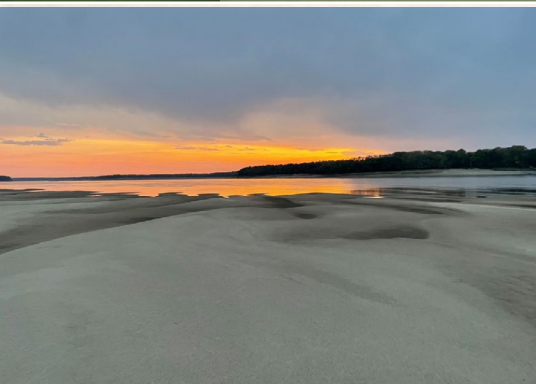
4848 Main St. - Flora, MS 39071

[smalltownproperties.com](http://smalltownproperties.com)

 21,000+ Followers

Information is believed to be accurate but not guaranteed.





**SMALLTOWN**  
HUNTING PROPERTIES  
& REAL ESTATE<sup>SM</sup>

**MICHAEL OSWALT, ALC**

PRINCIPAL BROKER


C: 662-719-3967

O: 769-888-2522

[michael@smalltownproperties.com](mailto:michael@smalltownproperties.com)

4848 Main St. - Flora, MS 39071

[smalltownproperties.com](http://smalltownproperties.com)

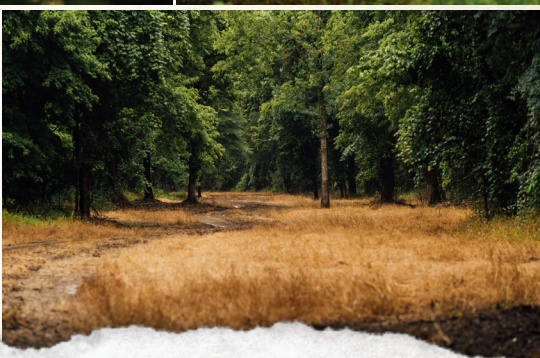
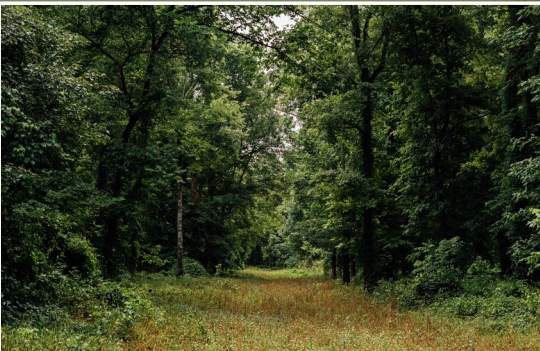
 /21,000+ Followers

Information is believed to be accurate but not guaranteed.



ONE EQUITY SHARE

HARDIN POINT HUNTING CLUB • LEE COUNTY, ARKANSAS



**SMALLTOWN**  
HUNTING PROPERTIES  
& REAL ESTATE<sup>SM</sup>

**MICHAEL OSWALT, ALC**

PRINCIPAL BROKER


C: 662-719-3967

O: 769-888-2522

[michael@smalltownproperties.com](mailto:michael@smalltownproperties.com)

4848 Main St. - Flora, MS 39071

[smalltownproperties.com](http://smalltownproperties.com)

 21,000+ Followers

Information is believed to be accurate but not guaranteed.





**SMALLTOWN**  
HUNTING PROPERTIES  
& REAL ESTATE<sup>SM</sup>

**MICHAEL OSWALT, ALC**

PRINCIPAL BROKER


C: 662-719-3967

O: 769-888-2522

[michael@smalltownproperties.com](mailto:michael@smalltownproperties.com)

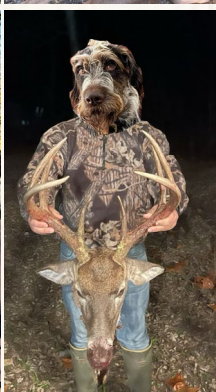
4848 Main St. - Flora, MS 39071

[smalltownproperties.com](http://smalltownproperties.com)

 21,000+ Followers

Information is believed to be accurate but not guaranteed.





**SMALLTOWN**  
HUNTING PROPERTIES  
& REAL ESTATE<sup>SM</sup>

**MICHAEL OSWALT, ALC**

PRINCIPAL BROKER

C: 662-719-3967

O: 769-888-2522

[michael@smalltownproperties.com](mailto:michael@smalltownproperties.com)

4848 Main St. - Flora, MS 39071

[smalltownproperties.com](http://smalltownproperties.com)

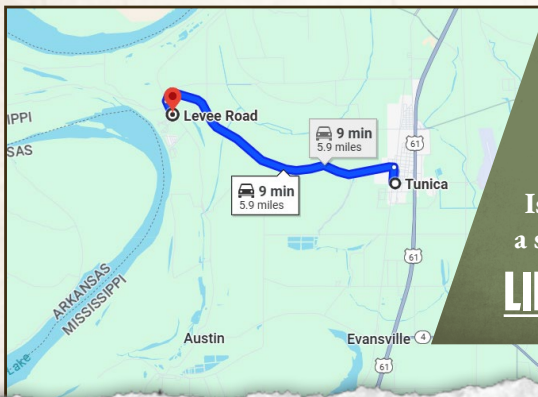
/21,000+ Followers

Information is believed to be accurate but not guaranteed.





land id. **LINK**



Directions from Tunica, MS to where you cross the MS River Levee: Travel west on PFC Dawson Road toward Edwards Ave/Old U.S. 61 N and turn right onto Main Street and travel for .3 miles. Turn left onto Fox Island Road and travel for 5.2 miles. Take a slight left onto Levee Road.

**LINK TO GOOGLE MAP DIRECTIONS**



**SMALLTOWN**  
HUNTING PROPERTIES  
& REAL ESTATE<sup>SM</sup>

**MICHAEL OSWALT, ALC**

PRINCIPAL BROKER

C: 662-719-3967

O: 769-888-2522

[michael@smalltownproperties.com](mailto:michael@smalltownproperties.com)

4848 Main St. - Flora, MS 39071

[smalltownproperties.com](http://smalltownproperties.com)

21,000+ Followers

Information is believed to be accurate but not guaranteed.