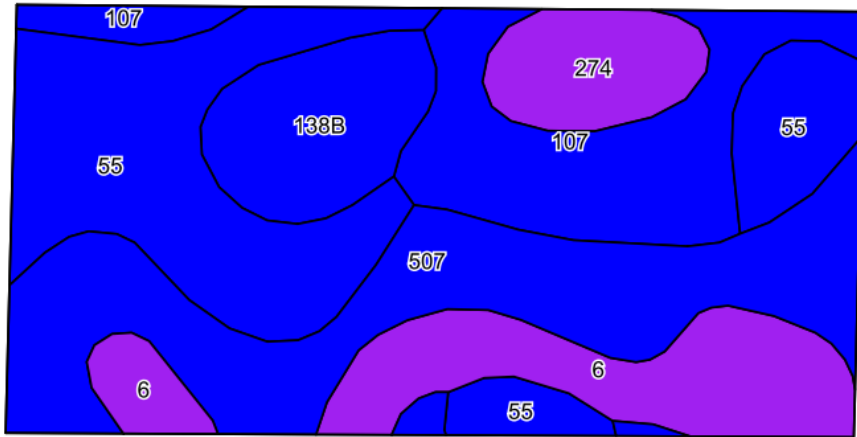
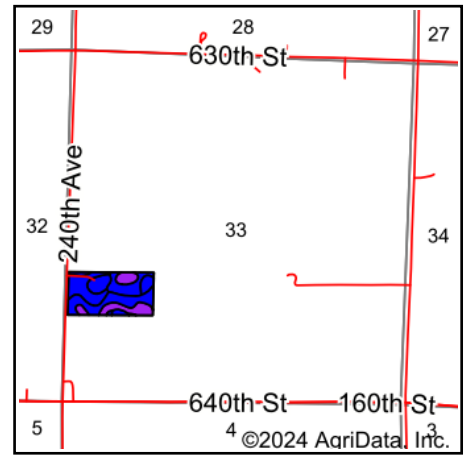


Soils Map



©2024 AgriData, Inc.

Soils data provided by USDA and NRCS.



State: **Iowa**
 County: **Pocahontas**
 Location: **33-90N-32W**
 Township: **Bellville**
 Acres: **19.82**
 Date: **8/14/2024**



Maps Provided By:



Area Symbol: IA151, Soil Area Version: 30

| Code | Soil Description | Acres | Percent of field | CSR2 Legend | Non-Irr Class *c | CSR2** | CSR | *n NCCPI Overall | *n NCCPI Corn | *n NCCPI Small Grains | *n NCCPI Soybeans |
|------------------|--|-------|------------------|-------------|------------------|--------|------|------------------|---------------|-----------------------|-------------------|
| 55 | Nicollet clay loam, 1 to 3 percent slopes | 5.43 | 27.5% | | Iw | 89 | 86 | 81 | 81 | 74 | 81 |
| 507 | Canisteo clay loam, 0 to 2 percent slopes | 5.19 | 26.2% | | IIw | 84 | 76 | 81 | 71 | 65 | 81 |
| 107 | Webster clay loam, 0 to 2 percent slopes | 3.30 | 16.6% | | IIw | 86 | 81 | 83 | 78 | 70 | 82 |
| 6 | Okoboji silty clay loam, 0 to 1 percent slopes | 2.90 | 14.6% | | IIIw | 59 | 55 | 77 | 74 | 74 | 74 |
| 138B | Clarion loam, 2 to 6 percent slopes | 1.77 | 8.9% | | Ile | 89 | 78 | 83 | 78 | 72 | 83 |
| 274 | Rolfe silt loam, 0 to 1 percent slopes | 1.23 | 6.2% | | IIIw | 57 | 55 | 83 | 82 | 69 | 68 |
| Weighted Average | | | | | 1.93 | 80.8 | 75.4 | *n 81.1 | *n 76.7 | *n 70.5 | *n 79.5 |

**IA has updated the CSR values for each county to CSR2.

*n: The aggregation method is "Weighted Average using all components"

*c: Using Capabilities Class Dominant Condition Aggregation Method

Soils data provided by USDA and NRCS.