



GRANITE BASIN RANCH

TBD W SH 29 Llano, TX

22 Acres | \$349,000



Copyright 2024 Grand Land Realty, LLC
The material contained in this document is based in part upon information furnished to Grand Land Realty, LLC. by sources deemed to be reliable. The information is believed to be accurate in all material respects, but no representation or warranty, expressed, or implied, as to list accuracy or completeness is made by any party. Recipients should conduct their own investigation and analysis of the information described herein.



Dustin Preston

Realtor®- Land Specialist

dpreston@grandland.com

(281) 787-5401

PROPERTY DESCRIPTION

The Granite Basin Ranch is an attractive 22-acre property located just outside Llano, TX. This diverse landscape features a variety of wildlife, including whitetail deer, wild hogs, and several varmint species. The ranch offers a balanced mix of pastureland and brush, creating an ideal habitat for both wildlife and cattle. With more than 25 feet of elevation change, the views are expansive and breathtaking.

The property is wildlife-exempt and includes a wet weather creek running through the northeast corner, providing an excellent site for a pond. You'll find a rich variety of vegetation, including Live Oaks, Mesquite, KR Bluestem, and other native trees and grasses. The ranch is fenced on three sides with goat wire and has an electric pole on-site.

Conveniently located near several metropolitan areas, this tract is perfect for a recreational weekend retreat or as a promising investment. It boasts over 900 feet of HWY 29 frontage and is situated in an area poised for growth. The seller is open to adjusting the acreage to fit the buyer's needs. Minerals will convey.

Copyright 2024 Grand Land Realty, LLC
The material contained in this document is based in part upon information furnished to Grand Land Realty, LLC, by sources deemed to be reliable. The information is believed to be accurate in all material respects, but no representation or warranty, expressed, or implied, as to list accuracy or completeness is made by any party. Recipients should conduct their own investigation and analysis of the information described herein.



Dustin Preston
Realtor®- Land Specialist
dpreston@grandland.com
(281) 787-5401



SCAN HERE TO SEE MORE OF
GRANITE BASIN RANCH

LOCATION

Llano County

18 miles to Llano Municipal Airport, 38 miles to Fredericksburg, 64 miles to Georgetown, 95 miles to Austin-Bergstrom International Airport.

DIRECTIONS

From Llano take HWY 29 west for 15.4 miles. Property will be on your right.

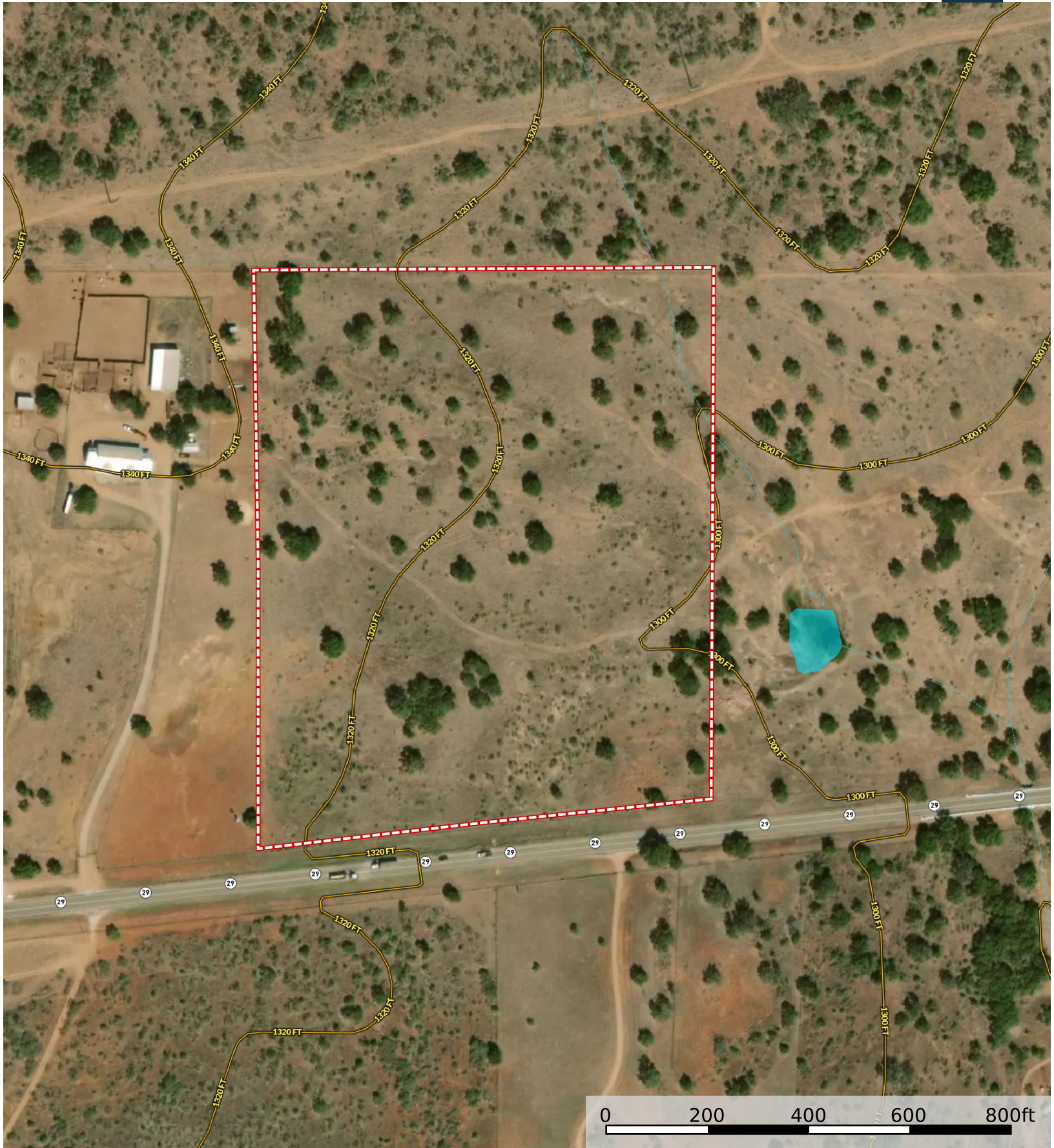
Copyright 2024 Grand Land Realty, LLC
The material contained in this document is based in part upon information furnished to Grand Land Realty, LLC. by sources deemed to be reliable. The information is believed to be accurate in all material respects, but no representation or warranty, expressed, or implied, as to list accuracy or completeness is made by any party. Recipients should conduct their own investigation and analysis of the information described herein.



Dustin Preston
Realtor®- Land Specialist
dpreston@grandland.com
(281) 787-5401



 Boundary  Stream, Intermittent  River/Creek  Water Body

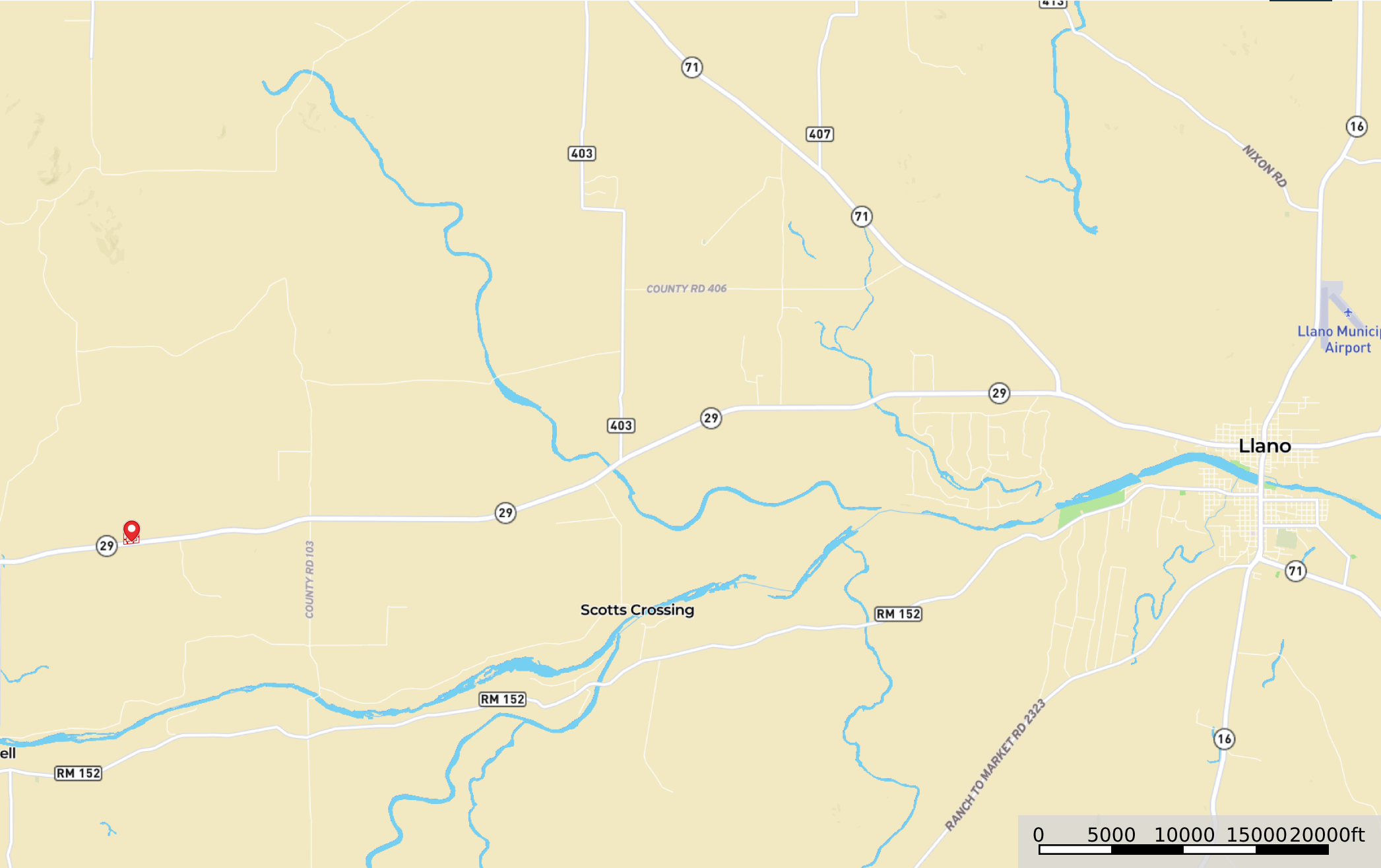


 Boundary

 Stream,
Intermittent

 River/Creek

 Water Body



Marker 1