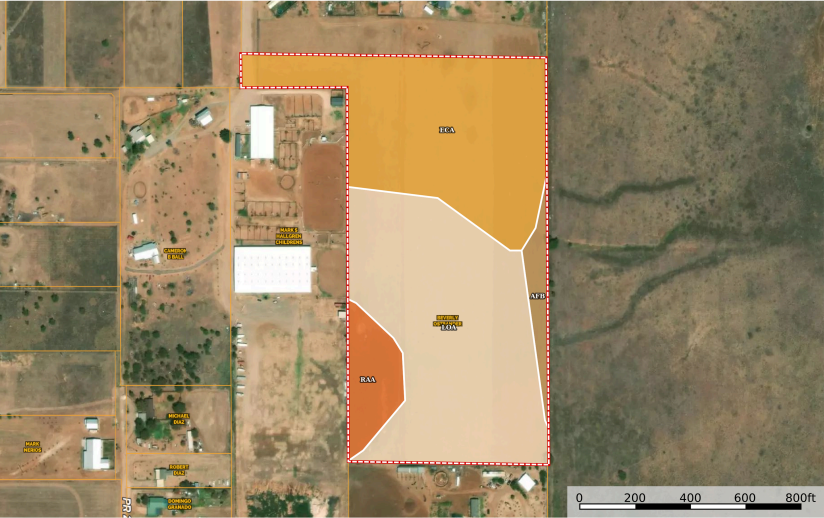


Ostrander 23.88 Acres
Lubbock County, Texas, 23.88 AC +/-



Cayson George
P.O. Box 62

The information contained herein was obtained from sources deemed to be reliable and/or Services makes no warranties or guarantees as to the completeness or accuracy thereof.

Boundary 23.83 ac

SOIL CODE	SOIL DESCRIPTION	ACRES	%	CPI	NCCPI	CAP
LoA	Lofton clay loam, 0 to 1 percent slopes, occasionally ponded	11.5	48.26	0	34	5w
EcA	Estacado clay loam, 0 to 1 percent slopes	9.66	40.54	0	48	2c
RaA	Randall clay, 0 to 1 percent slopes, occasionally ponded	1.76	7.39	0	18	6w
AfB	Amarillo fine sandy loam, 1 to 3 percent slopes	0.91	3.82	0	46	3e
TOTALS		23.83(*)	100%	-	38.95	3.78

(*) Total acres may differ in the second decimal compared to the sum of each acreage soil. This is due to a round error because we only show the acres of each soil with two decimal.

Capability Legend

Increased Limitations and Hazards
Decreased Adaptability and Freedom of Choice Users

Land, Capability	1	2	3	4	5	6	7	8
'Wild Life'	•	•	•	•	•	•	•	•
Forestry	•	•	•	•	•	•	•	•
Limited	•	•	•	•	•	•	•	•
Moderate	•	•	•	•	•	•	•	•
Intense	•	•	•	•	•	•	•	•
Limited	•	•	•	•	•	•	•	•
Moderate	•	•	•	•	•	•	•	•
Intense	•	•	•	•	•	•	•	•
Very Intense	•	•	•	•	•	•	•	•

Grazing Cultivation

(c) climatic limitations (e) susceptibility to erosion
(s) soil limitations within the rooting zone (w) excess of water