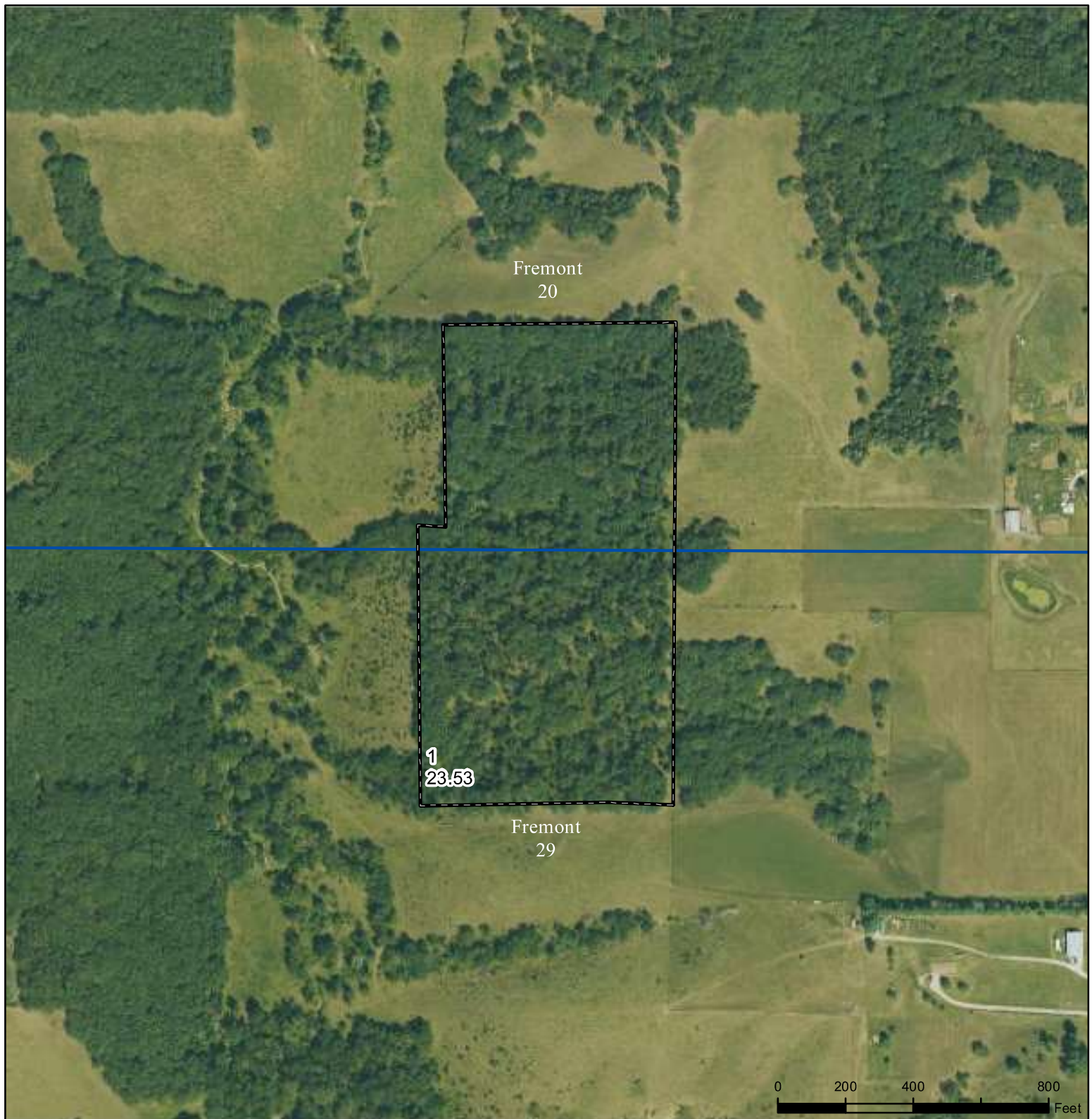
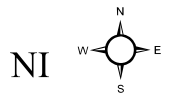




United States  
Department of  
Agriculture

## Clarke County, Iowa



- Legend**
- |              |                |            |
|--------------|----------------|------------|
| Non-Cropland | CRP            | Iowa PLSS  |
| Cropland     | Tract Boundary | Iowa Roads |

**Wetland Determination**

- Restricted
- Limited
- Exempt from Conservation Compliance Provisions

Tract Cropland Total: 0.00 acres

2024 Program Year  
Map Created February 20, 2024

Farm **1774**  
Tract **1236**

United States Department of Agriculture (USDA) Farm Service Agency (FSA) maps are for FSA Program administration only. This map does not represent a legal survey or reflect actual ownership; rather it depicts the information provided directly from the producer and/or National Agricultural Imagery Program (NAIP) imagery. The producer accepts the data 'as is' and assumes all risks associated with its use. USDA-FSA assumes no responsibility for actual or consequential damage incurred as a result of any user's reliance on this data outside FSA Programs. Wetland identifiers do not represent the size, shape, or specific determination of the area. Refer to your original determination (CPA-026 and attached maps) for exact boundaries and determinations or contact USDA Natural Resources Conservation Service (NRCS).

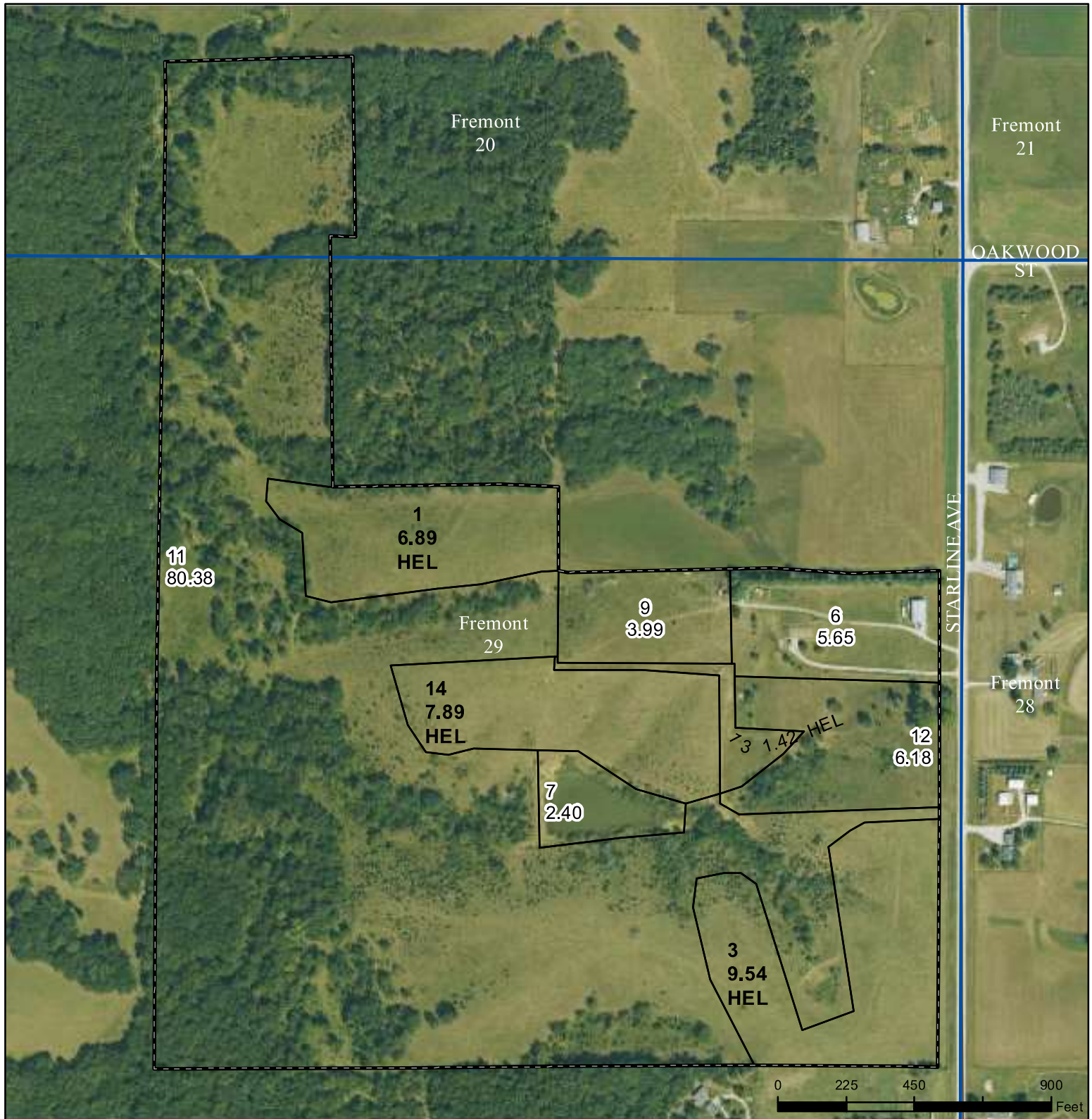
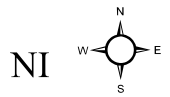
USDA is an equal opportunity provider, employer, and lender.





United States  
Department of  
Agriculture

# Clarke County, Iowa



- Legend**
- Non-Cropland
  - Cropland
  - CRP
  - Tract Boundary
  - Iowa PLSS
  - Iowa Roads

- Wetland Determination**
- Restricted
  - Limited
  - Exempt from Conservation Compliance Provisions

Tract Cropland Total: 25.74 acres

2024 Program Year  
Map Created July 11, 2024

Farm 1774  
Tract 1255

United States Department of Agriculture (USDA) Farm Service Agency (FSA) maps are for FSA Program administration only. This map does not represent a legal survey or reflect actual ownership; rather it depicts the information provided directly from the producer and/or National Agricultural Imagery Program (NAIP) imagery. The producer accepts the data 'as is' and assumes all risks associated with its use. USDA-FSA assumes no responsibility for actual or consequential damage incurred as a result of any user's reliance on this data outside FSA Programs. Wetland identifiers do not represent the size, shape, or specific determination of the area. Refer to your original determination (CPA-026 and attached maps) for exact boundaries and determinations or contact USDA Natural Resources Conservation Service (NRCS).

USDA is an equal opportunity provider, employer, and lender.