

MARTIN CREEK FARM | 240.22 Acres

201 Craigo Road, Fountain Inn, SC 29644



PRICE REDUCED: \$4,990,000

VIEW SITE VIDEO



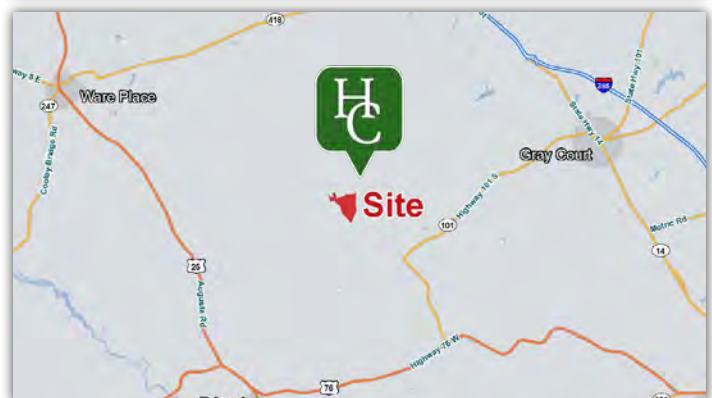
AWARDS

2018 SC Pinnacle Award for New Construction

2017 Greenville HBA Bridge Award for Best New Home and Best Kitchen

Property Features

- Greenville County TM#s 0565010101800, 0565010101802 (P/O), & 0565010101700
- Includes MLS #1510772 (117 acres listed with Melissa Hall/Allen Tate Realtors)
- 4 BR/4.5 BA Carson Speer home custom built in 2017 (4,300 SF)
- Wraparound covered porch
- In-ground pool with shallow-end sun lounge and hot tub
- Detached 3-car garage
- Pole barn with four bays
- +- 90 acres of thirty-two-year-old loblolly (twice thinned)
- +-26 acres of hardwood creek bottoms
- +-116 acres of 15-20-year-old natural hardwood and pine regrowth
- +-4,600' of frontage on Martin Creek
- Five food plots including a large field along Martin Creek
- +- 630' of frontage on Craigo Road
- +-2 miles of maintained internal roads
- 100 yard gun range with covered shooting area



Rusty Hamrick

+1 864 232 9040

rahamrick@naiearlefurman.com

No Warranty Or Representation, Express Or Implied, Is Made As To The Accuracy Of The Information Contained Herein, And The Same Is Submitted Subject To Errors, Omissions, Change Of Price, Rental Or Other Conditions, Prior Sale, Lease Or Financing, Or Withdrawal Without Notice, And Of Any Special Listing Conditions Imposed By Our Principals No Warranties Or Representations Are Made As To The Condition Of The Property Or Any Hazards Contained Therein Are Any To Be Implied.

The Timber and Recreational Land Division of NAI Earle Furman

101 E Washington St

Greenville, SC 29601

huffcreekproperties.com

Property Highlights

201 Craigo Road, Fountain Inn, SC 29644



Exterior Property Features

- Wraparound covered porch
- Board and batten exterior details with exposed rafters
- Metal roof
- Built-in galvanized raised landscaping beds
- Gutter systems with rain chain accents
- Inground pool with shallow end sun lounge and hot tub
- Detached 3-car garage
- Detached chicken coop
- Screen porch with vaulted ceiling and sliding french doors
- Pole barn with four bays
- Raised garden beds
- 100 yard gun range with covered shooting area
- +-90 acres of thirty-two-year-old loblolly (twiced thinned)
- +-26 acres of hardwood creek bottoms
- +-116 acres of 15-20 year old natural hardwood and pine regrowth
- +-4,600 feet of frontage on Martin Creek
- Five food plots including a large field along Martin Creek
- +-630' of frontage on Craigo Road
- +-2 miles of maintained internal roads



Rusty Hamrick

+1 864 232 9040

rahamrick@naiearlefurman.com

No Warranty Or Representation, Express Or Implied, Is Made As To The Accuracy Of The Information Contained Herein, And The Same Is Submitted Subject To Errors, Omissions, Change Of Price, Rental Or Other Conditions, Prior Sale, Lease Or Financing, Or Withdrawal Without Notice, And Of Any Special Listing Conditions Imposed By Our Principals No Warranties Or Representations Are Made As To The Condition Of The Property Or Any Hazards Contained Therein Are Any To Be Implied.

The Timber and Recreational Land Division of NAI Earle Furman

101 E Washington St

Greenville, SC 29601

huffcreekproperties.com

Property Highlights

201 Craigo Road, Fountain Inn, SC 29644



Interior Home Features

- Walk-up future bonus room which is currently used for storage space
- Drop-zone with hooks and cubbies off covered rear entry
- Laundry Room with dog wash
- Screen porch with vaulted ceiling and sliding french doors
- Living Room includes a shiplap wall, vaulted ceiling with exposed beams, and a wood-burning fireplace
- Spacious Kitchen includes Bluestar six gas range burner with griddle, pot filler, subway tile backsplash, huge center island, conveniently located butler's pantry with detailed custom tile backsplash, sink and beverage cooler with ice machine
- Office Space with custom built-ins
- Master Suite on main level includes his and hers marble vanities, beautiful marble floors, a private water closet, large walk-in closet and a walk-in shower
- Upstairs Bedrooms include private bathrooms and walk-in closets
- Two additional Bonus Rooms
- Internet access and alarm system
- Encapsulated crawlspace



Rusty Hamrick

+1 864 232 9040

rahamrick@naiearlefurman.com

No Warranty Or Representation, Express Or Implied, Is Made As To The Accuracy Of The Information Contained Herein, And The Same Is Submitted Subject To Errors, Omissions, Change Of Price, Rental Or Other Conditions, Prior Sale, Lease Or Financing, Or Withdrawal Without Notice, And Of Any Special Listing Conditions Imposed By Our Principals No Warranties Or Representations Are Made As To The Condition Of The Property Or Any Hazards Contained Therein Are Any To Be Implied.

The Timber and Recreational Land Division of NAI Earle Furman

101 E Washington St

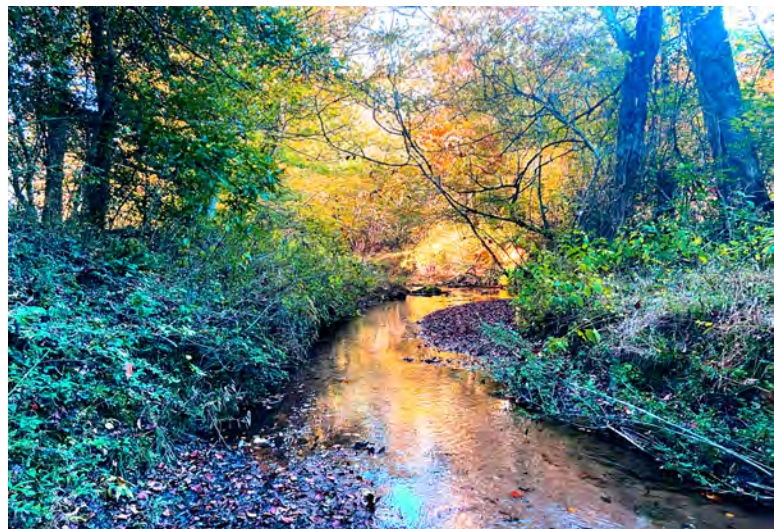
Greenville, SC 29601

huffcreekproperties.com

Property Photos

201 Craigo Road, Fountain Inn, SC 29644

 Huff Creek
Properties



Rusty Hamrick
+1 864 232 9040
rhamrick@naiearlefurman.com

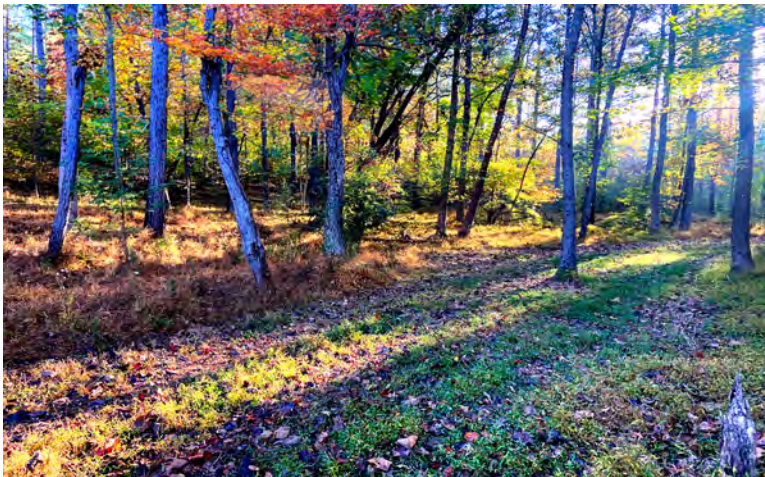
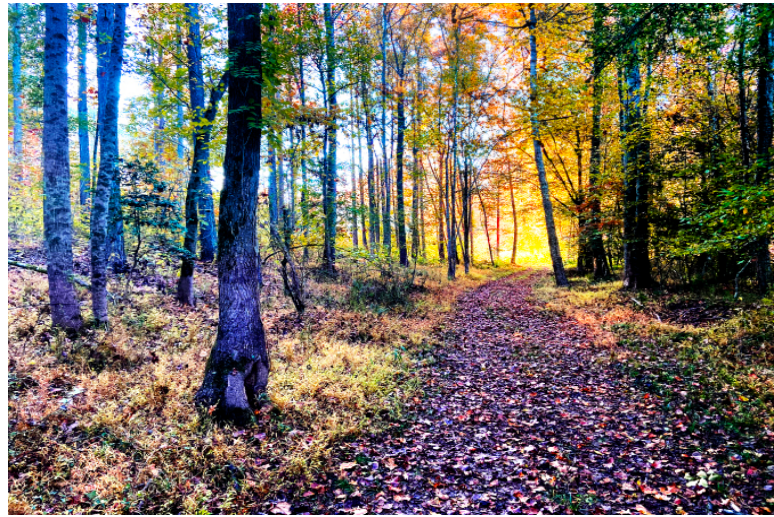
No Warranty Or Representation, Express Or Implied, Is Made As To The Accuracy Of The Information Contained Herein, And The Same Is Submitted Subject To Errors, Omissions, Change Of Price, Rental Or Other Conditions, Prior Sale, Lease Or Financing, Or Withdrawal Without Notice, And Of Any Special Listing Conditions Imposed By Our Principals No Warranties Or Representations Are Made As To The Condition Of The Property Or Any Hazards Contained Therein Are Any To Be Implied.

The Timber and Recreational Land Division of NAI Earle Furman

101 E Washington St
Greenville, SC 29601
huffcreekproperties.com

Property Photos

201 Craigo Road, Fountain Inn, SC 29644



Rusty Hamrick
+1 864 232 9040
rhamrick@naiearlefurman.com

No Warranty Or Representation, Express Or Implied, Is Made As To The Accuracy Of The Information Contained Herein, And The Same Is Submitted Subject To Errors, Omissions, Change Of Price, Rental Or Other Conditions, Prior Sale, Lease Or Financing, Or Withdrawal Without Notice, And Of Any Special Listing Conditions Imposed By Our Principals No Warranties Or Representations Are Made As To The Condition Of The Property Or Any Hazards Contained Therein Are Any To Be Implied.

The Timber and Recreational Land Division of NAI Earle Furman

101 E Washington St
Greenville, SC 29601
huffcreekproperties.com

Property Photos

201 Craigo Road, Fountain Inn, SC 29644

 **Huff Creek**
Properties



Rusty Hamrick

+1 864 232 9040

rhamrick@naiearlefurman.com

No Warranty Or Representation, Express Or Implied, Is Made As To The Accuracy Of The Information Contained Herein, And The Same Is Submitted Subject To Errors, Omissions, Change Of Price, Rental Or Other Conditions, Prior Sale, Lease Or Financing, Or Withdrawal Without Notice, And Of Any Special Listing Conditions Imposed By Our Principals No Warranties Or Rep- resentations Are Made As To The Condition Of The Property Or Any Hazards Contained Therein Are Any To Be Implied.

The Timber and Recreational Land Division of NAI Earle Furman

101 E Washington St

Greenville, SC 29601

huffcreekproperties.com

Property Photos

201 Craigo Road, Fountain Inn, SC 29644

 Huff Creek
Properties



Rusty Hamrick

+1 864 232 9040

rhamrick@naiearlefurman.com

No Warranty Or Representation, Express Or Implied, Is Made As To The Accuracy Of The Information Contained Herein, And The Same Is Submitted Subject To Errors, Omissions, Change Of Price, Rental Or Other Conditions, Prior Sale, Lease Or Financing, Or Withdrawal Without Notice, And Of Any Special Listing Conditions Imposed By Our Principals No Warranties Or Representations Are Made As To The Condition Of The Property Or Any Hazards Contained Therein Are Any To Be Implied.

The Timber and Recreational Land Division of NAI Earle Furman

101 E Washington St

Greenville, SC 29601

huffcreekproperties.com

Property Photos

201 Craigo Road, Fountain Inn, SC 29644

 **Huff Creek**
Properties



Rusty Hamrick
+1 864 232 9040
rhamrick@naiearlefurman.com

No Warranty Or Representation, Express Or Implied, Is Made As To The Accuracy Of The Information Contained Herein, And The Same Is Submitted Subject To Errors, Omissions, Change Of Price, Rental Or Other Conditions, Prior Sale, Lease Or Financing, Or Withdrawal Without Notice, And Of Any Special Listing Conditions Imposed By Our Principals No Warranties Or Representations Are Made As To The Condition Of The Property Or Any Hazards Contained Therein Are Any To Be Implied.

The Timber and Recreational Land Division of NAI Earle Furman

101 E Washington St
Greenville, SC 29601
huffcreekproperties.com

Property Photos

201 Craigo Road, Fountain Inn, SC 29644

 Huff Creek
Properties



Rusty Hamrick

+1 864 232 9040

rhamrick@naiearlefurman.com

No Warranty Or Representation, Express Or Implied, Is Made As To The Accuracy Of The Information Contained Herein, And The Same Is Submitted Subject To Errors, Omissions, Change Of Price, Rental Or Other Conditions, Prior Sale, Lease Or Financing, Or Withdrawal Without Notice, And Of Any Special Listing Conditions Imposed By Our Principals No Warranties Or Representations Are Made As To The Condition Of The Property Or Any Hazards Contained Therein Are Any To Be Implied.

The Timber and Recreational Land Division of NAI Earle Furman

101 E Washington St

Greenville, SC 29601

huffcreekproperties.com

Map Set

201 Craig Road, Fountain Inn, SC 29644



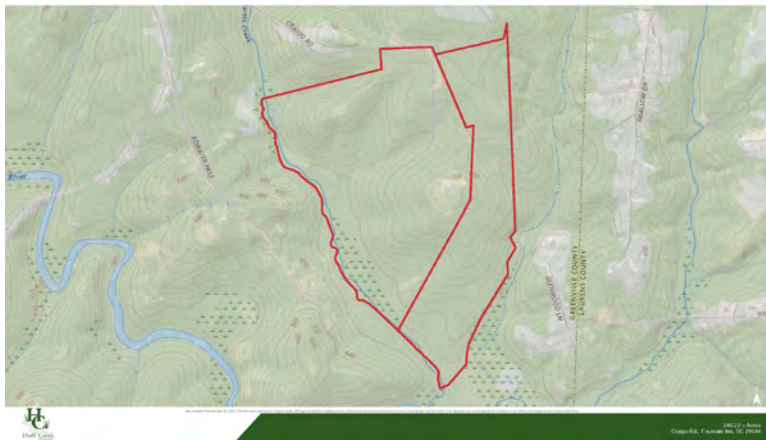
Aerial



2020 Infrared



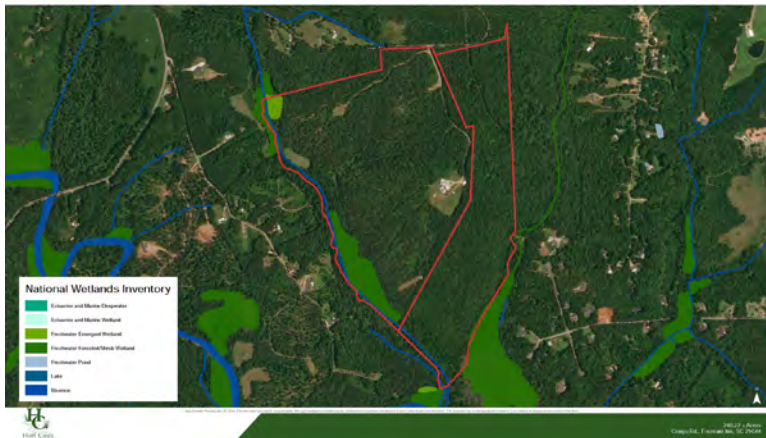
Topographical Map



FEMA Flood Zones



National Wetlands Inv.



Soil Survey



Rusty Hamrick

+1 864 232 9040

rhamrick@naiearlefurman.com

No Warranty Or Representation, Express Or Implied, Is Made As To The Accuracy Of The Information Contained Herein, And The Same Is Submitted Subject To Errors, Omissions, Change Of Price, Rental Or Other Conditions, Prior Sale, Lease Or Financing, Or Withdrawal Without Notice, And Of Any Special Listing Conditions Imposed By Our Principals No Warranties Or Representations Are Made As To The Condition Of The Property Or Any Hazards Contained Therein Are Any To Be Implied.

The Timber and Recreational Land Division of NAI Earle Furman

101 E Washington St

Greenville, SC 29601

huffcreekproperties.com