

**65.5± ACRES**  
**KEMPER COUNTY, MS**  
**\$78,000**



**SMALLTOWN**  
HUNTING PROPERTIES  
& REAL ESTATE<sup>SM</sup>

**OFFICE (769) 760-0005**



# THE KEMPER 65.5

## PROPERTY PROFILE

### LOCATION:

- Kemper County, MS
- Access on Highway 39
- 1.9± Miles N of De Kalb
- 32.5± Miles N of Meridian

### COORDINATES:

- 36± Acres:  
32.788, -88.66716
- 29.5± Acres:  
32.79311, -88.67261

### PROPERTY USE:

- Hunting
- Recreational

### PROPERTY INFORMATION:

- 65.5± Total Acres
- 36± Acres with Access on Highway 39
- 29.5± Acres with no Deeded Access
- Mixed Hardwoods and Pines
- Bottomland with a Creek Leading to Sucarnoochee River
- Deer/Turkey/Small Game

### TAX INFORMATION:

- Parcel 075-21-17.000:  
\$98.77 for 2023
- Parcel 075-21-14.000:  
\$77.04 for 2023



**DENNIS WEST** | MANAGING BROKER  
C: 601-248-4396 | [dennis@smalltownproperties.com](mailto:dennis@smalltownproperties.com)

**DEREK EAVES** | LAND SPECIALIST  
C: 662-803-2001 | [derek@smalltownproperties.com](mailto:derek@smalltownproperties.com)

2121 5th St., Ste 206 - Meridian, MS 39301 | O: 769-760-0005 | [smalltownproperties.com](http://smalltownproperties.com) Information is believed to be accurate but not guaranteed.



# WELCOME TO THE KEMPER 65.5

**WELCOME TO YOUR FUTURE RECREATIONAL RETREAT!** Located just north of DeKalb in Kemper County, Mississippi, this 65.5± acre gem is brimming with potential and waiting for its next owner. Untouched for the past 14 years, this property is a pristine outdoor playground for hunting.

The land boasts rolling hills and natural hollows, leading down to a peaceful bottomland and creek on the western edge. The landscape features a variety of towering hardwoods, including oaks that drop plenty of acorns, along with sweetgum and pine trees. As you cross the first ridge, you're greeted by a stunning, open scene that feels like the good ol' days. The creek bottomland offers perfect bedding areas for deer, and signs of wildlife are abundant throughout. Well-worn deer trails crisscross the property, running along the creek edges and up and down the ridges. For the turkey hunter, feathers were scattered around promising exciting springtime hunts.



**DENNIS WEST** | MANAGING BROKER  
C: 601-248-4396 | [dennis@smalltownproperties.com](mailto:dennis@smalltownproperties.com)



**DEREK EAVES** | LAND SPECIALIST  
C: 662-803-2001 | [derek@smalltownproperties.com](mailto:derek@smalltownproperties.com)



# MORE ABOUT THE KEMPER 65.5

At this price point, you'll have room in your budget to bring in a dozer and create easy access paths throughout the property, allowing you to explore and enjoy every inch of this hidden gem. If you are looking for a fun recreational property, the Kemper 65.5 is worth considering! DeKalb is less than two miles away and Meridian is only 32.5 miles away. *DISCLAIMER: There is no legal access on a portion of the property.*

**To schedule a private showing,  
call Derek Eaves or Dennis West today.**



**DENNIS WEST** | MANAGING BROKER  
C: 601-248-4396 | [dennis@smalltownproperties.com](mailto:dennis@smalltownproperties.com)

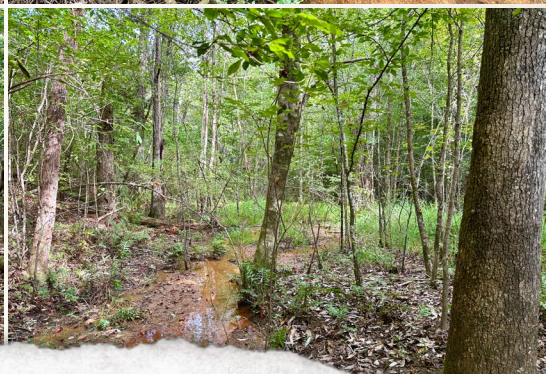


**DEREK EAVES** | LAND SPECIALIST  
C: 662-803-2001 | [derek@smalltownproperties.com](mailto:derek@smalltownproperties.com)



**65.5 ± ACRES**

**KEMPER COUNTY, MISSISSIPPI**



**DENNIS WEST** | MANAGING BROKER  
C: 601-248-4396 | [dennis@smalltownproperties.com](mailto:dennis@smalltownproperties.com)

**DEREK EAVES** | LAND SPECIALIST  
C: 662-803-2001 | [derek@smalltownproperties.com](mailto:derek@smalltownproperties.com)

2121 5th St., Ste 206 - Meridian, MS 39301 | O: 769-760-0005 | [smalltownproperties.com](http://smalltownproperties.com) Information is believed to be accurate but not guaranteed.



**65.5 ± ACRES**

**KEMPER COUNTY, MISSISSIPPI**



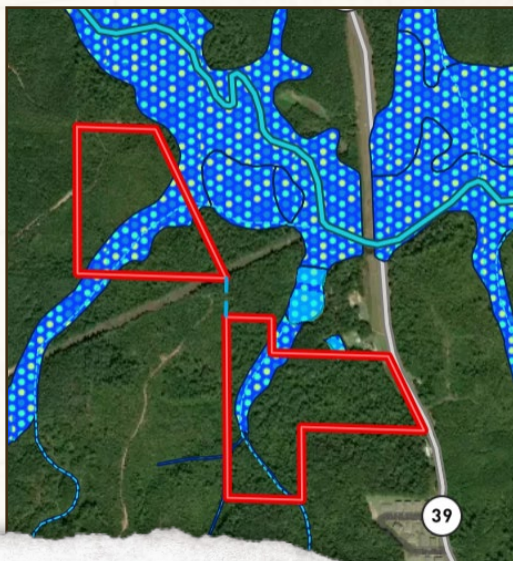
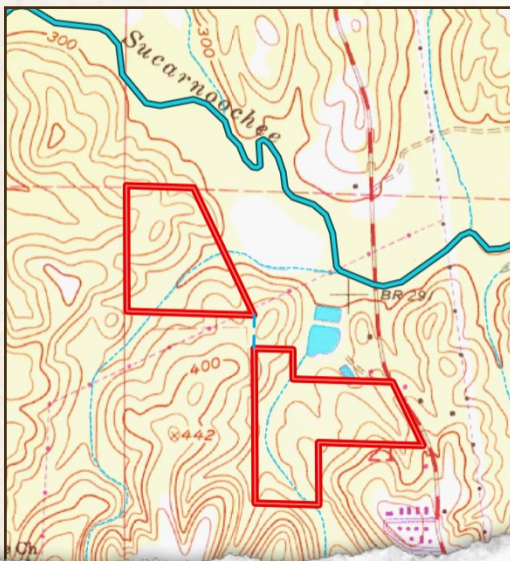
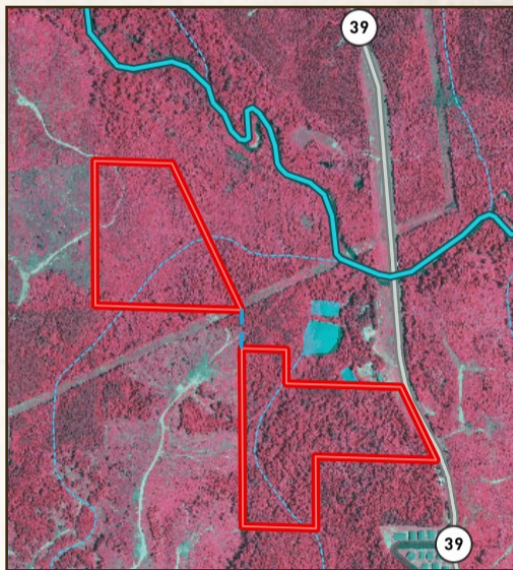
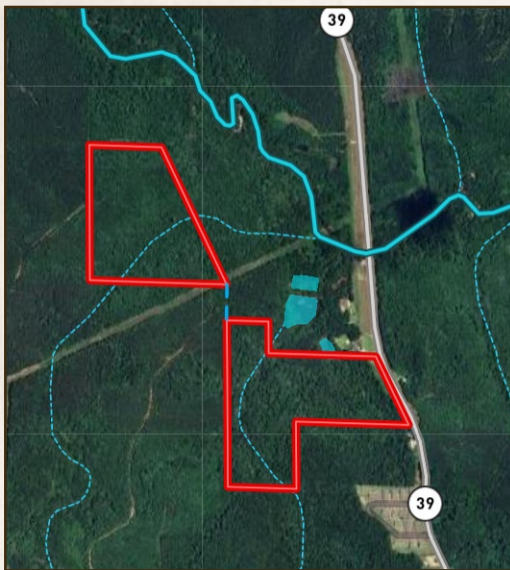
**DENNIS WEST** | MANAGING BROKER  
C: 601-248-4396 | [dennis@smalltownproperties.com](mailto:dennis@smalltownproperties.com)



**DEREK EAVES** | LAND SPECIALIST  
C: 662-803-2001 | [derek@smalltownproperties.com](mailto:derek@smalltownproperties.com)



**65.5 ± ACRES**    **KEMPER COUNTY, MISSISSIPPI**



**DENNIS WEST** | MANAGING BROKER  
C: 601-248-4396 | [dennis@smalltownproperties.com](mailto:dennis@smalltownproperties.com)

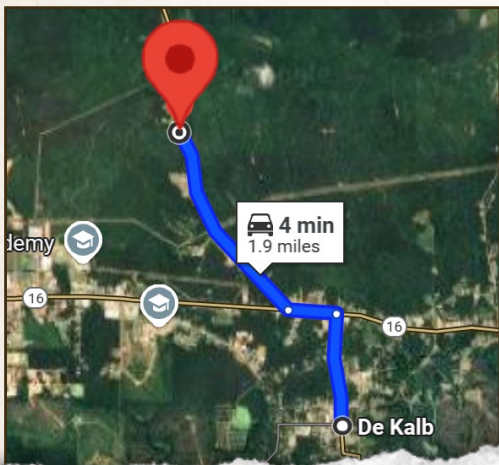
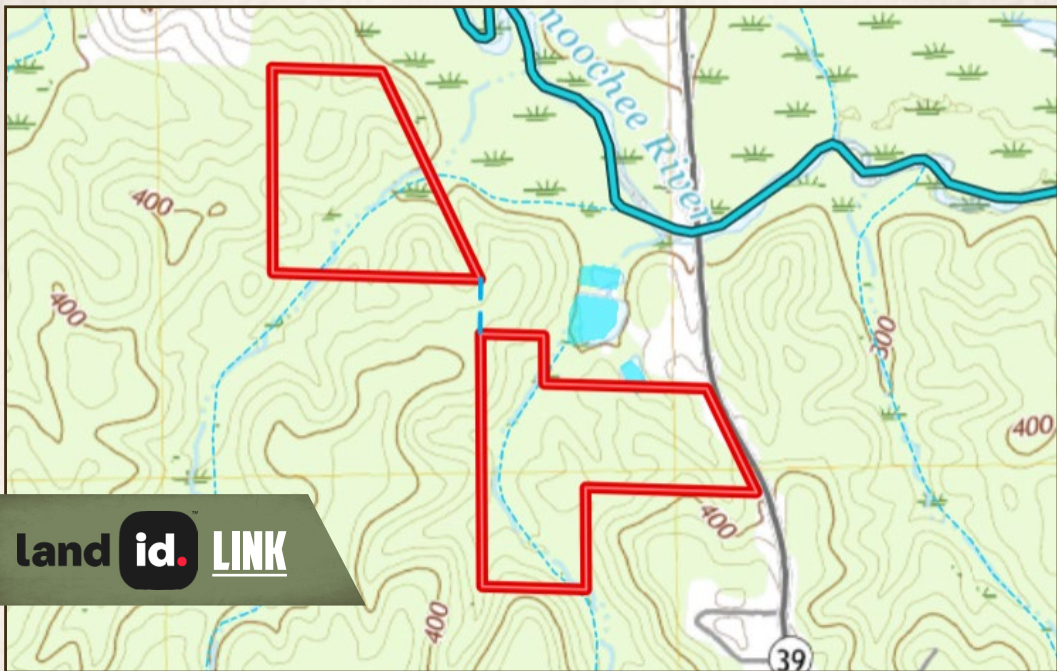
**DEREK EAVES** | LAND SPECIALIST  
C: 662-803-2001 | [derek@smalltownproperties.com](mailto:derek@smalltownproperties.com)

2121 5th St., Ste 206 - Meridian, MS 39301 | O: 769-760-0005 | [smalltownproperties.com](http://smalltownproperties.com) Information is believed to be accurate but not guaranteed.



65.5 ± ACRES

KEMPER COUNTY, MISSISSIPPI



Directions from De Kalb, MS:  
Travel north on Main Avenue  
for 0.6 miles. Turn left onto  
Highway 16 and continue for  
0.2 miles, then turn right onto  
Highway 39. Proceed for 1.1  
miles and the property/sign will  
be on the left.

[\*\*LINK TO GOOGLE MAP DIRECTIONS\*\*](#)



**DENNIS WEST** | MANAGING BROKER  
C: 601-248-4396 | [dennis@smalltownproperties.com](mailto:dennis@smalltownproperties.com)



**DEREK EAVES** | LAND SPECIALIST  
C: 662-803-2001 | [derek@smalltownproperties.com](mailto:derek@smalltownproperties.com)