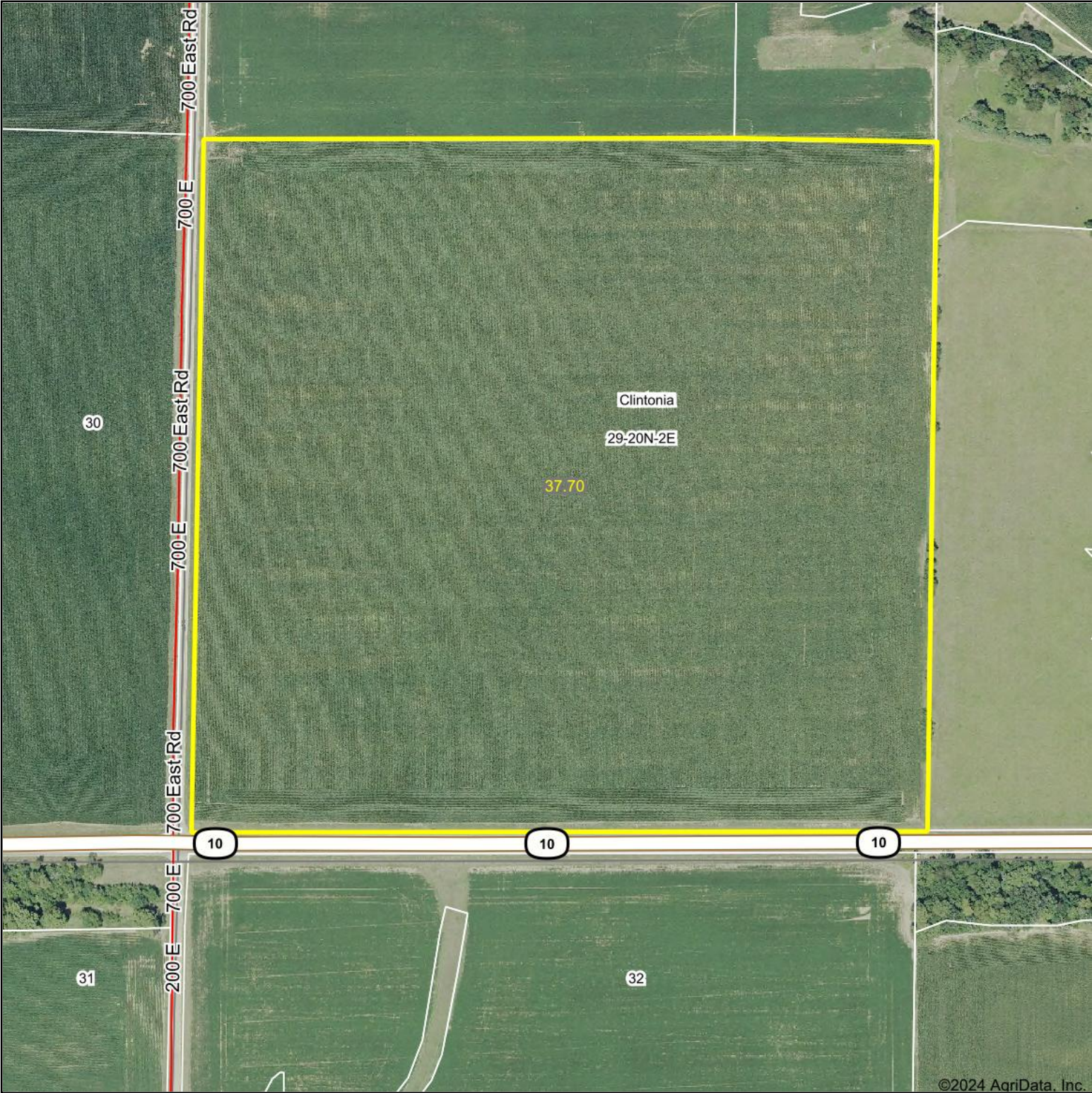


Aerial Map



Boundary Center: 40° 9' 18.87, -89° 0' 38.46



FIRST ILLINOIS  
AG GROUP

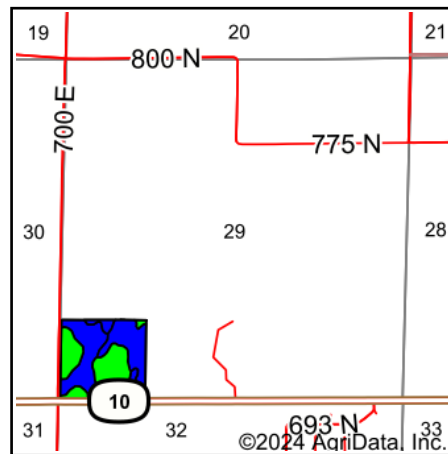
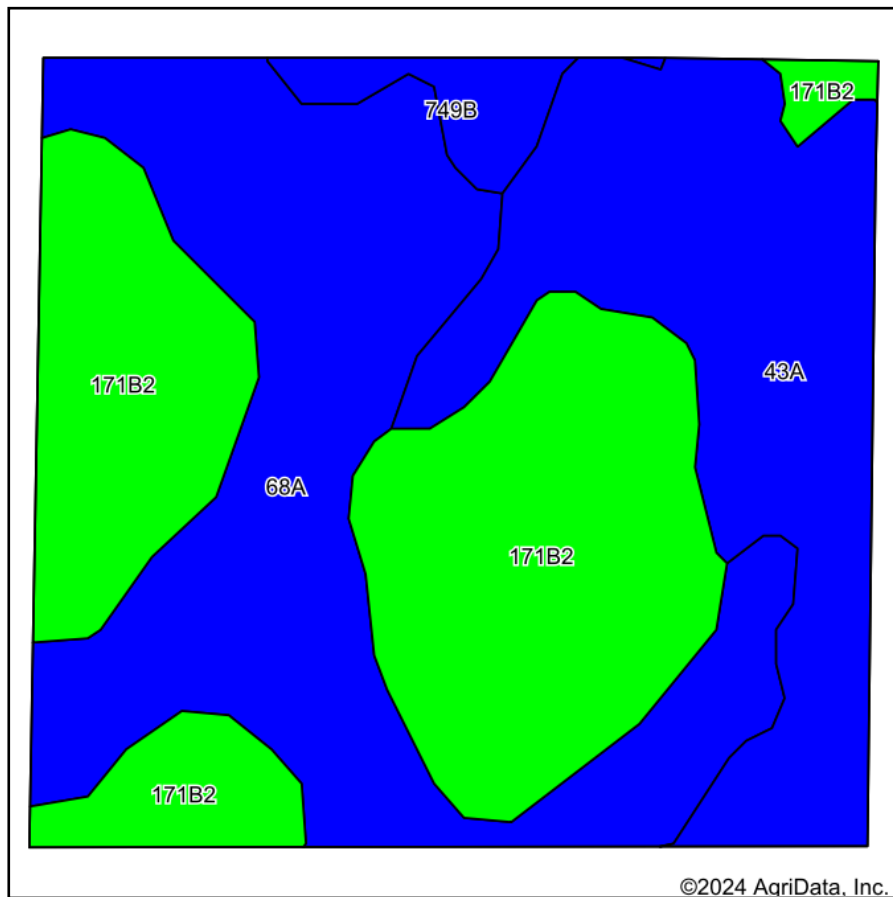


29-20N-2E  
De Witt County  
Illinois



9/16/2024

# Soils Map



State: **Illinois**  
 County: **De Witt**  
 Location: **29-20N-2E**  
 Township: **Clintonia**  
 Acres: **37.44**  
 Date: **9/16/2024**

FIRST ILLINOIS  
AG GROUP

Maps Provided By:  
  
 CUSTOMIZED ONLINE MAPPING  
 © AgriData, Inc. 2023 www.AgriDataInc.com



Area Symbol: IL039, Soil Area Version: 15

Code	Soil Description	Acres	Percent of field	II. State Productivity Index Legend	Subsoil rooting <sup>a</sup>	Corn Bu/A	Soybeans Bu/A	Wheat Bu/A	Oats Bu/A <sup>b</sup>	Sorghum <sup>c</sup> Bu/A	Grass-legume <sup>e</sup> hay, T/A	Crop productivity index for optimum management
**171B2	Catlin silt loam, 2 to 5 percent slopes, eroded	13.92	37.1%		FAV	**178	**56	**69	**94	0	**6.50	**131
**68A	Sable silty clay loam, 0 to 2 percent slopes	12.90	34.5%		FAV	**192	**63	**74	**99	0	**5.80	**143
43A	Ipava silt loam, 0 to 2 percent slopes	9.55	25.5%		FAV	191	62	77	100	0	5.90	142
**749B	Buckhart silt loam, till substratum, 2 to 5 percent slopes	1.07	2.9%		FAV	**188	**60	**73	**99	0	**7.30	**141
Weighted Average						186.4	60.1	72.9	97.4	*-	6.1	138.2

**Table: Optimum Crop Productivity Ratings for Illinois Soil EFOTG are sourced from Bulletin 811 calculated Map Unit Base Yield Indices, and adjusted (Adj) for slope, erosion, flooding, and surface texture.** Publication Date: 02-08-2023

Crop yields and productivity (B811 EFOTG) are maintained at the following USDA web site: 2023 Illinois Soil Productivity and Yield Indices: <https://efotg.sc.egov.usda.gov/#/state/IL/documents/section=2&folder=52809>

\*\* Base indexes from Bulletin 811 adjusted for slope, erosion, flooding, and surface texture according to the II. Soils EFOTG

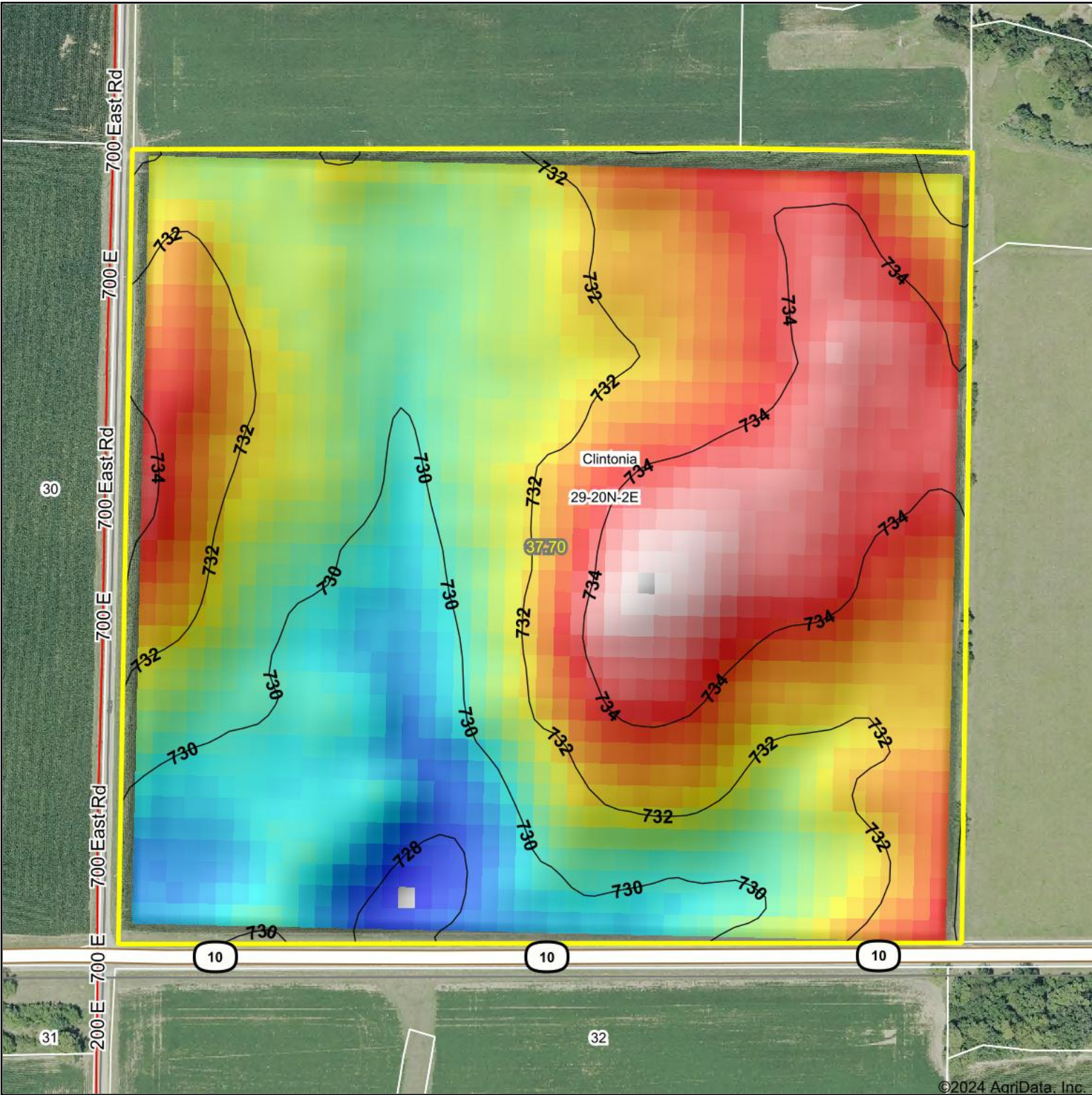
<sup>b</sup> Soils in the southern region were not rated for oats and are shown with a zero "0".

<sup>c</sup> Soils in the northern region or in both regions were not rated for grain sorghum and are shown with a zero "0".

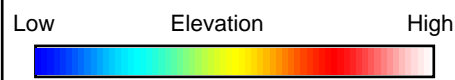
<sup>e</sup> Soils in the well drained group were not rated for grass-legume and are shown with a zero "0".



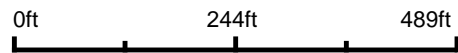
# Topography Hillshade



©2024 AgriData, Inc.



Source: USGS 10 meter dem  
Interval(ft): 2  
Min: 727.4  
Max: 736.0  
Range: 8.6  
Average: 731.8  
Standard Deviation: 1.9 ft



**29-20N-2E**  
**De Witt County**  
**Illinois**

Boundary Center: 40° 9' 18.87, -89° 0' 38.46

FIRST ILLINOIS  
AG GROUP

Maps Provided By:



© AgriData, Inc. 2023

www.AgriDataInc.com

Field borders provided by Farm Service Agency as of 5/21/2008.