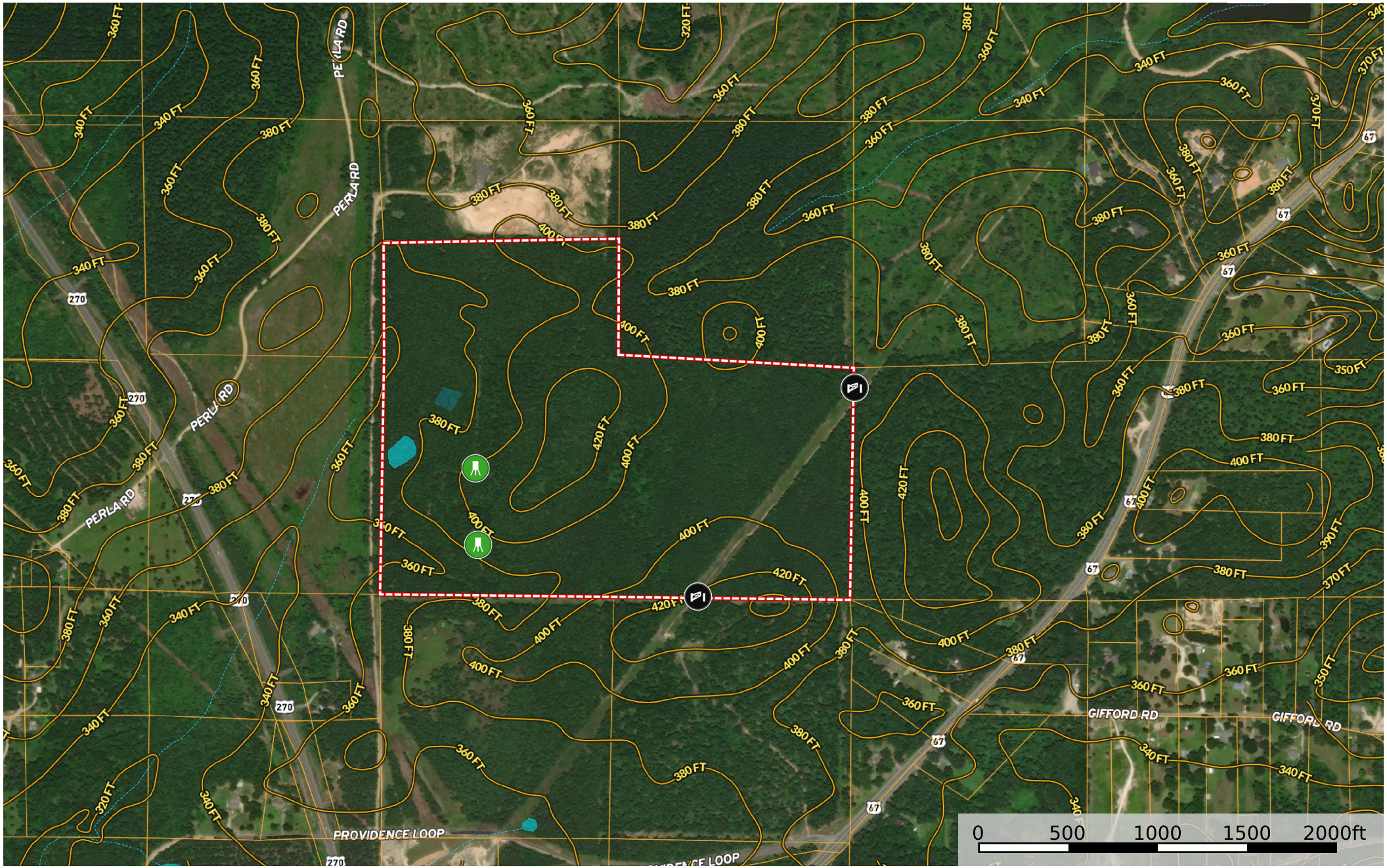


Hot Spring 100- Perla

Hot Spring County, Arkansas, 100 AC +/-



- Feeder
- Gate
- Pond / Tank
- Boundary
- 100 Year Floodplain
- 500 Year Floodplain
- Floodway
- Special
- Unmapped/ Not Included
- Stream, Intermittent
- River/Creek
- Water Body