

# Persimmon Knob Tract A | 30 ± Acres



## For Sale

\$225,000

## About the Property

Discover your dream home location on this breathtaking 30-acre tract, part of a larger 200-acre parcel in Morgan County, AL. Nestled on the top of Gum Pond Road, this property offers unparalleled views that will captivate you from the moment you arrive. The property was clear cut this past year leaving a perfect blank canvas, whether you envision a sprawling estate, a cozy country retreat, or a modern masterpiece.

If you want more acreage 4 other lots are available.

The newly offered tracts have yet to be surveyed off the original 200-acre parcel. Final Approval from the Morgan County Commission Chairman will be required.

Don't miss this rare opportunity to own a piece of paradise in Morgan County. Contact us today for more information and to schedule a viewing.

## Facts and Features

**Morgan County, Alabama**

0 Gum Pond Road Eva, AL 35621

30 ± Acres

Best Use: Residential

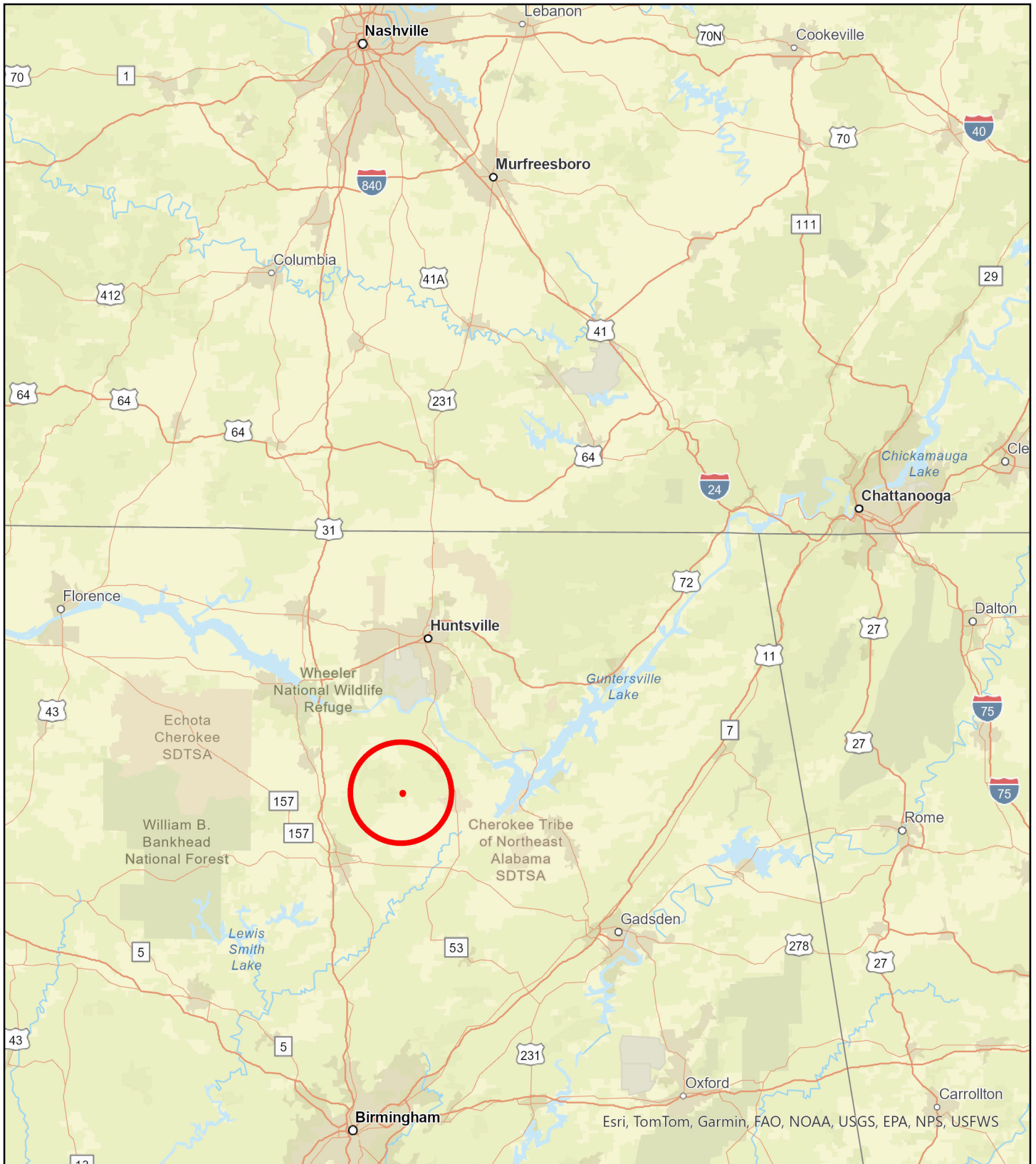


**SOUTH MAIN  
LAND REALTY**

**Hayden Reed**

Office: (256) 383-8990 | Cell: (256) 740-2494  
soldbyhayden@southmainrealty.com

Stephan Tomlinson, Broker



## Legend

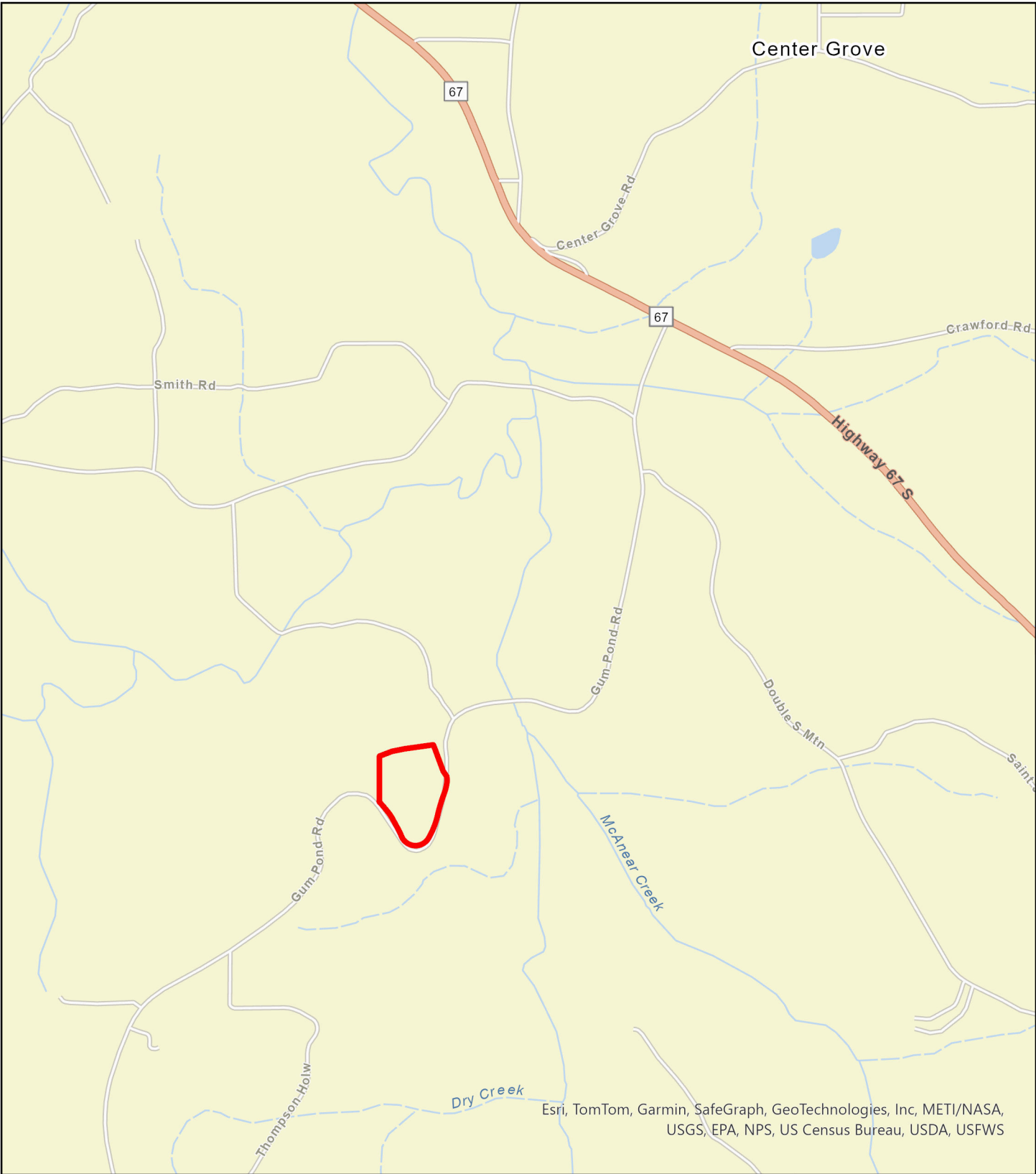
 MGT03a

## MGT03a Morgan County, AL General Location

South Main Land Realty | (256) 383-8990



0 15 30 Miles



**Legend**

 MGT03a

**MGT03a**  
**Morgan County, AL**  
**Local Roads**

South Main Land Realty | (256) 383-8990



0 1,500 3,000 Feet



Maxar, Microsoft

**Legend**

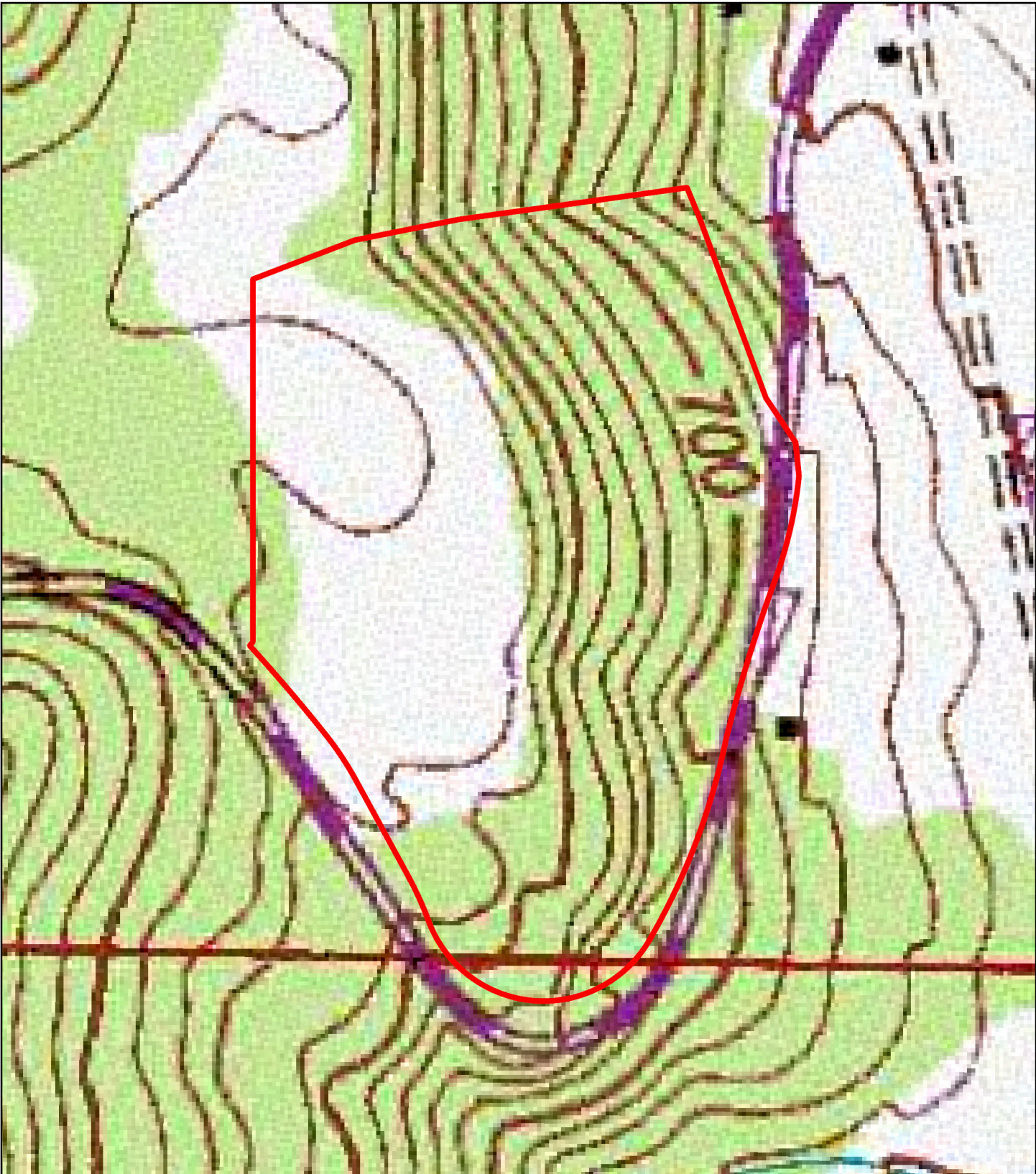
 MGT03a

**MGT03a**  
**Morgan County, AL**  
**Aerial**

South Main Land Realty | (256) 383-8990



0 225 450 Feet



**Legend**

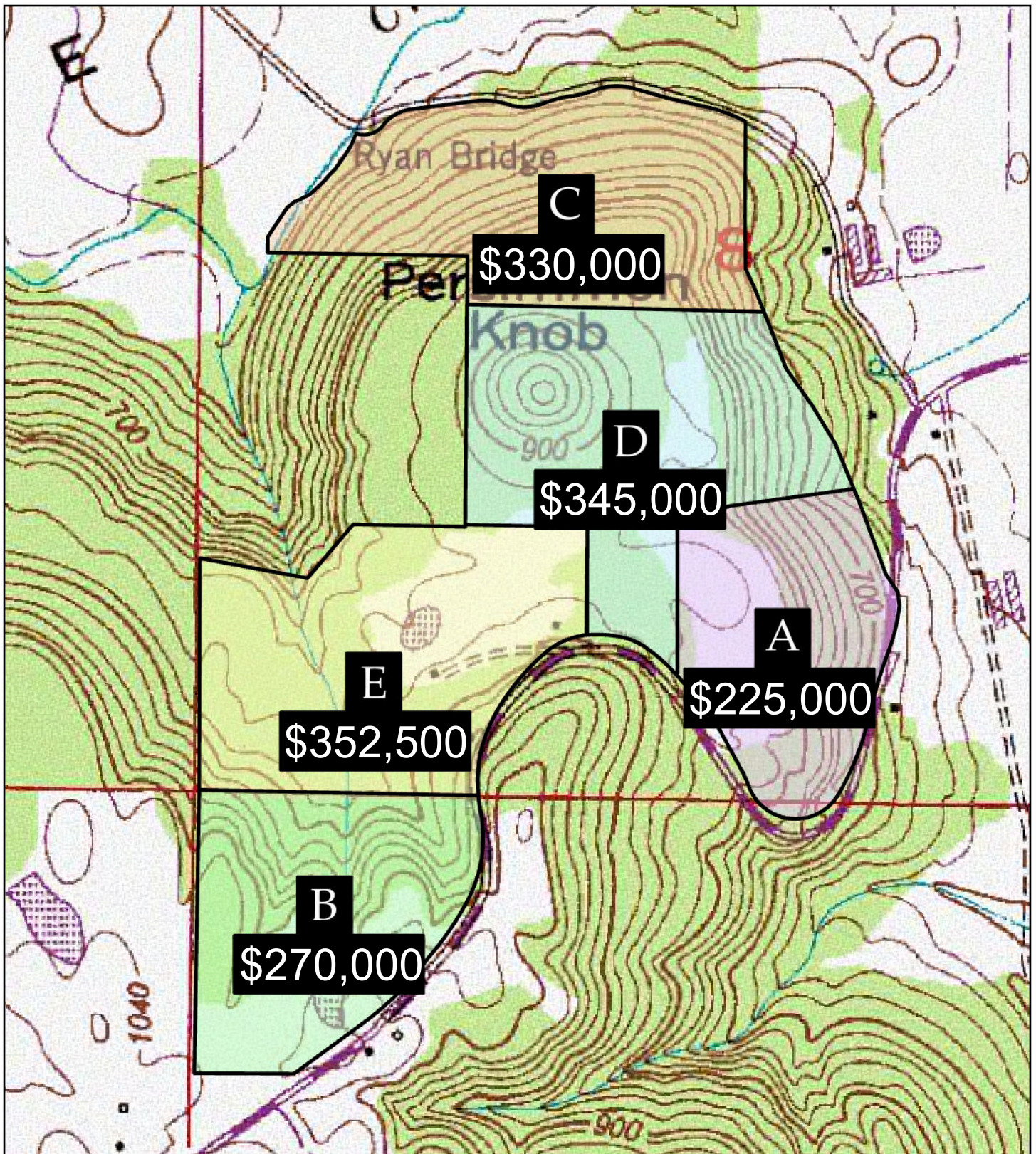
 MGT03a

**MGT03a**  
**Morgan County, AL**  
**Topo**

South Main Land Realty | (256) 383-8990



0 225 450 Feet



### Legend

- MGT03a 30± Acres
- MGT03b 36± Acres
- MGT03c 44± Acres
- MGT03d 46± Acres
- MGT03e 47± Acres

### MGT03 Morgan County, AL Available Tracts

South Main Land Realty | (256) 383-8990



0 500 1,000 Feet