

Persimmon Knob Tract C | 44 ± Acres



For Sale

\$330,000

About the Property

Discover your dream home location on this breathtaking 44-acre tract, part of a larger 200-acre parcel in Morgan County, AL. Nestled on Martin Road, this property offers unparalleled views that will captivate you from the moment you arrive. Most of the property was clear cut this past year leaving a perfect blank canvas, whether you envision a sprawling estate, a cozy country retreat, or a modern masterpiece. West Fork Cotaco Creek also runs along the west boundary line of the property.

If you want more acreage 4 other lots are available.

The newly offered tracts have yet to be surveyed off the original 200-acre parcel. Final Approval from the Morgan County Commission Chairman will be required.

Don't miss this rare opportunity to own a piece of paradise in Morgan County. Contact us today for more information and to schedule a viewing.

Facts and Features

Morgan County, Alabama

0 Gum Pond Road Eva, AL 35621

44 ± Acres

Best Use: Residential



**SOUTH MAIN
LAND REALTY**

Hayden Reed

Office: (256) 383-8990 | Cell: (256) 740-2494
soldbyhayden@southmainrealty.com

Stephan Tomlinson, Broker



Legend

 MGT03c

MGT03c Morgan County, AL Local Roads

South Main Land Realty | (256) 383-8990



0 3,000 6,000 Feet



Legend

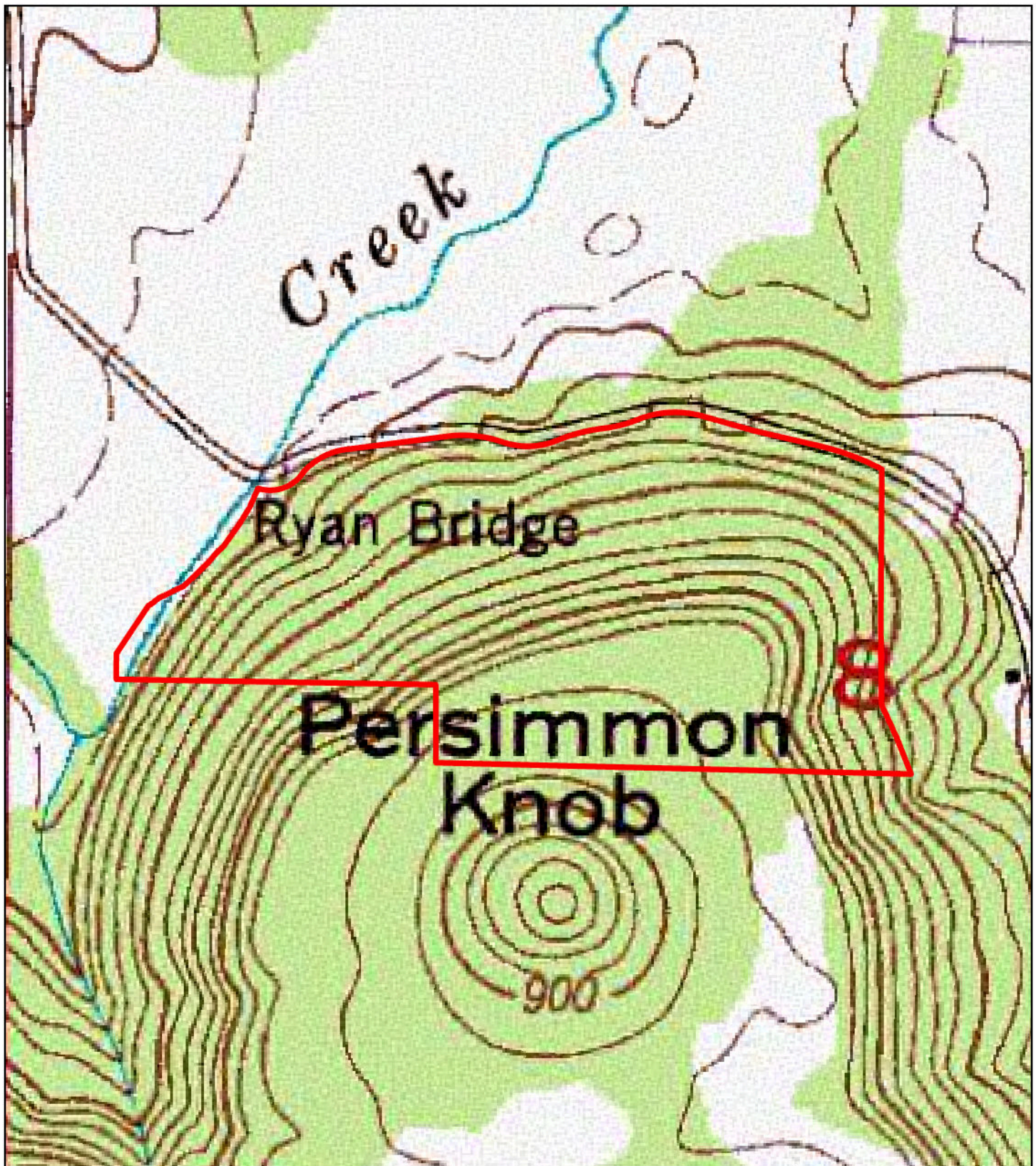
 MGT03c

MGT03c
Morgan County, AL
Aerial

South Main Land Realty | (256) 383-8990



0 340 680 Feet



Legend

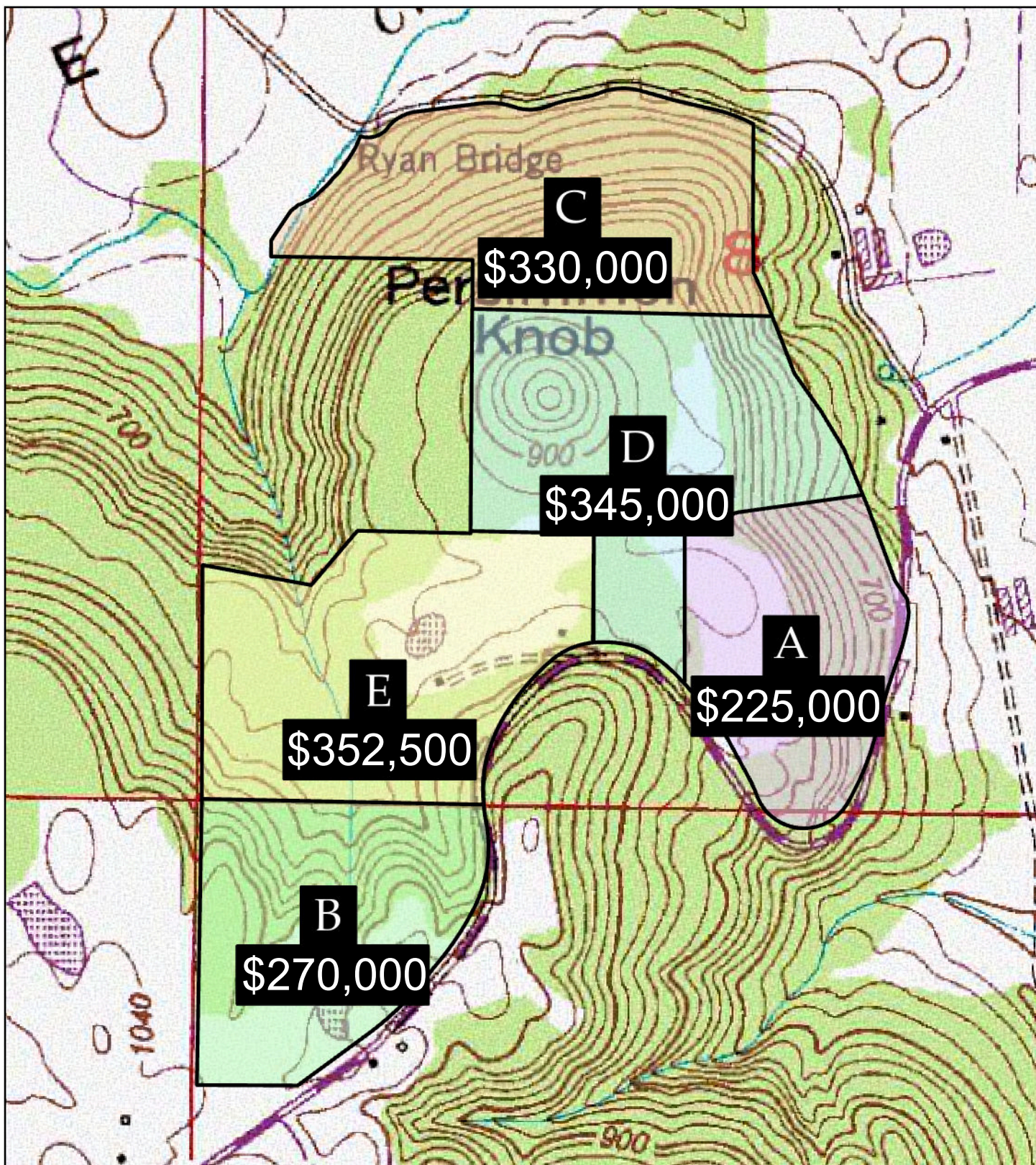
 MGT03c

MGT03c
Morgan County, AL
Topo

South Main Land Realty | (256) 383-8990



0 340 680 Feet



Legend

- MGT03a 30± Acres
- MGT03b 36± Acres
- MGT03c 44± Acres
- MGT03d 46± Acres
- MGT03e 47± Acres

MGT03 Morgan County, AL Available Tracts

South Main Land Realty | (256) 383-8990



0 500 1,000 Feet