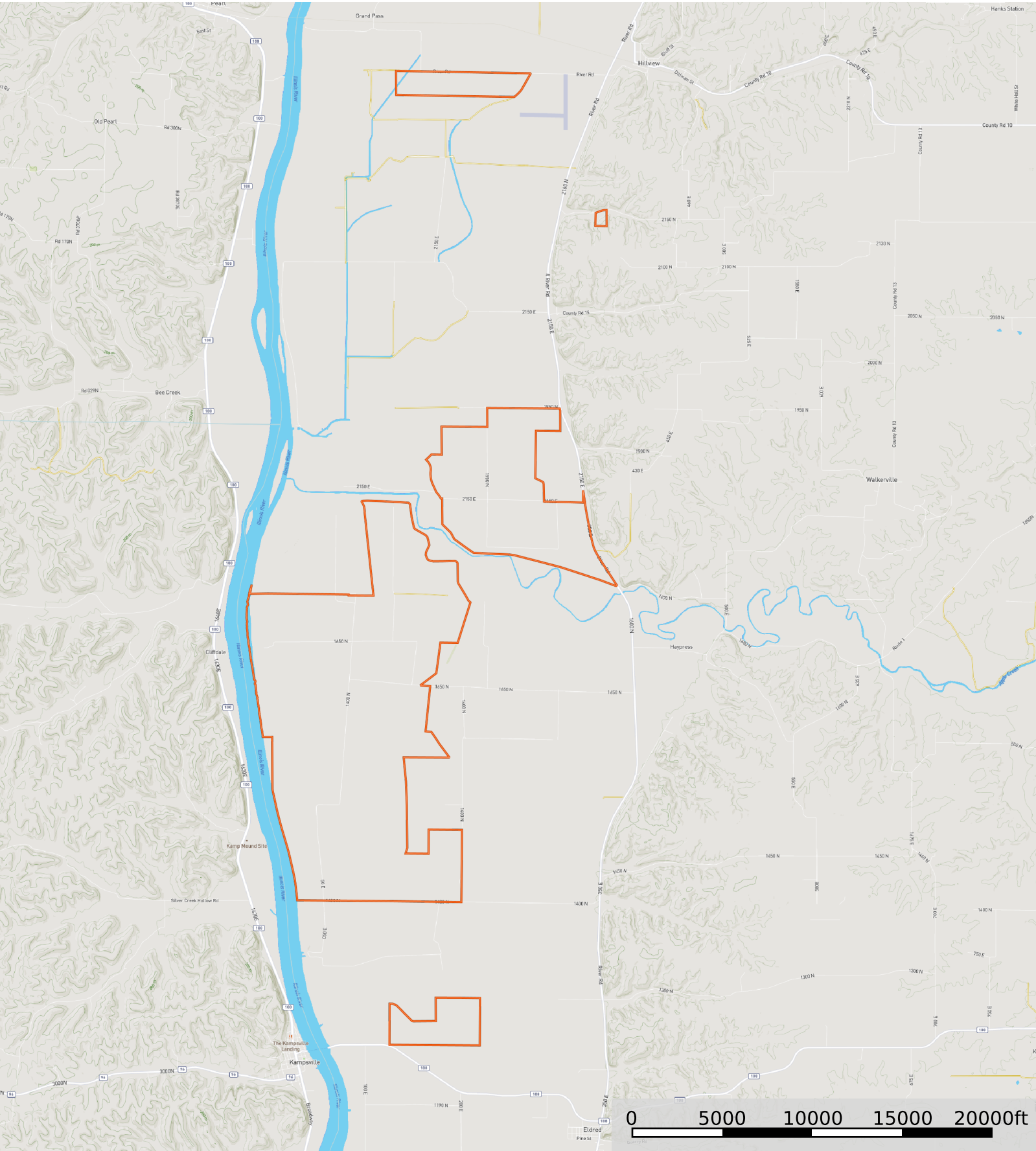


Adwell
Illinois, AC +/-



 Adwell

This is an aerial map of a rural area in Illinois, featuring a large orange-outlined polygon that delineates a specific land parcel. The parcel is situated along the Illinois River, which flows from the top left towards the bottom center. To the left of the river, Bee Creek and Silver Creek Hollow Rd are visible. The parcel itself is irregularly shaped, with its eastern boundary following the river and its western boundary extending inland. The map is overlaid with a grid of section numbers, including 1950 N, 1960 N, 1970 N, 2150 E, 2160 E, 2170 E, 1650 N, 1660 N, 1670 N, 1400 N, 1410 N, 1420 N, 1430 N, 1440 N, 1450 N, 1460 N, 1470 N, 1480 N, 1490 N, 1500 N, 1510 N, 1520 N, 1530 N, 1540 N, 1550 N, 1560 N, 1570 N, 1580 N, 1590 N, 1600 N, 1610 N, 1620 N, 1630 N, 1640 N, 1650 N, 1660 N, 1670 N, 1680 N, 1690 N, 1700 N, 1710 N, 1720 N, 1730 N, 1740 N, 1750 N, 1760 N, 1770 N, 1780 N, 1790 N, 1800 N, 1810 N, 1820 N, 1830 N, 1840 N, 1850 N, 1860 N, 1870 N, 1880 N, 1890 N, 1900 N, 1910 N, 1920 N, 1930 N, 1940 N, 1950 N, 1960 N, 1970 N, 1980 N, 1990 N, 2000 N, 2010 N, 2020 N, 2030 N, 2040 N, 2050 N, 2060 N, 2070 N, 2080 N, 2090 N, 2100 N, 2110 N, 2120 N, 2130 N, 2140 N, 2150 N, 2160 N, 2170 N, 2180 N, 2190 N, 2200 N, 2210 N, 2220 N, 2230 N, 2240 N, 2250 N, 2260 N, 2270 N, 2280 N, 2290 N, 2300 N, 2310 N, 2320 N, 2330 N, 2340 N, 2350 N, 2360 N, 2370 N, 2380 N, 2390 N, 2400 N, 2410 N, 2420 N, 2430 N, 2440 N, 2450 N, 2460 N, 2470 N, 2480 N, 2490 N, 2500 N, 2510 N, 2520 N, 2530 N, 2540 N, 2550 N, 2560 N, 2570 N, 2580 N, 2590 N, 2600 N, 2610 N, 2620 N, 2630 N, 2640 N, 2650 N, 2660 N, 2670 N, 2680 N, 2690 N, 2700 N, 2710 N, 2720 N, 2730 N, 2740 N, 2750 N, 2760 N, 2770 N, 2780 N, 2790 N, 2800 N, 2810 N, 2820 N, 2830 N, 2840 N, 2850 N, 2860 N, 2870 N, 2880 N, 2890 N, 2900 N, 2910 N, 2920 N, 2930 N, 2940 N, 2950 N, 2960 N, 2970 N, 2980 N, 2990 N, 3000 N, 3010 N, 3020 N, 3030 N, 3040 N, 3050 N, 3060 N, 3070 N, 3080 N, 3090 N, 3100 N, 3110 N, 3120 N, 3130 N, 3140 N, 3150 N, 3160 N, 3170 N, 3180 N, 3190 N, 3200 N, 3210 N, 3220 N, 3230 N, 3240 N, 3250 N, 3260 N, 3270 N, 3280 N, 3290 N, 3300 N, 3310 N, 3320 N, 3330 N, 3340 N, 3350 N, 3360 N, 3370 N, 3380 N, 3390 N, 3400 N, 3410 N, 3420 N, 3430 N, 3440 N, 3450 N, 3460 N, 3470 N, 3480 N, 3490 N, 3500 N, 3510 N, 3520 N, 3530 N, 3540 N, 3550 N, 3560 N, 3570 N, 3580 N, 3590 N, 3600 N, 3610 N, 3620 N, 3630 N, 3640 N, 3650 N, 3660 N, 3670 N, 3680 N, 3690 N, 3700 N, 3710 N, 3720 N, 3730 N, 3740 N, 3750 N, 3760 N, 3770 N, 3780 N, 3790 N, 3800 N, 3810 N, 3820 N, 3830 N, 3840 N, 3850 N, 3860 N, 3870 N, 3880 N, 3890 N, 3900 N, 3910 N, 3920 N, 3930 N, 3940 N, 3950 N, 3960 N, 3970 N, 3980 N, 3990 N, 4000 N, 4010 N, 4020 N, 4030 N, 4040 N, 4050 N, 4060 N, 4070 N, 4080 N, 4090 N, 4100 N, 4110 N, 4120 N, 4130 N, 4140 N, 4150 N, 4160 N, 4170 N, 4180 N, 4190 N, 4200 N, 4210 N, 4220 N, 4230 N, 4240 N, 4250 N, 4260 N, 4270 N, 4280 N, 4290 N, 4300 N, 4310 N, 4320 N, 4330 N, 4340 N, 4350 N, 4360 N, 4370 N, 4380 N, 4390 N, 4400 N, 4410 N, 4420 N, 4430 N, 4440 N, 4450 N, 4460 N, 4470 N, 4480 N, 4490 N, 4500 N, 4510 N, 4520 N, 4530 N, 4540 N, 4550 N, 4560 N, 4570 N, 4580 N, 4590 N, 4600 N, 4610 N, 4620 N, 4630 N, 4640 N, 4650 N, 4660 N, 4670 N, 4680 N, 4690 N, 4700 N, 4710 N, 4720 N, 4730 N, 4740 N, 4750 N, 4760 N, 4770 N, 4780 N, 4790 N, 4800 N, 4810 N, 4820 N, 4830 N, 4840 N, 4850 N, 4860 N, 4870 N, 4880 N, 4890 N, 4900 N, 4910 N, 4920 N, 4930 N, 4940 N, 4950 N, 4960 N, 4970 N, 4980 N, 4990 N, 5000 N, 5010 N, 5020 N, 5030 N, 5040 N, 5050 N, 5060 N, 5070 N, 5080 N, 5090 N, 5100 N, 5110 N, 5120 N, 5130 N, 5140 N, 5150 N, 5160 N, 5170 N, 5180 N, 5190 N, 5200 N, 5210 N, 5220 N, 5230 N, 5240 N, 5250 N, 5260 N, 5270 N, 5280 N, 5290 N, 5300 N, 5310 N, 5320 N, 5330 N, 5340 N, 5350 N, 5360 N, 5370 N, 5380 N, 5390 N, 5400 N, 5410 N, 5420 N, 5430 N, 5440 N, 5450 N, 5460 N, 5470 N, 5480 N, 5490 N, 5500 N, 5510 N, 5520 N, 5530 N, 5540 N, 5550 N, 5560 N, 5570 N, 5580 N, 5590 N, 5600 N, 5610 N, 5620 N, 5630 N, 5640 N, 5650 N, 5660 N, 5670 N, 5680 N, 5690 N, 5700 N, 5710 N, 5720 N, 5730 N, 5740 N, 5750 N, 5760 N, 5770 N, 5780 N, 5790 N, 5800 N, 5810 N, 5820 N, 5830 N, 5840 N, 5850 N, 5860 N, 5870 N, 5880 N, 5890 N, 5900 N, 5910 N, 5920 N, 5930 N, 5940 N, 5950 N, 5960 N, 5970 N, 5980 N, 5990 N, 6000 N, 6010 N, 6020 N, 6030 N, 6040 N, 6050 N, 6060 N, 6070 N, 6080 N, 6090 N, 6100 N, 6110 N, 6120 N, 6130 N, 6140 N, 6150 N, 6160 N, 6170 N, 6180 N, 6190 N, 6200 N, 6210 N, 6220 N, 6230 N, 6240 N, 6250 N, 6260 N, 6270 N, 6280 N, 6290 N, 6300 N, 6310 N, 6320 N, 6330 N, 6340 N, 6350 N, 6360 N, 6370 N, 6380 N, 6390 N, 6400 N, 6410 N, 6420 N, 6430 N, 6440 N, 6450 N, 6460 N, 6470 N, 6480 N, 6490 N, 6500 N, 6510 N, 6520 N, 6530 N, 6540 N, 6550 N, 6560 N, 6570 N, 6580 N, 6590 N, 6600 N, 6610 N, 6620 N, 6630 N, 6640 N, 6650 N, 6660 N, 6670 N, 6680 N, 6690 N, 6700 N, 6710 N, 6720 N, 6730 N, 6740 N, 6750 N, 6760 N, 6770 N, 6780 N, 6790 N, 6800 N, 6810 N, 6820 N, 6830 N, 6840 N, 6850 N, 6860 N, 6870 N, 6880





