



United States
Department of
Agriculture

Benson County, North Dakota

Farm 634

S26 T154N R68W

Phy Cnty: Benson

2024 Program Year

Map Created April 23, 2024



0 320 640 1,280
Feet

Unless Otherwise Noted:

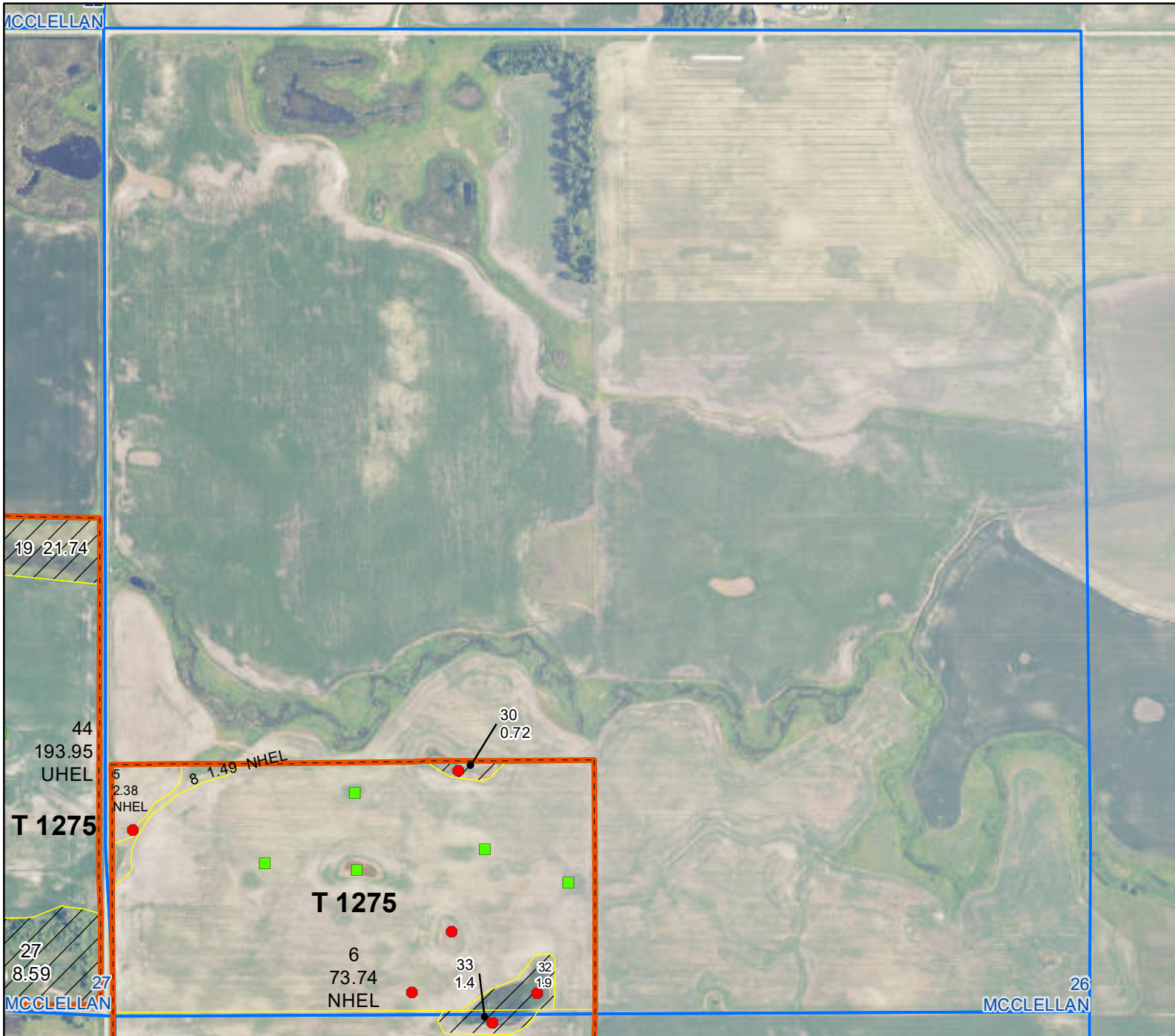
Barley = Spring for Grain
Canola = Spring for Processing
Corn = Yellow for Grain
Flax = Common for Grain
Oats = Spring for Grain
Soybeans = Common for Grain
Sunflowers = Oil for Grain
Wheat = Spring for Grain
All fields are non-irrigated
Shares are 100% to operator

Common Land Unit

- Tract Boundary
- Non-Cropland
- Cropland
- PLSS

Wetland Determination Identifiers

- Restricted Use
- Limited Restrictions
- Exempt from Conservation Compliance Provisions



United States Department of Agriculture (USDA) Farm Service Agency (FSA) maps are for FSA Program administration only. This map does not represent a legal survey or reflect actual ownership; rather it depicts the information provided directly from the producer and/or National Agricultural Imagery Program (NAIP) imagery. The producer accepts the data 'as is' and assumes all risks associated with its use. USDA-FSA assumes no responsibility for actual or consequential damage incurred as a result of any user's reliance on this data outside FSA Programs. Wetland identifiers do not represent the size, shape, or specific determination of the area. Refer to your original determination (CPA-026 and attached maps) for exact boundaries and determinations or contact USDA Natural Resources Conservation Service (NRCS). **The imagery displayed on this map was collected in calendar year 2023.**



United States
Department of
Agriculture

Benson County, North Dakota

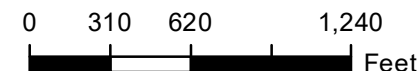
Farm 634

S27 T154N R68W

Phy Cnty: Benson

2024 Program Year

Map Created April 23, 2024



Unless Otherwise Noted:

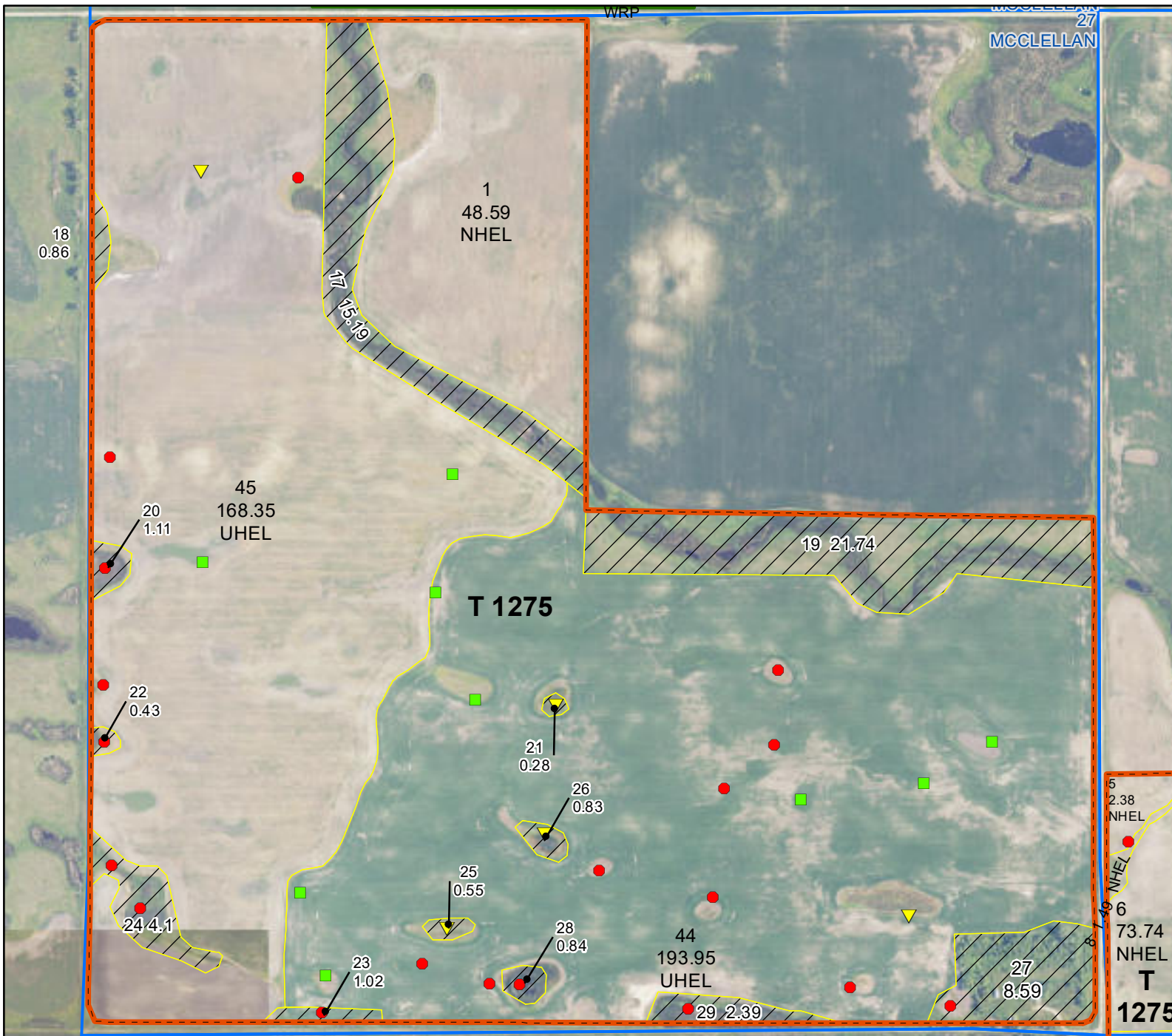
- Barley = Spring for Grain
- Canola = Spring for Processing
- Corn = Yellow for Grain
- Flax = Common for Grain
- Oats = Spring for Grain
- Soybeans = Common for Grain
- Sunflowers = Oil for Grain
- Wheat = Spring for Grain
- All fields are non-irrigated
- Shares are 100% to operator

Common Land Unit

- WRP
- Tract Boundary
- Non-Cropland
- Cropland
- PLSS

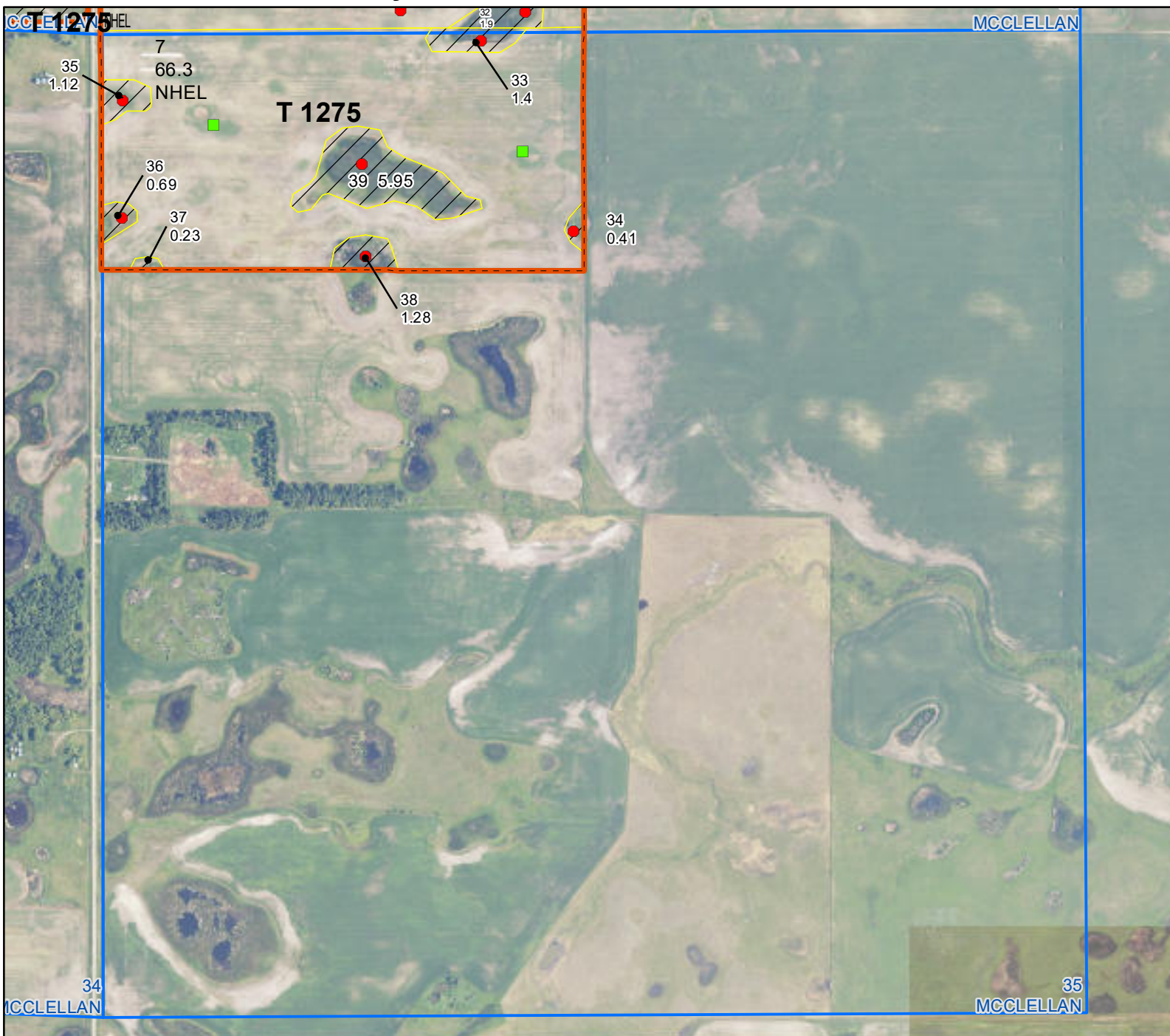
Wetland Determination Identifiers

- Restricted Use
- Limited Restrictions
- Exempt from Conservation Compliance Provisions



United States Department of Agriculture (USDA) Farm Service Agency (FSA) maps are for FSA Program administration only. This map does not represent a legal survey or reflect actual ownership; rather it depicts the information provided directly from the producer and/or National Agricultural Imagery Program (NAIP) imagery. The producer accepts the data 'as is' and assumes all risks associated with its use. USDA-FSA assumes no responsibility for actual or consequential damage incurred as a result of any user's reliance on this data outside FSA Programs. Wetland identifiers do not represent the size, shape, or specific determination of the area. Refer to your original determination (CPA-026 and attached maps) for exact boundaries and determinations or contact USDA Natural Resources Conservation Service (NRCS). **The imagery displayed on this map was collected in calendar year 2023.**

Benson County, North Dakota



Farm 634

S35 T154N R68W

Phy Cnty: Benson

2024 Program Year

Map Created April 23, 2024







A horizontal number line with tick marks at 0, 320, 640, and 1,280. The word "Feet" is written at the right end of the line. The segment between 320 and 640 is shaded gray.

Unless Otherwise Noted:

Barley = Spring for Grain
Canola = Spring for Processing
Corn = Yellow for Grain
Flax = Common for Grain
Oats = Spring for Grain
Soybeans = Common for Grain
Sunflowers = Oil for Grain
Wheat = Spring for Grain
All fields are non-irrigated
Shares are 100% to operator

Common Land Unit

-  Tract Boundary
 Non-Cropland
 Cropland
 PLSS

Wetland Determination Identifiers

- Restricted Use
- ▼ Limited Restrictions
- Exempt from Conservation Compliance Provisions

United States Department of Agriculture (USDA) Farm Service Agency (FSA) maps are for FSA Program administration only. This map does not represent a legal survey or reflect actual ownership; rather it depicts the information provided directly from the producer and/or National Agricultural Imagery Program (NAIP) imagery. The producer accepts the data 'as is' and assumes all risks associated with its use. USDA-FSA assumes no responsibility for actual or consequential damage incurred as a result of any user's reliance on this data outside FSA Programs. Wetland identifiers do not represent the size, shape, or specific determination of the area. Refer to your original determination (CPA-026 and attached maps) for exact boundaries and determinations or contact USDA Natural Resources Conservation Service (NRCS). **The imagery displayed on this map was collected in calendar year 2023.**