

67± ACRES
BENTON COUNTY, MS
\$299,000



SMALLTOWN
HUNTING PROPERTIES
& REAL ESTATE

OFFICE (662) 238-4077 | WWW.SMALLTOWNPROPERTIES.COM

THE BENTON 67

PROPERTY PROFILE

LOCATION:

- Pottery Road
Michigan City, MS 38647
- Benton County
- 1± Mile from US-72
- 40± Miles from Corinth
- 62± Miles from Memphis

COORDINATES:

- 34.97378, -89.16932

PROPERTY USE:

- Hunting
- Recreational
- Home/Cabin Site
- Timberland
- Investment

PROPERTY INFORMATION:

- 67± Acres
- Gated, Turn-Key
- Mature Hardwoods
- Plantation Pines
- Internal Trail System
- Deer & Turkey
- Established Food Plots
- Shooting Houses & Tree Stands
- 970± Feet of Road Frontage
- Pond
- Owner/Agent

TAX INFORMATION:

2023 - approximately \$776

- Parcel# 1-0690-26-000-001.00



SMALLTOWN
HUNTING PROPERTIES
& REAL ESTATESM

ANNAH BARNES

LAND & RESIDENTIAL SPECIALIST

C: 662-316-3971

O: 662-238-4077

annah@smalltownproperties.com

50 CR 401 - Oxford, MS 38655

smalltownproperties.com

Information is believed to be accurate but not guaranteed.

WELCOME TO THE BENTON 67

WELCOME TO THE BENTON 67, A HUNTER'S DREAM! Located in the widely known turkey haven of Benton County, MS, this gated, turnkey property is a must-see. After personally scouting and hunting this 67± acre tract a few times, it is obvious that this place is covered in mature deer. There is a perfect mixture of pine and fully mature hardwood, which is truly a rare find. Manicured trails run throughout the property, allowing total access. Multiple stands and shooting houses have been placed in strategic locations, along with food plots, and a pond offers plenty of food and water for wildlife. This property also offers plenty of road frontage with gorgeous building sites. The Benton 67 checks many boxes and should be considered strongly! Additional acreage is available.

Call Annah Barnes today to schedule a private tour!

OWNER/AGENT



SMALLTOWN
HUNTING PROPERTIES
& REAL ESTATESM

ANNAH BARNES

LAND & RESIDENTIAL SPECIALIST

C: 662-316-3971

O: 662-238-4077

annah@smalltownproperties.com

50 CR 401 - Oxford, MS 38655

smalltownproperties.com

Information is believed to be accurate but not guaranteed.

67± ACRES

BENTON COUNTY, MISSISSIPPI



SMALLTOWN
HUNTING PROPERTIES
& REAL ESTATESM

ANNAH BARNES

LAND & RESIDENTIAL SPECIALIST

C: 662-316-3971

O: 662-238-4077

annah@smalltownproperties.com

50 CR 401 - Oxford, MS 38655

smalltownproperties.com

Information is believed to be accurate but not guaranteed.

67± ACRES

BENTON COUNTY, MISSISSIPPI



SMALLTOWN
HUNTING PROPERTIES
& REAL ESTATESM

ANNAH BARNES

LAND & RESIDENTIAL SPECIALIST

C: 662-316-3971

O: 662-238-4077

annah@smalltownproperties.com

50 CR 401 - Oxford, MS 38655

smalltownproperties.com

Information is believed to be accurate but not guaranteed.

67± ACRES

BENTON COUNTY, MISSISSIPPI



SMALLTOWN
HUNTING PROPERTIES
& REAL ESTATESM

ANNAH BARNES

LAND & RESIDENTIAL SPECIALIST

C: 662-316-3971

O: 662-238-4077

annah@smalltownproperties.com

50 CR 401 - Oxford, MS 38655

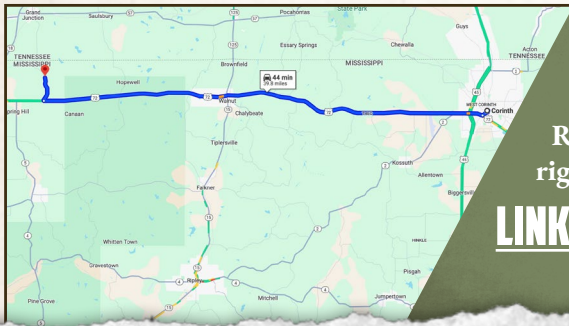
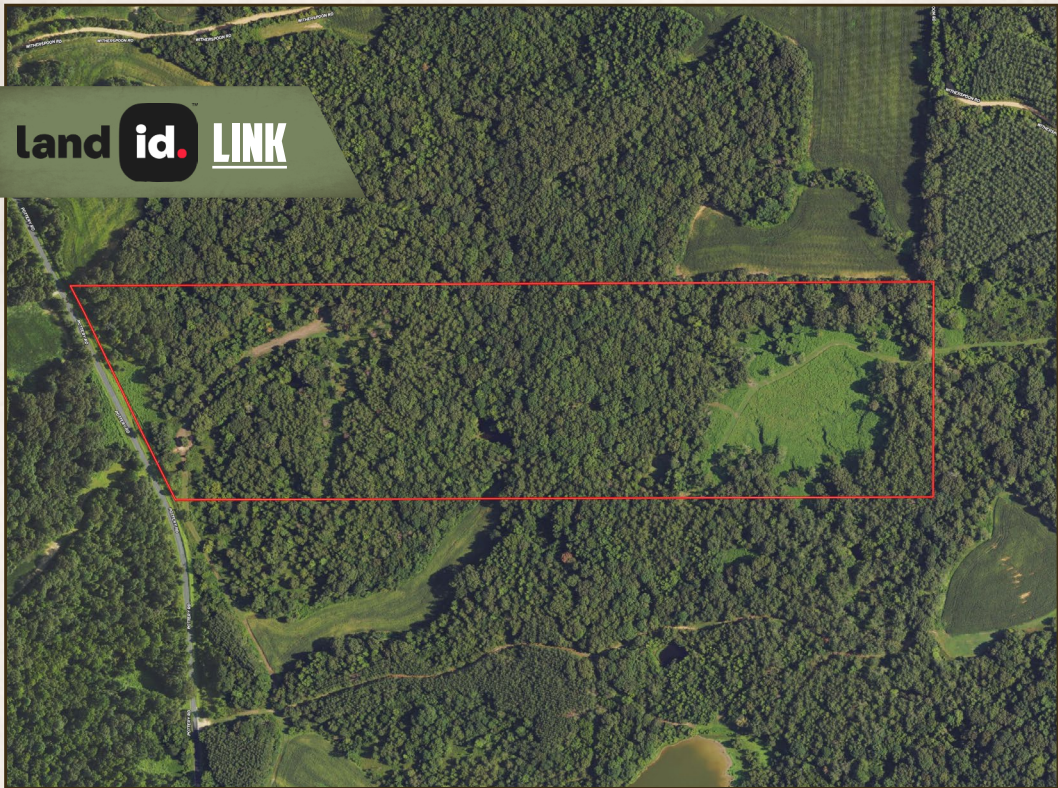
smalltownproperties.com

Information is believed to be accurate but not guaranteed.

67± ACRES

BENTON COUNTY, MISSISSIPPI

land id. LINK



Directions From US-72 W in Corinth, MS: Turn right on Pottery Road. The property will be on your right in 1.4 miles.

[LINK TO GOOGLE MAP DIRECTIONS](#)



SMALLTOWN
HUNTING PROPERTIES
& REAL ESTATESM

ANNAH BARNES
LAND & RESIDENTIAL SPECIALIST

C: 662-316-3971

O: 662-238-4077

annah@smalltownproperties.com

50 CR 401 - Oxford, MS 38655

smalltownproperties.com

Information is believed to be accurate but not guaranteed.