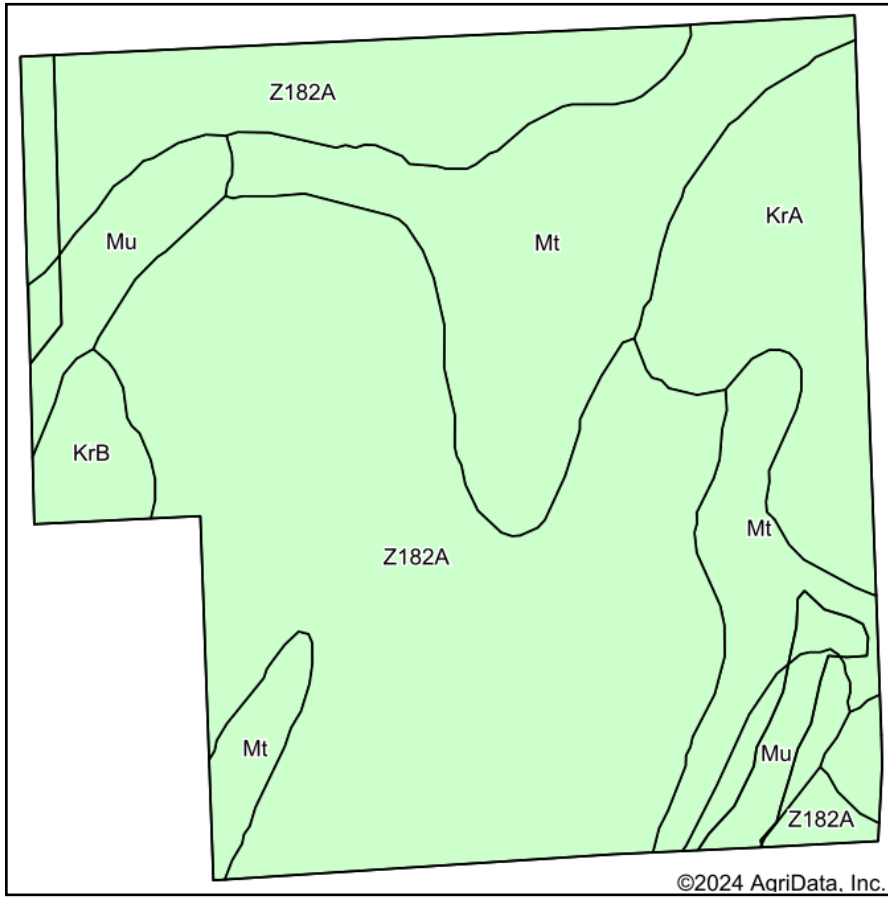
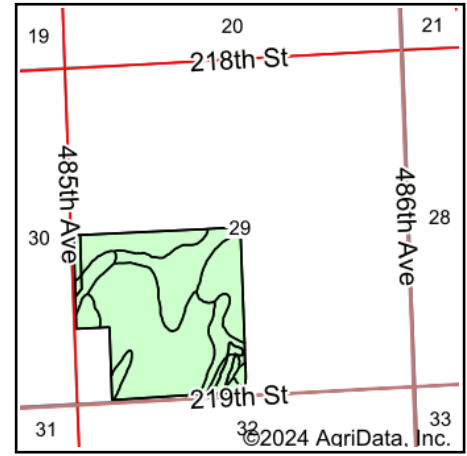


Soils Map



Soils data provided by USDA and NRCS.



State: **South Dakota**
 County: **Brookings**
 Location: **29-109N-47W**
 Township: **Elkton**
 Acres: **142.95**
 Date: **12/18/2024**

ADVANTAGE
Land Co.

Maps Provided By:

 CUSTOMIZED ONLINE MAPPING
 © AgriData, Inc. 2023 www.AgriDataInc.com



Area Symbol: SD011, Soil Area Version: 32

Code	Soil Description	Acres	Percent of field	Non-Irr Class *c	Productivity Index
Z182A	Estelline silt loam, coteau, 0 to 2 percent slopes	79.32	55.5%	Ils	66
Mt	Mckranz-Badger silty clay loams, 0 to 2 percent slopes	33.76	23.6%	Ils	79
KrA	Kranzburg-Brookings silty clay loams, 0 to 2 percent slopes	17.56	12.3%	Is	93
Mu	McIntosh-Lamoure silty clay loams, 0 to 2 percent slopes	8.85	6.2%	Ils	80
KrB	Kranzburg-Brookings silty clay loams, 1 to 6 percent slopes	3.46	2.4%	Ile	87
Weighted Average				1.88	73.8

*c: Using Capabilities Class Dominant Condition Aggregation Method