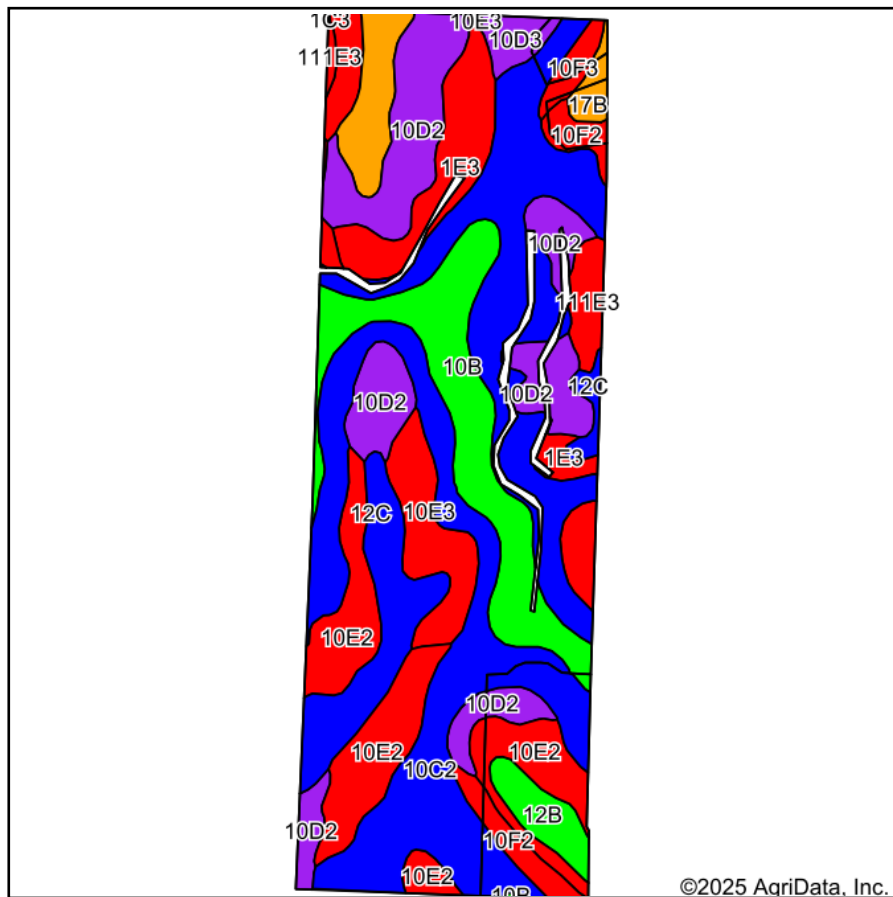
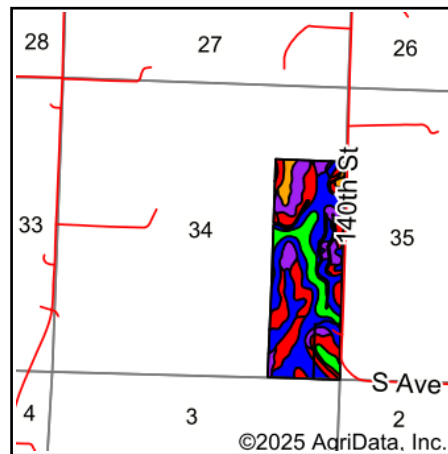


# Soils Map



Soils data provided by USDA and NRCS.



State: **Iowa**  
 County: **Crawford**  
 Location: **34-83N-41W**  
 Township: **Willow**  
 Acres: **113.28**  
 Date: **1/21/2025**



Maps Provided By:  
  
 CUSTOMIZED ONLINE MAPPING  
 © AgriData, Inc. 2023 www.AgriDataInc.com



Area Symbol: IA047, Soil Area Version: 38

Code	Soil Description	Acres	Percent of field	CSR2 Legend	Non-Irr Class *c	Irr Class *c	Range Production (lbs/acre/yr)	CSR2**	CSR	Alfalfa hay Tons	Caucasian bluestem Tons	Common bermudagrass Tons	Orchardgrass red clover Tons	Tall fescue Tons	Warm season grass Tons
10C2	Monona silt loam, 5 to 9 percent slopes, eroded	36.22	31.8%		IIIe		0	86	63						
10E2	Monona silt loam, 14 to 20 percent slopes, eroded	16.27	14.4%		IVe		0	45	43						
10D2	Monona silt loam, 9 to 14 percent slopes, eroded	15.94	14.1%		IIIe		0	60	53						
10B	Monona silt loam, 2 to 5 percent slopes	12.38	10.9%		Ile	IIIe	4000	95	80	7	8	7	7	7	
12C	Napier silt loam, 5 to 9 percent slopes	7.20	6.4%		IIIe		0	89	65						

Soils data provided by USDA and NRCS.

Code	Soil Description	Acres	Percent of field	CSR2 Legend	Non-Irr Class *c	Irr Class *c	Range Production (lbs/acre/yr)	CSR2**	CSR	Alfalfa hay Tons	Caucasian bluestem Tons	Common bermudagrass Tons	Orchardgrass red clover Tons	Tall fescue Tons	Warm season grass Tons
1E3	Ida silt loam, 14 to 20 percent slopes, severely eroded	6.15	5.4%		IVe		0	18	35						
10E3	Monona silt loam, 14 to 20 percent slopes, severely eroded	4.75	4.2%		IVe		0	38	40						
17B	Napier-Kennebec-Colo complex, 0 to 5 percent slopes	4.29	3.8%		IIw		0	80	57						
10F2	Monona silt loam, 20 to 30 percent slopes, eroded	2.85	2.5%		Vle		0	24	23						
12B	Napier silt loam, 2 to 5 percent slopes	2.36	2.1%		Ile		0	93	80						
111E3	Dow-Monona complex, 14 to 20 percent slopes, severely eroded	2.35	2.1%		IVe		0	22	36						
10D3	Monona silt loam, 9 to 14 percent slopes, severely eroded	1.42	1.3%		IIle		0	53	50						
10F3	Monona silt loam, 20 to 30 percent slopes, severely eroded	1.10	1.0%		Vle		0	14	20						
<b>Weighted Average</b>					<b>3.20</b>	<b>*-</b>	<b>437.1</b>	<b>67.8</b>	<b>56.2</b>	<b>0.8</b>	<b>0.9</b>	<b>0.8</b>	<b>0.8</b>	<b>0.8</b>	<b>0.8</b>

\*\*IA has updated the CSR values for each county to CSR2.

\*n: The aggregation method is "Weighted Average using all components"

\*c: Using Capabilities Class Dominant Condition Aggregation Method

\*- Irr Class weighted average cannot be calculated on the current soils data due to missing data.