

ULTIMATE SPORTSMAN'S RETREAT

160± Acres in Hinds County, MS



- Managed for Deer & Turkey
- Mature Hardwoods, Diverse Wildlife & Miles of Trails
- Two Stocked Lakes
- 3,544 SF 4Bed/4Bath Home with an Open Floor Plan
- Primary Suite with His-and-Hers Bathrooms & Private Outdoor Access
- Stunning Lake Views
- Outdoor Living Spaces & Kohler 38KW Generator
- 20± Acres of Pasture & Plenty of Equipment Storage
- 2,200-FT Private Airstrip with a Hangar
- Conveniently Located Near I-20 & the Natchez Trace

5405 Highway 467, Edwards, MS, 39066



DALE WILDS
REALTOR®

O: 601.898.2772 | C: 662.715.7109
Dale@TomSmithLand.com



DAVID BELDEN
ALC®, REALTOR®

O: 601.898.2772 | C: 601.415.3884
DBelden@TomSmithLand.com

TomSmithLandandHomes.com

Information is believed to be accurate but not guaranteed.





This 160± acre Central Mississippi estate is a sportsman's paradise, offering premier hunting, fishing, and luxury living. Managed for trophy whitetail deer and turkey, it features mature hardwoods, diverse wildlife, and miles of trails. Two stocked lakes (13± and 2± acres) provide exceptional fishing and waterfront enjoyment. The 3,544 sq. ft. home features four bedrooms, four bathrooms, an open floor plan, a gourmet kitchen, and a primary suite with his-and-hers bathrooms and private outdoor access. Expansive windows offer stunning lake views, while outdoor living spaces and a Kohler 38KW generator ensure comfort and security. Additional highlights include 20± acres of pasture, ample storage for equipment, and a 2,200-foot private airstrip with a hangar. This rare estate is conveniently located near I-20 and the Natchez Trace and is the ultimate retreat for outdoor enthusiasts. Call David Belden or Dale Wilds today!

DALE WILDS
REALTOR®

O: 601.898.2772 | C: 662.715.7109
Dale@TomSmithLand.com



DAVID BELDEN
ALC®, REALTOR®

O: 601.898.2772 | C: 601.415.3884
DBelden@TomSmithLand.com

TomSmithLandandHomes.com

Information is believed to be accurate but not guaranteed.





DALE WILDS
REALTOR®

O: 601.898.2772 | C: 662.715.7109
Dale@TomSmithLand.com



DAVID BELDEN
ALC®, REALTOR®

O: 601.898.2772 | C: 601.415.3884
DBelden@TomSmithLand.com

TomSmithLandandHomes.com

Information is believed to be accurate but not guaranteed.





DALE WILDS
REALTOR®

O: 601.898.2772 | C: 662.715.7109
Dale@TomSmithLand.com



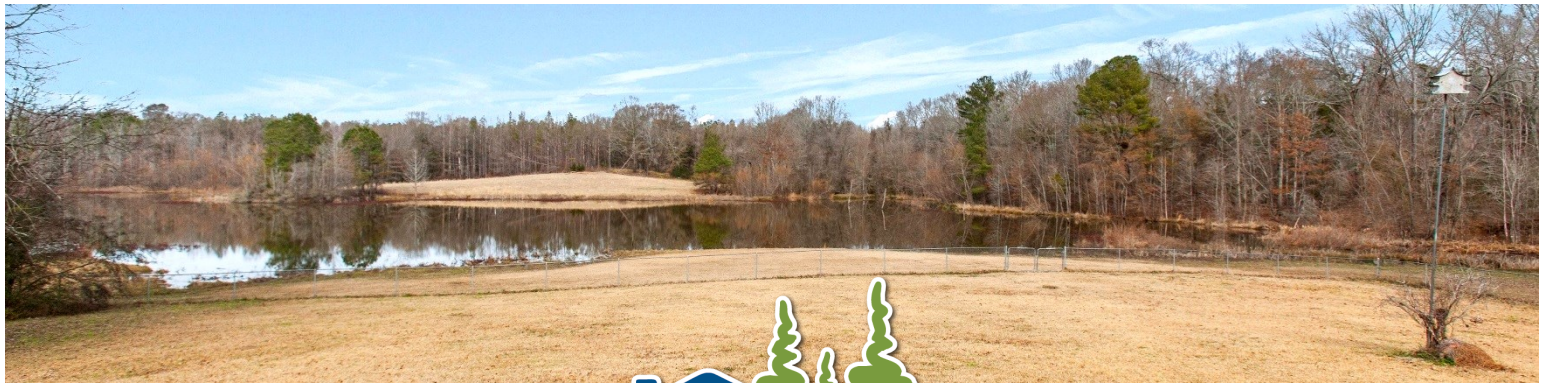
DAVID BELDEN
ALC®, REALTOR®

O: 601.898.2772 | C: 601.415.3884
DBelden@TomSmithLand.com

TomSmithLandandHomes.com

Information is believed to be accurate but not guaranteed.





DALE WILDS
REALTOR®

O: 601.898.2772 | C: 662.715.7109
Dale@TomSmithLand.com

DAVID BELDEN
ALC®, REALTOR®

O: 601.898.2772 | C: 601.415.3884
DBelden@TomSmithLand.com

TomSmithLandandHomes.com

Information is believed to be accurate but not guaranteed.



A photograph of a lake with a golf course in the background. The trees are in autumn colors, ranging from orange to brown. Several deer are visible on the golf course. The sky is overcast.

DALE WILDS
REALTOR®
O: 601.898.2772 | C: 662.715.7109
Dale@TomSmithLand.com

Tom Smith LAND AND HOMES
Expect More. Get More.

DAVID BELDEN
ALC®, REALTOR®
O: 601.898.2772 | C: 601.415.3884
DBelden@TomSmithLand.com

TomSmithLandandHomes.com

Information is believed to be accurate but not guaranteed.

2011-2024
BEST
BROKER AGENCY



DALE WILDS
REALTOR®

O: 601.898.2772 | C: 662.715.7109
Dale@TomSmithLand.com



DAVID BELDEN
ALC®, REALTOR®

O: 601.898.2772 | C: 601.415.3884
DBelden@TomSmithLand.com

TomSmithLandandHomes.com

Information is believed to be accurate but not guaranteed.





DALE WILDS
REALTOR®

O: 601.898.2772 | C: 662.715.7109
Dale@TomSmithLand.com



DAVID BELDEN
ALC®, REALTOR®

O: 601.898.2772 | C: 601.415.3884
DBelden@TomSmithLand.com

TomSmithLandandHomes.com

Information is believed to be accurate but not guaranteed.





DALE WILDS
REALTOR®

O: 601.898.2772 | C: 662.715.7109
Dale@TomSmithLand.com



DAVID BELDEN
ALC®, REALTOR®

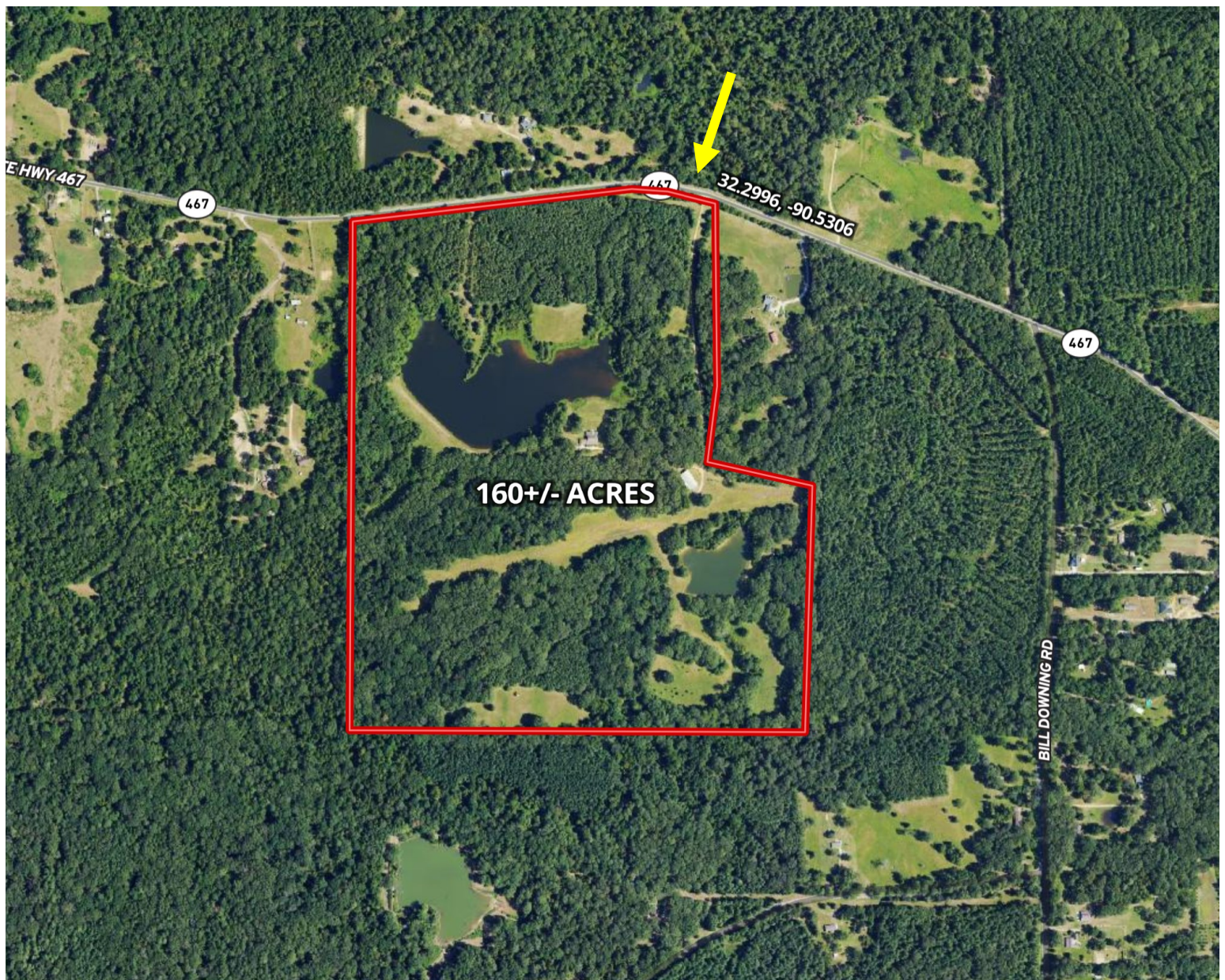
O: 601.898.2772 | C: 601.415.3884
DBelden@TomSmithLand.com

TomSmithLandandHomes.com

Information is believed to be accurate but not guaranteed.



AERIAL MAP



[CLICK HERE FOR THE LANDID INTERACTIVE MAP](#)



DALE WILDS
REALTOR®

O: 601.898.2772 | C: 662.715.7109
Dale@TomSmithLand.com

DAVID BELDEN
ALC®, REALTOR®

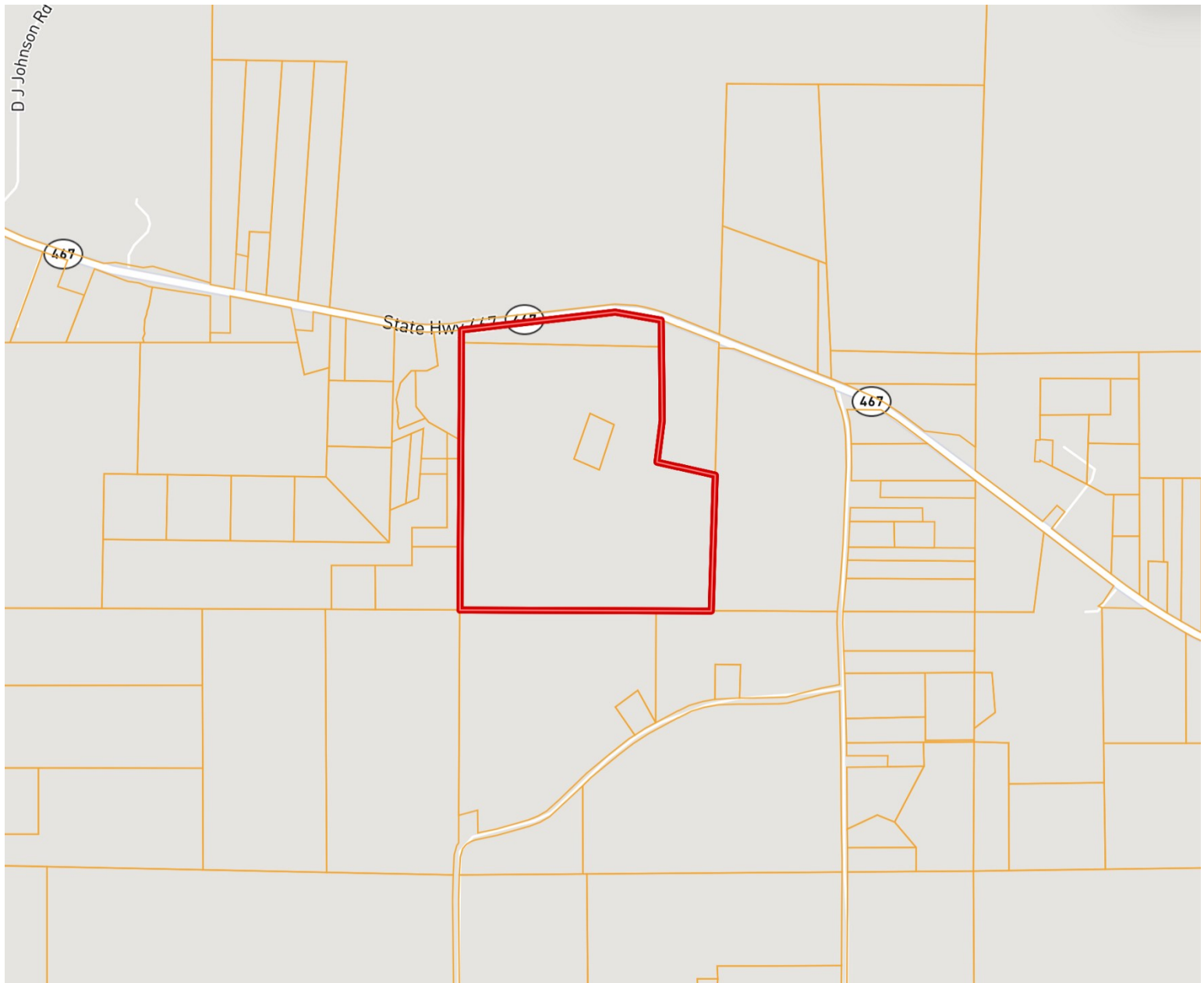
O: 601.898.2772 | C: 601.415.3884
DBelden@TomSmithLand.com

TomSmithLandandHomes.com

Information is believed to be accurate but not guaranteed.



OWNERSHIP MAP



DALE WILDS
REALTOR®

O: 601.898.2772 | C: 662.715.7109
Dale@TomSmithLand.com



DAVID BELDEN
ALC®, REALTOR®

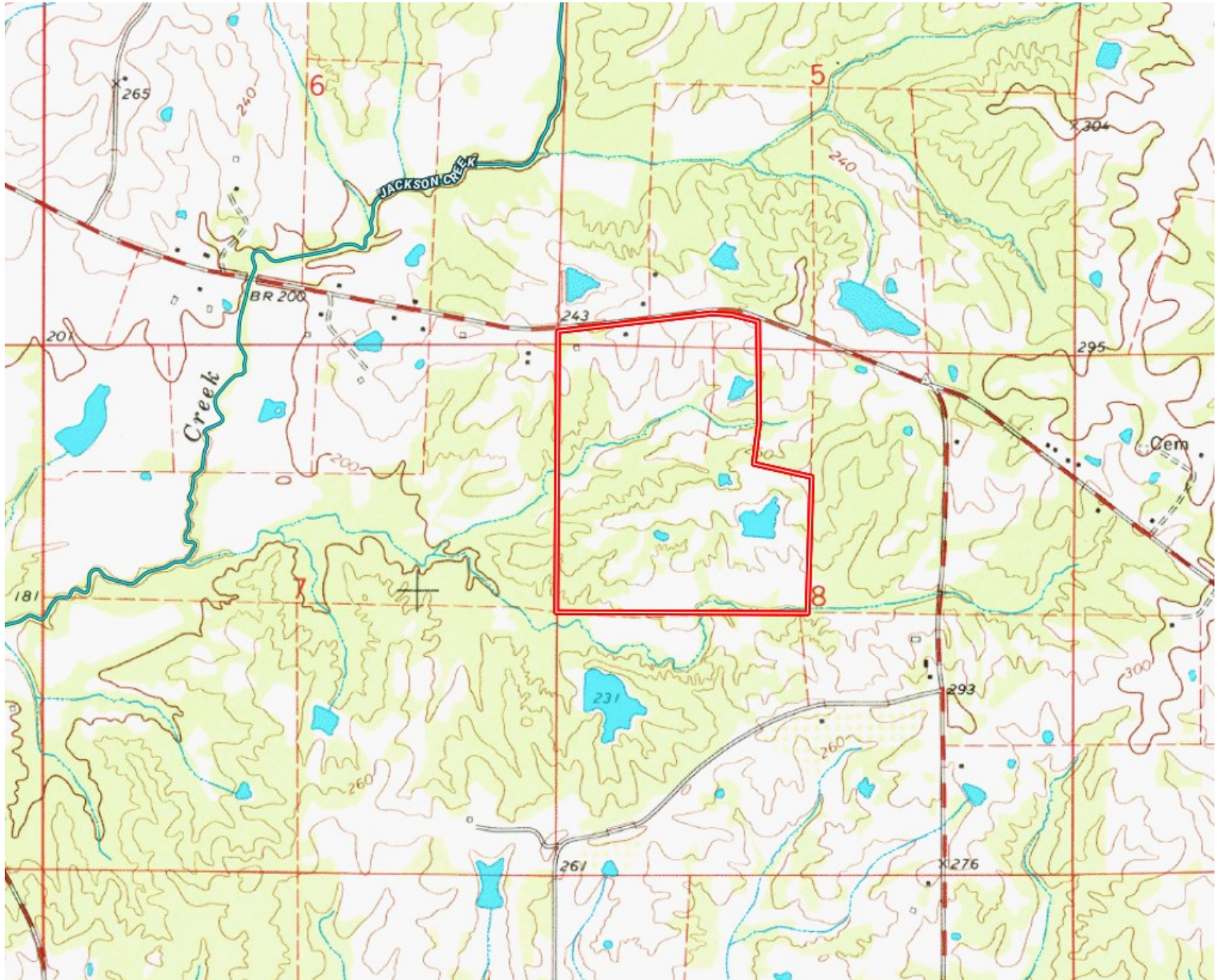
O: 601.898.2772 | C: 601.415.3884
DBelden@TomSmithLand.com

TomSmithLandandHomes.com

Information is believed to be accurate but not guaranteed.



TOPO MAP



DALE WILDS
REALTOR®

O: 601.898.2772 | C: 662.715.7109
Dale@TomSmithLand.com



DAVID BELDEN
ALC®, REALTOR®

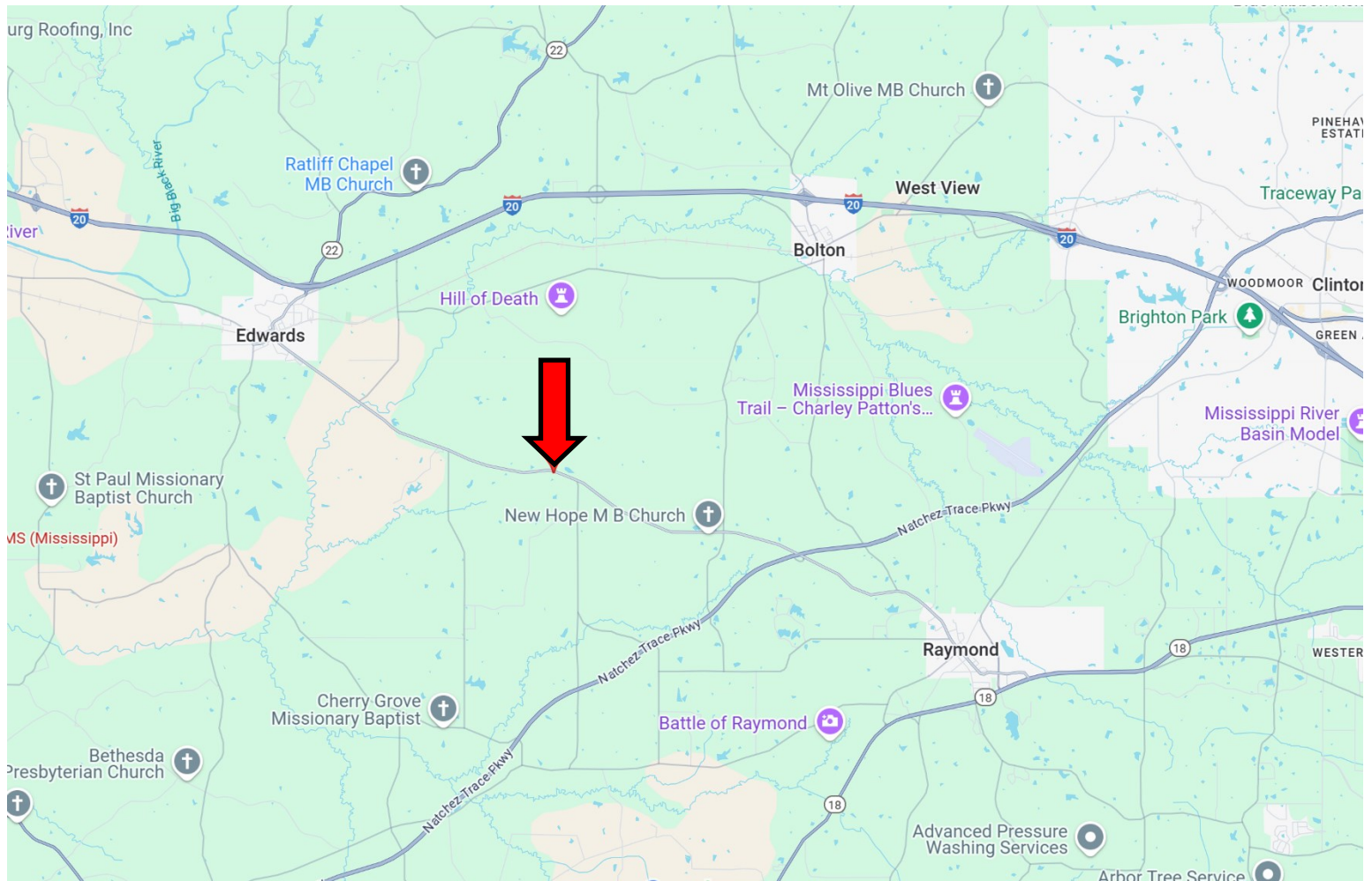
O: 601.898.2772 | C: 601.415.3884
DBelden@TomSmithLand.com

TomSmithLandandHomes.com

Information is believed to be accurate but not guaranteed.



DIRECTIONAL MAP



Directions from the intersection of Hwy 18 and Hwy 467 in Raymond, MS: Turn right onto County Farm Road and travel 0.1 mile. Continue onto Main Street and travel 1.9 miles. Continue onto Hwy 467 for 6.5 miles. The gated entrance will be on your left.

5405 Highway 467, Edwards, MS, 39066 - Click for Google Map Link



DALE WILDS
REALTOR®

O: 601.898.2772 | C: 662.715.7109
Dale@TomSmithLand.com



DAVID BELDEN
ALC®, REALTOR®

O: 601.898.2772 | C: 601.415.3884
DBelden@TomSmithLand.com

TomSmithLandandHomes.com

Information is believed to be accurate but not guaranteed.

